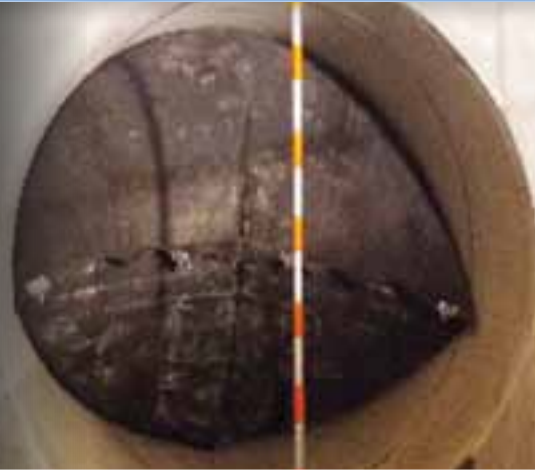




GEKA

The unique construction and high-quality materials of Savatech pillow-shaped PLUGY PILLOW and PLUGSY PILLOW plugs ensure low weight and high flexibility during use and storage. Plugs of this type are suitable for the largest pipelines and can be custom-made to fit any pipeline diameter.



Flexible and fully foldable

Small insertion diameter required

Fit through a 600 mm manhole

Custom-made dimensions available



Deflated Pillow



Folded Pillow



PLUGY PILLOW 600-1000
529411

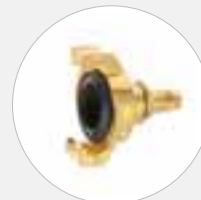
ACCESSORIES



DOUBLE FITTING CONTROLLER, 2.0 KG
504061



INFLATION HOSE 10 M WITH SAFETY GEKA COUPLING, 3.0 KG
519817



ADAPTER GEKA/26, 0.2 KG
575711

PILLOW-SHAPED PLUGS – PLUGGY PILLOW AND PLUGSY PILLOW

1. 11.

PLUGGY PILOW - BLOCKING PLUGS

PART NUMBER	NOMINAL SIZE	SIZE USAGE RANGE		REQUIRED INFLATION PRESSURE (BAR)	MAX. ALLOWABLE BACK PRESSURE		DEFLATED PLUG			PRODUCT WEIGHT (KG)	SHACKLE M THREAD	INFLATION VALVE THREAD SIZE
		MIN. DIA. (MM)	MAX. DIA. (MM)		WATER HEAD (BAR)	WATER HEAD (M)	DIAMETER (MM)	WIDTH (MM)	LENGTH (MM)			
529411	600-1000	600	1000	1	0.7	7	580	910	2100	18	12 x 2	2 x R1/2"
529412	800-1200	800	1200	0.9	0.6	6	780	1230	2500	29	12 x 2	2 x R1/2"
529413	1200-1600	1200	1600	0.8	0.5	5	1170	1830	3200	51	12 x 3	2 x R1/2"
529414	1600-2000	1600	2000	0.6	0.4	4	1560	2450	4000	86	12 x 3	2 x R1/2"
529491	1900-2200	1900	2200	0.5	0.3	3	1850	2910	4800	100	12 x 4	2 x R1/2"
545429	2400-2500	2400	2500	0.5	0.3	3	2350	3690	5600	222	12 x 6	2 x R1/2"
545430	2600-2700	2600	2700	0.4	0.2	2	2550	4000	6500	288	12 x 6	2 x R1/2"
545431	2800-2900	2800	2900	0.3	0.1	1	2740	4300	7000	332	12 x 6	2 x R1/2"
545432	3000	3000	3000	0.3	0.1	1	2930	4600	7500	377	12 x 6	2 x R1/2"

PLUGSY PILOW - BYPASS PLUGS

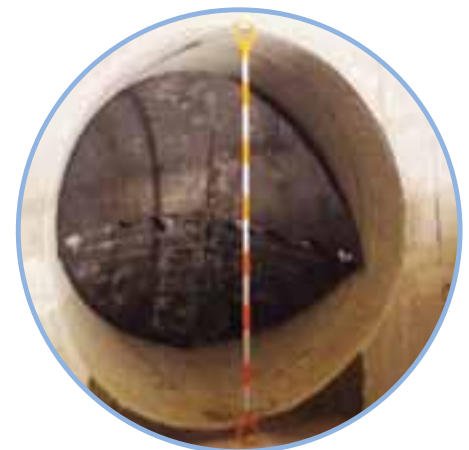
PART NUMBER	NOMINAL SIZE	SIZE USAGE RANGE		REQUIRED INFLATION PRESSURE (BAR)	MAX. ALLOWABLE BACK PRESSURE		DEFLATED PLUG			PRODUCT WEIGHT (KG)	SHACKLE M THREAD	INFLATION VALVE THREAD SIZE	BYPASS DIAMETER (FEMALE)
		MIN. DIA. (MM)	MAX. DIA. (MM)		WATER HEAD (BAR)	WATER HEAD (M)	DIAMETER (MM)	WIDTH (MM)	LENGTH (MM)				
529415	600-1000	600	1000	1	0.7	7	580	910	2100	23	12 x 2	2 x R1/2"	2"
529416	800-1200	800	1200	0.9	0.6	6	780	1230	2500	34	12 x 2	2 x R1/2"	2"
529417	1200-1600	1200	1600	0.8	0.5	5	1170	1830	3200	57	12 x 3	2 x R1/2"	2"
529418	1600-2000	1600	2000	0.6	0.4	4	1560	2450	4000	92	12 x 3	2 x R1/2"	2"
529492	1900-2200	1900	2200	0.5	0.3	3	1850	2910	4800	100	12 x 4	2 x R1/2"	2"
545433	2400-2500	2400	2500	0.5	0.3	3	2350	3690	5600	234	12 x 6	2 x R1/2"	2"
545434	2600-2700	2600	2700	0.4	0.2	2	2550	4000	6500	301	12 x 6	2 x R1/2"	2"
545435	2800-2900	2800	2900	0.3	0.1	1	2740	4300	7000	346	12 x 6	2 x R1/2"	2"
545436	3000	3000	3000	0.3	0.1	1	2930	4600	7500	392	12 x 6	2 x R1/2"	2"



Inserting a folded pillow plug



Placing – pillow plug should be positioned horizontally



Inflated pillow plug