

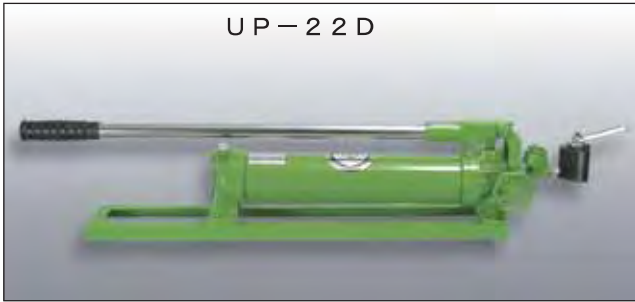
Description of the type

UP - 2 1 M

- M : For single-acting cylinder (Port M14 x 1.5)
- B : For single-acting cylinder * UP-22 type only (Port M22 x 1.5)
- D : For double-acting cylinder (Port M14 x 1.5)

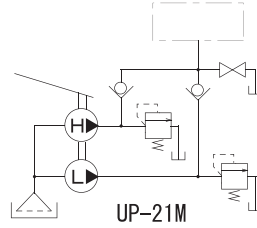
Series No : 2 1
: 2 2

200 MPa manual pump



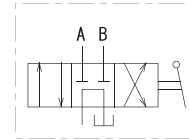
Standard hydraulic circuit diagram

W/O attached operating valve

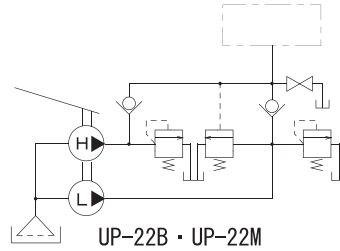


UP-21M

Attached operating valve
SMVT-2K-4



W/O attached operating valve

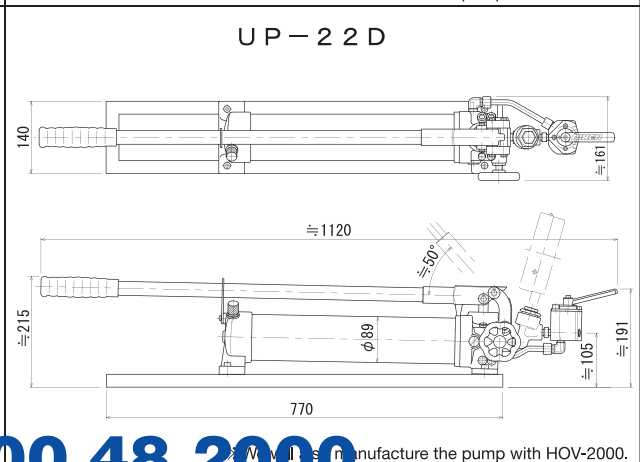
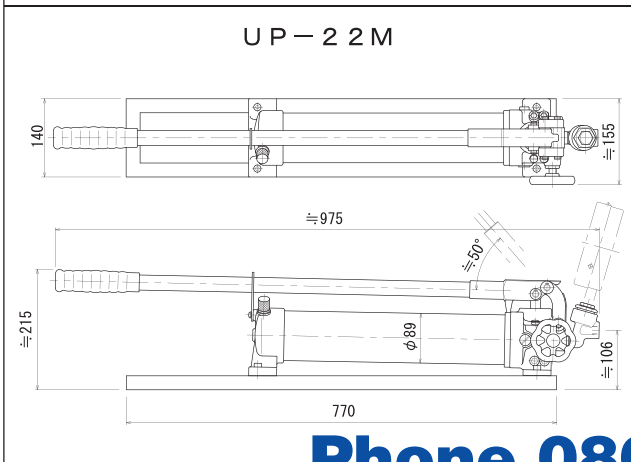
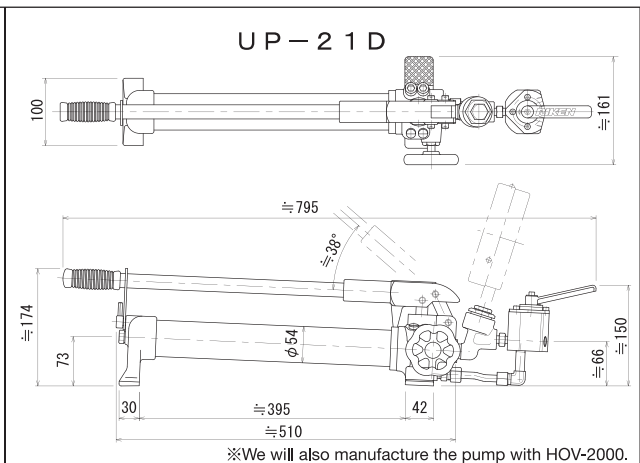
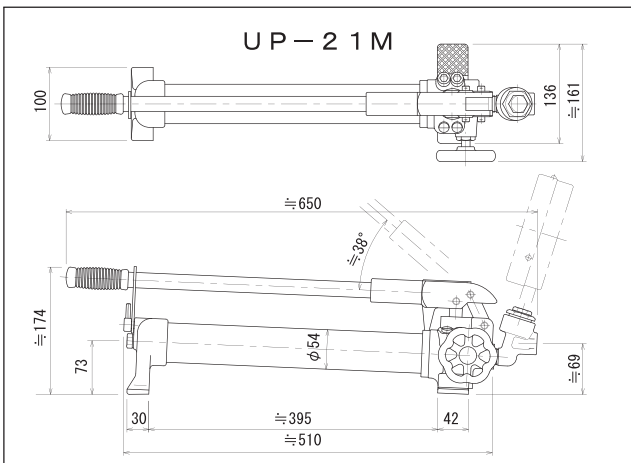


UP-21D · UP-22M

UP-21D
UP-22D

Specification

Type	Maximum operating pressure (MPa)		Discharge volume (cm ³ /stroke)		Port	Tank oil level (cm ³)	Effective oil level (cm ³)	Lever load (kg)	Approximate weight (kg)
	High pressure	Low pressure	At high pressure	At low pressure					
UP-21M	200	2	0.75	9.75	M14 x 1.5	700	600	52.0	8.2
UP-21D									9.8
UP-22B		3	1.6	31.0	M22 x 1.5	2100	1800	64.0	18.6
UP-22M					18.6				
UP-22D					20.2				



200MPa

Phone 0800 48 2000

SALES • SERVICE • HIRE • CALIBRATION