

## WHAT'S NEW IN HIRE? PIPE JOINT TESTER

Fast, safe and easy to use, a five-second test determines joint integrity. HTC's new Joint Tester is designed to test large-diameter, installed, pre-cast concrete 1800mm pipe.



Ready to test with water or air straight, no modifications are needed, the Air-Loc® Joint Tester also allows you to pre-test before backfilling. Capable of testing to 15 PSI air or 50 psi water.

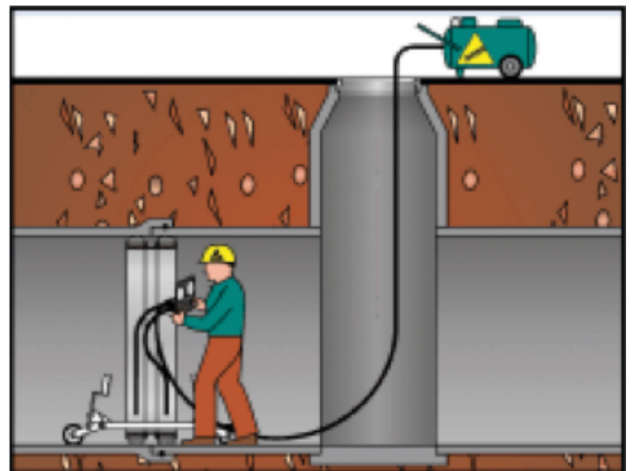


TESTS UP TO  
1800mm PIPE JOINTS



### FEATURES:

- Sleeveless, lightweight aluminum design allows for easy assembly in manholes
- Independent, adjustable wheels—easy to move
- Quick-connect control panel is simple to install and remove, plus the top-mounting feature won't interfere with laser usage



PIPE JOINT TESTER

Normal hire conditions apply