



Inventor of Roller Skates

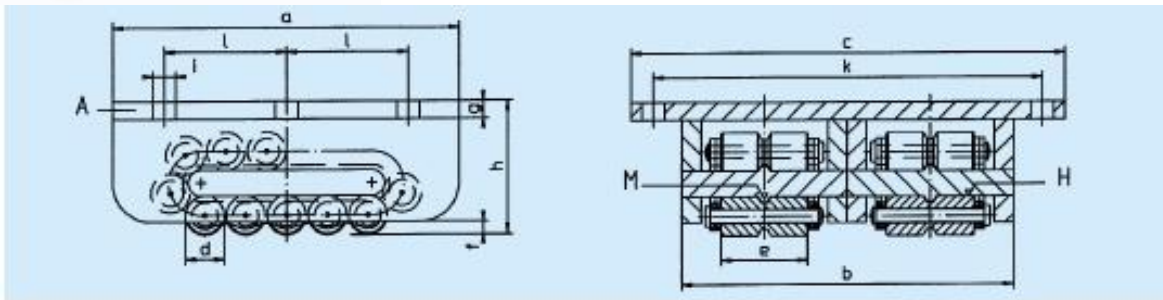
ROLLER SKATE EXPRESS - THE SUPER ROBUSTS

MOD. ZAM-H / ZAS-H



Range of application:

- For longer distances and repeat journeys with permanent loads.
- On suitable tracks like crane rails or steel beams.
- For extreme load bearing points.
- Suitable for limited space.
- Often used for bridge construction or for mobile equipment to support hydraulic valves.
- Use as a conveyor, when the load is moving and the Roller Skates are fixed.
- Triple Roller Skates or Multiple Roller Skates on request.



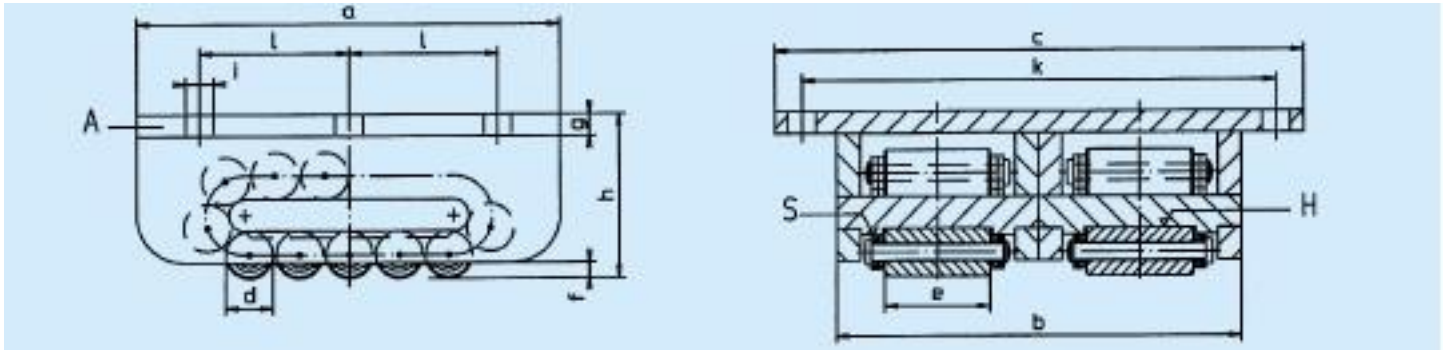
MOD. ZAM-H (H = HARDENED AND MACHINED CENTRE PLATE) ZAM-H-50CRV4 (ROLLER MATERIAL 50CRV4)

MOD.	A	B	C	Ø D	E	F	G	H	Ø I	K	L	ROLLERS UNDER STRESS	NUMBER OF ROLLERS	MAX. LOAD kN	WEIGHT KG
I	210	200	280	18	51	6	13	76	14	245	75	2x5	2x15	250	16,0
II	220	226	305	24	60	10	14	87	14	270	80	2x4	2x13	340	22,0
III	270	260	340	30	68	10	14	104	18	305	95	2x4	2x13	660	35,0
IIIv	320	280	360	30	68	10	18	115	18	325	120	2x6	2x17	840	55,5
IV	380	336	440	42	76	19	19	145	22	390	150	2x4	2x13	1060	92,5
V	530	364	480	50	86	19	19	165	22	430	210	2x6	2x17	1380	168,0
VL	580	364	480	50	86	19	23	170	22	430	250	2x8	2x21	1760	197,0
Vv	650	410	560	50	100	20	28	190	26	490	240	2x9	2x23	2500	294,0
VI	900	410	590	50	100	20	38	200	33	500	360	2x13	2x31	3300	432,0



Inventor of Roller Skates

ROLLER SKATE EXPRESS - THE SUPER ROBUSTS



**MOD. ZAS, H (H = H = HARDENED AND MACHINED CENTRE PLATE)
ZAS-H-50CRV4 (ROLLER MATERIAL 50CRV4)**

MOD.	A	B	C	Ø D	E	F	G	H	Ø I	K	L	ROLLERS UNDER STRESS	NUMBER OF ROLLERS	MAX. LOAD kN	WEIGHT KG
III	270	260	340	30	68	10	14	104	18	305	95	2x4	2x13	800	36.0
IIIv	320	280	360	30	68	10	18	115	18	325	120	2x6	2x17	1000	57.5
IV	380	336	440	42	76	19	19	145	22	390	150	2x4	2x13	1300	96.0
V	530	364	480	50	86	19	19	165	22	430	210	2x6	2x17	1700	175.0
VL	580	364	480	50	86	19	23	170	26	430	250	2x8	2x21	2000	207.0
Vv	650	410	560	50	100	20	28	190	26	490	240	2x9	2x23	3000	305.0
VI	900	410	590	50	100	20	38	200	33	500	360	2x13	2x31	4000	485.0