



"Makin' the Hard Jobs Easy"

# PERIMETER WIRE MACHINES

**600MH**  
BY PORTABLE WINCH



## 2020 MODELS

NEW FEATURES

**VIBRATION DAMPING HANDLE**

- Improved operator comfort
- Vibration levels reduced by 40%



**600MH**  
POWERED BY HONDA



**600MH-LI**  
80V 82 VOLT LITHIUM  
82V MAX

**AG TIRES**

- Improved traction in wet and slippery conditions
- No dirt build-up in muddy terrain conditions





"Makin' the Hard Jobs Easy"

# PERIMETER WIRE MACHINES



The 600MH Perimeter Wire Machine has been designed by professionals to optimize the work of robotic mower installers. The revolutionary design of the 600MH provides for high productivity and therefore, profitability.

#### Ease of Use and Transport

The 600MH is equipped with a self-propelled transmission and new chevron (Ag) tires, improving traction in wet and muddy conditions. Compact and lightweight, it is easy to transport from one installation site to another by a single person and can be folded to fit in the trunk of a small car.

#### High Productivity

The 600MH can bury more than 600 meters of wire per hour!

#### Versatile

It can install wire from all robot manufacturers with the configurable wire reel support. Wire reels containing up to 800m of wire will fit the customisable wire management system, which includes a variety of centering spacers and friction damper to ensure trouble-free wire dispensing. Optional accessories are available to accommodate centerless coils and larger reels of up to 1000M.

#### Rugged

The heavy duty solid carbide blade cutting surface slices through all types of soil, whether stony, compacted or normal. The optimal shape of the wire guide will deposit the wire behind at a depth of 4 to 6 cm.

#### Minimal Ground Damage

The sliding foot reduces accumulation of debris around the blade and prevents tearing of grass, leaving only a tiny scar on the surface that will disappear quickly.

#### Precision Install

The machine's small turning radius gives access to every corner! This means precise wire installation, and a perfect cutting job for the robot. The pivoting allows the wire to be easily installed under hedges, shrubs and low branches.

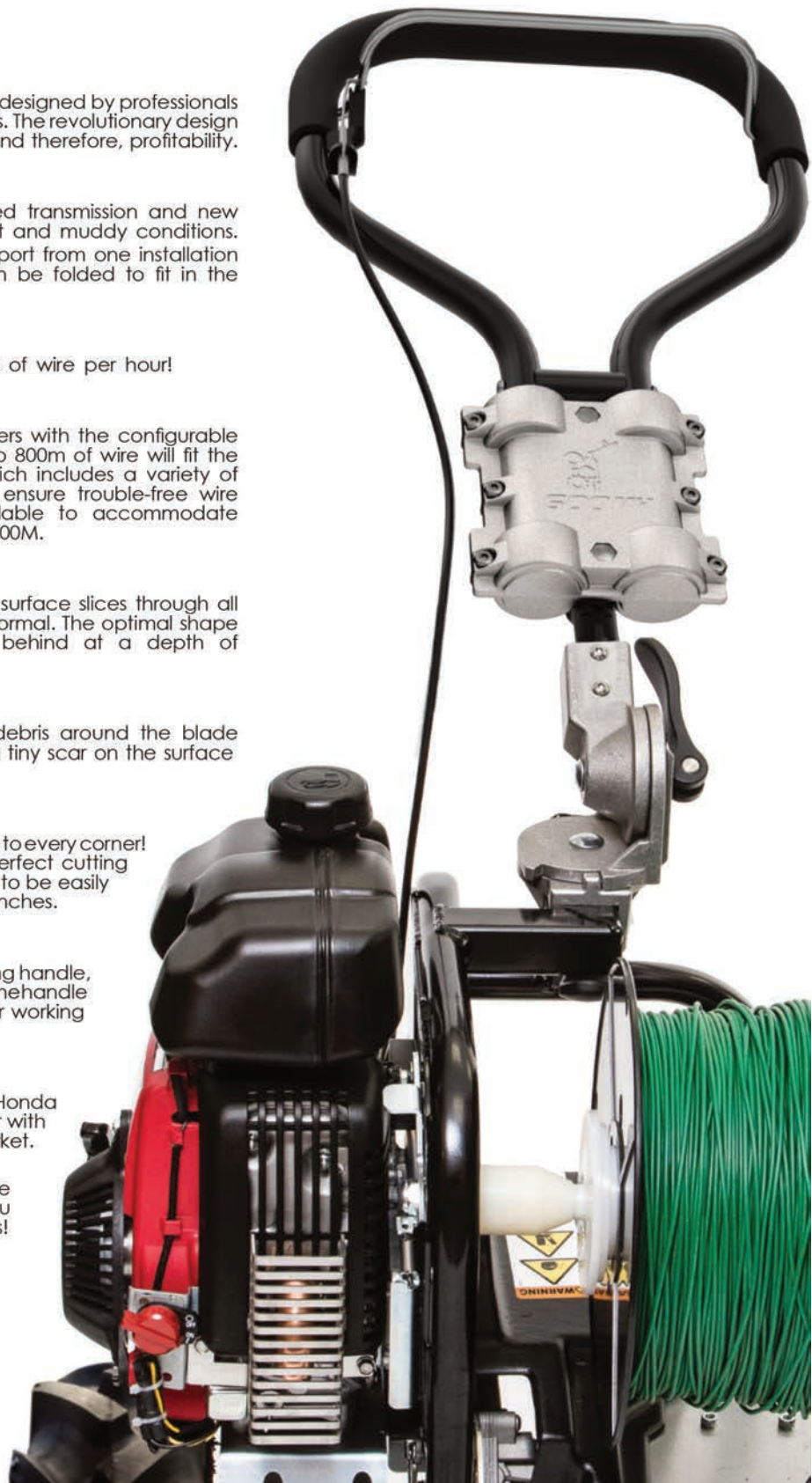
#### Ergonomy

New in 2020 is the ergonomic vibration damping handle, which significantly improves operator comfort. The handle can be adjusted to provide optimal operator working position.

#### Power Sources

You can choose from dependable 4-stroke Honda GXH50 engine or electric brushless 1kW motor with the largest Li-Ion battery capacity on the market.

The 2020 600MH and 600MH-Li Perimeter Wire Machines: the most efficient cable layers you can find on the market. The choice is yours!





"Makin' the Hard Jobs Easy"

# PERIMETER WIRE MACHINES



## FEATURES AND BENEFITS

### SLIDING FOOT

- Facilitates insertion of the blade
- Prevents grass damage
- Reduces debris on the blade and its axis

### HEAVY DUTY SOLID CARBIDE BLADE

- For all soil types
- Offset by 15 cm from the outside of the tire
- Long-lasting

### WIRE GUIDE

- For wire up to 6 mm (1/4") diameter
- Optimal shape
- Sturdy

### SELF-PROPELLED TRANSMISSION

- Improves productivity
- Decreases operator effort
- Integrated control in the handle

### STEEL FRAME

- Robust
- Easy maintenance
- High-resistance paint



"Makin' the Hard Jobs Easy"

# PERIMETER WIRE MACHINES

## 2020 MODELS

### EDGE DISTANCE GUIDE

- Can be installed on the front or the rear
- Adjustable from 6" to 17-3/4"
- Allows meeting all robot manufacturer's specifications



### KICKSTAND

- Retractable
- Allows blade ground clearance on start-up

### MULTI-POSITION ANTI-VIBRATION HANDLE

- Vibration levels reduced by 40%
- Improved operator comfort
- Ergonomic
- Pivots 30° to the right
- Tilts 180° front to back
- Facilitates operation in tight spaces



### WIRE REEL BRACKET

- Allows the use of most wire reels (up to 800 m)
- Many possible configurations
- Optional bracket is available for use with 1000 m spool



### AG TIRES

- Improved traction in wet and slippery conditions
- No dirt build-up in muddy terrain conditions





*"Makin' the Hard Jobs Easy"*

# **PERIMETER WIRE MACHINES**



[www.htc.co.nz](http://www.htc.co.nz)  
email: [info@htc.co.nz](mailto:info@htc.co.nz)

**SALES • SERVICE • CALIBRATION • HIRE**

**0800 48 2000**



"Makin' the Hard Jobs Easy"

# PERIMETER WIRE MACHINES

## 600MH

## GAS-POWERED PERIMETER WIRE MACHINE

POWERED by **HONDA**



**SPEED**  
15 m / min (50' / min)



**WEIGHT**  
83 lb



**WIRE DIAMETER**  
Up to 6 mm (1/4")



**WIRE DEPTH**  
4 to 6 cm (1-5/8" to 2-3/8")



**BLADE**  
Heavy duty solid carbide blade for all soil types



**MOTOR**  
Honda GXH 50, 4 stroke, 2.1 HP

**Motor:** Honda GXH 50, 4-stroke, 2.1 HP

**Autonomy:** Up to 600 m (1970') of wire with a full tank

**Wire Reel Bracket:**

Allows the use of most wire reels (up to 800 m (2625'))

Many possible configurations

**Weight (dry):** 83 lb

**Overall Dimensions:** 22" x 18" x 49"

**Frame:** Powder Coated Steel

**Multi-Position Anti-Vibration Handle:**

Vibration levels reduced by 40%  
Improved operators comfort  
Ergonomic  
Pivots 30° to the right  
Tilts 180°, front to back  
Facilitates operation in tight spaces

**Transmission:**  
Self-propelled

**Included:**  
1 heavy duty solid carbide blade

**Warranty:**  
Commercial Use : 1 year  
Engine : Honda International Warranty

**Certification:**  
CE



*"Makin' the Hard Jobs Easy"*

# PERIMETER WIRE MACHINES



[www.htc.co.nz](http://www.htc.co.nz)  
email: [info@htc.co.nz](mailto:info@htc.co.nz)

SALES • SERVICE • CALIBRATION • HIRE

0800 48 2000



"Makin' the Hard Jobs Easy"

# PERIMETER WIRE MACHINES

## 600MH-Li

\*Battery and charger not included



### SPEED

Speed 1: 15 m/min (50'/min)  
Speed 2: 19 m/min (62'/min)  
Speed 3: 22 m/min (72'/min)



### WEIGHT

83 lb



### WIRE DIAMETER

Up to 1/4" (6 mm)



### INCLINE

For slopes up to 70% incline



### WIRE DEPTH

4 to 6 cm (1-5/8" to 2-3/8")



### BLADE

Heavy duty solid carbide blade for all soil types



### MOTOR

1.0 kW brushless electric motor for Lithium-Ion batteries 80/82V.

**Motor:** 1.0kW brushless electric motor for Lithium-Ion batteries 80/82V.

**Autonomy:** Up to 600 m (1970') of wire with two 5Ah batteries\*

#### Wire Reel Bracket:

Allows the use of most wire reels (up to 800 m (2625'))

Many possible configurations

**Weight :** 83 lb

**Overall Dimensions :** 22" x 18" x 49"

**Frame:** Powder Coated Steel

#### Multi-Position Anti-Vibration Handle:

Vibration levels reduced by 40%  
Improved operators comfort  
Ergonomic  
Pivots 30° to the right  
Tilts 180°, front to back  
Facilitates operation in tight spaces

## BATTERY-POWERED PERIMETER WIRE MACHINE

**80/82 VOLT LITHIUM**  
82V MAX



#### Transmission:

Self-propelled

#### Included:

1 heavy duty solid carbide blade

#### Warranty:

Commercial Use : 1 year

#### Certification:



#### \*Compatible Batteries:

See next page for a list of compatible batteries.





*"Makin' the Hard Jobs Easy"*

# PERIMETER WIRE MACHINES



[www.htc.co.nz](http://www.htc.co.nz)  
email: [info@htc.co.nz](mailto:info@htc.co.nz)

SALES • SERVICE • CALIBRATION • HIRE

0800 48 2000



"Makin' the Hard Jobs Easy"

# PERIMETER WIRE MACHINES

## 600MH-Li LITHIUM-ION BATTERIES AND CHARGERS

### LITHIUM-ION BATTERIES AND CHARGERS

Lithium-Ion batteries are considered as one of the greatest innovation in nearly 20 years!

Indeed, these batteries offer several benefits:

**COMPATIBLE:** With other battery-powered tools such as Portable Winch PCW3000-Li, chainsaws, hedge trimmers, lawn mowers, leaf blowers, etc.

**RECHARGEABLE:** Can be recharged to full capacity at any moment of the discharge cycle without damaging the cells.

**SIMPLE:** Features a charge gauge that shows the remaining available working time before or during work.

**PROFESSIONAL PERFORMANCE :** With their extremely high efficiency, these batteries provide ample power to run powerful tools for a long time. Moreover, they have a very low self-discharge rate when not being used, only 1.25% per month.

**EMISSION-FREE OPERATION :** Electric motors produce no exhaust gas or emission. In addition, using rechargeable batteries means a sustainable use of resources.

Several brands and models of batteries and chargers are compatible with our Perimeter Wire Machine. Some brands or models are available in some countries while others are not. We invite you to check with your retailer to find out which ones are available in your area.

BATTERIES	BRAND	MODEL	VOLTAGE	RATED CAPACITY	CHARGING TIME (100%)	WEIGHT (LB)
	BRIGGS & STRATTON / SNAPPER XD	BSB2AH82	82V	2 Ah	30 min	3.3
	BRIGGS & STRATTON / SNAPPER XD	BSB4AH82	82V	4 Ah	60 min	5.7
	BRIGGS & STRATTON / SNAPPER XD	BSB5AH82	82V	5 Ah	75 min	5.7
	GREENWORKS COMMERCIAL	GL 250	82V	2,5 Ah	36 min	3.3
	GREENWORKS COMMERCIAL	GL 400	82V	4 Ah	60 min	5.7
	GREENWORKS COMMERCIAL	GL 500	82V	5 Ah	72 min	5.7
	GREENWORKS PRO	2901302	80V	2 Ah	30 min	3.3
	GREENWORKS PRO	2902502	80V	5 Ah	90 min	5.5
	CRAMER	82V220G	82V	3 Ah	45 min	3.5
	CRAMER	82V430G	82V	6 Ah	90 min	5.7
	STIGA	SBT 2580 AE	80V	2,5 Ah	40 min	3.5
	STIGA	SBT 4080 AE	80V	4 Ah	60 min	5.5
STIGA	SBT 5080 AE	80V	5 Ah	75 min	5.5	

CHARGERS	BRAND	MODEL	VOLTAGE	AMPS OUTPUT	SLOTS	WEIGHT (LB)
	BRIGGS & STRATTON / SNAPPER XD	BSRC82	82V	4 A	1	3.3
	GREENWORKS COMMERCIAL	GC 400	82V	4 A	1	3.5
	GREENWORKS COMMERCIAL	GC 420	82V	4 A	2	4.4
	GREENWORKS PRO	2901402	80V	4 A	1	5.5
	CRAMER	82C1G	82V	4 A	1	3.5
	CRAMER	82C2	82V	4 A	2	4.4
	STIGA	SFC 80 AE	80V	4 A	1	2.9

This list is not exhaustive. Other brands or models could be added.



"Makin' the Hard Jobs Easy"

# PERIMETER WIRE MACHINES

## ACCESSORIES



### **PWMA-0001**

#### **PERIMETER WIRE DRUM**

The perimeter wire drum allows to wind up bulk wire that comes with some robots.

**Material:** Plastic

**Weight:** 0.55 lb

**Dimensions:** 6-1/2" x 6-3/4"



### **PWMA-0002**

#### **PERIMETER WIRE BOX 7"**

The perimeter wire box 7" X 7" is designed for coils emptying from the center (e.g.: Robomow & Viking – 100 m (330')).

**Material:** Aluminium

**Weight:** 1.73 lb

**Dimensions:** 7" x 5-3/4" x 7"



### **PWMA-0003**

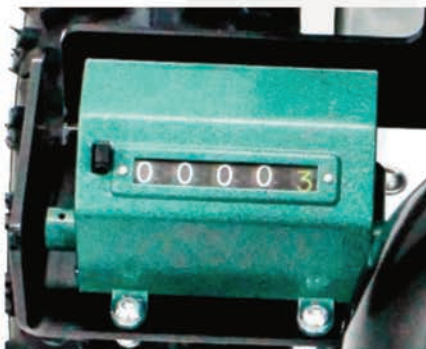
#### **PERIMETER WIRE BOX 9"**

The perimeter wire box 9" x 9" is designed for boxes emptying from the center (e.g.: AL-KO – 150 m (500')).

**Material:** Aluminium

**Weight:** 2.2 lb

**Dimensions:** 9" x 6" x 9"



### **PWMA-0006**

#### **WIRE METER**

The perimeter wire meter measures metres of wire as you install. Installed in 2 minutes on all 600MH machines with serial number PWM100777 and up. Saves time and takes out guessing from the billing process. Accurate reading, meter works in both directions. Use larger wire reels up to 800 meters (2625 feet). Save time and money!

**Material:** Aluminium

**Weight:** 2.9 lb

**Dimensions:** 5" x 7" x 5"



"Makin' the Hard Jobs Easy"

# PERIMETER WIRE MACHINES

## ACCESSORIES



### **PWMA-0007**

#### **REVERSIBLE BLADE**

The reversible blade has two types of teeth for all soil types.

**Material:** Steel

**Weight:** 2.25 oz

**Dimensions:** 3/4" x 4-13/16" x 3/16" (19 mm x 123 mm x 5 mm)



### **PWMA-0008**

#### **HEAVY DUTY SOLID CARBIDE BLADE**

The heavy duty solid carbide blade is perfect for all soil types (one blade included with the machine). Ideal for very stony and/or very compacted soils.

**Material:** Carbide

**Weight:** 5.32 oz

**Dimensions:** 13/16" x 5" x 5/16" (20 mm x 125 mm x 8 mm)



### **PWMA-0009**

#### **GREASE BOTTLE FOR BLADE TRANSMISSION - 60 ML (2 OZ)**

This Mobil Epic EP MOLY grease is the one to use in the blade transmission (one bottle included with each machine).

**Weight:** 2.72 oz



### **PWMA-0010**

#### **RETROFIT KIT FOR 6 MM (1/4") WIRE INSTALLATION**

For 600MH models 2016 and 2017. Bury perimeter wire up to 6 mm diameter. Simple and fast installation.

The kit includes:

- A** - 1 x heavy duty solid carbide blade
- B** - 1 x 6 mm wire guide
- 1 x cable deflector (not shown)

*Note: Since 2018, machines are equipped to install wire up to 6 mm diameter.*



"Makin' the Hard Jobs Easy"

# PERIMETER WIRE MACHINES

## ACCESSORIES



### **PWMA-0012<sup>(1)</sup> / PWMA-0013<sup>(2)</sup>**

**WIRE GUIDE ASSEMBLY - 6 MM<sup>(1)</sup> / WIRE GUIDE ASSEMBLY - 4 MM<sup>(2)</sup>**

This wire guide accepts all wires up to 6 mm<sup>1</sup>/ 4 mm<sup>2</sup> diameter. In addition to being robust, its shape is optimal for wire flow.

*Since 2018, all machines are equipped to install wire up to 6 mm diameter*

**Material :** Steel

**Weight :** 10.5 oz

**Dimensions :** 12-5/8" x 3/8" (10 mm)<sup>(1)</sup> / 12-5/8" x 1/4" (7 mm)<sup>(2)</sup>



### **PWMA-0014**

**SUPPORT FOR 1000-METER WIRE SPOOL**

This support is designed to fit 1000-meter perimeter wire spools. Easy to install on our machines in minutes and allows user to work longer with a single coil.

**Material :** Stainless steel

**Weight :** 4.2 lb



### **PWMA-0011-M / PWMA-0011-L**

**OPTIMAL COMFORT GLOVES**

The gloves improve the comfort of the operator in difficult field conditions. The 100% polyester support and soft weave makes it very comfortable for long-lasting wear and allows good dexterity and grip. Rubber padded palm and fingertips. Thermoplastic back reinforcement. CE Certified



### **PWMA-0015**

**MULTI-POSITION ANTI-VIBRATION HANDLE (RETROFIT KIT)**

To be installed on 600MH and 600MH-Li perimeter wire machines from generations prior to 2020. It improves operator comfort by reducing vibration levels from 40%.



"Makin' the Hard Jobs Easy"

# PERIMETER WIRE MACHINES

## WARRANTY



### **PWMA-0016**

**SET OF 2 CHEVRON TIRES ON RIMS FOR 600MH**

These tires improve traction in wet and slippery terrain and prevent dirt build-up in muddy terrain conditions.

**Dimensions :** 4.10 / 3.00-4

### **WARRANTY**

The Portable Winch Co. Perimeter Wire Machine is warranted against manufacturing defects when owned by the "original owner" as defined herein. The "original owner" is defined as the person or entity who purchased the machine from an authorized retailer as demonstrated by the original invoice. The warranty is transferable if the new buyer holds a copy of the original invoice. This warranty does not apply to items sold "as is".

The Perimeter Wire Machine from Portable Winch Co. is covered for:

1-year warranty (service provided by Portable Winch Co. or its retailers); Portable Winch Co. will repair or replace defective parts at no charge for parts or labor if the part proves to be defective due to a defect in material or workmanship during the warranty period.

Items not covered under this warranty:

Items normally maintained by the customer and/or worn with normal and regular use including belts, blade, wire guide, springs, cables, and any other parts defined as those coming into contact with the ground or the wire.