

# HIGH-PRESSURE LIFTING BAGS

## 10 bar (145 psi)



**EN 13731  
NFPA 1936**

**Increased  
lifting capacity**

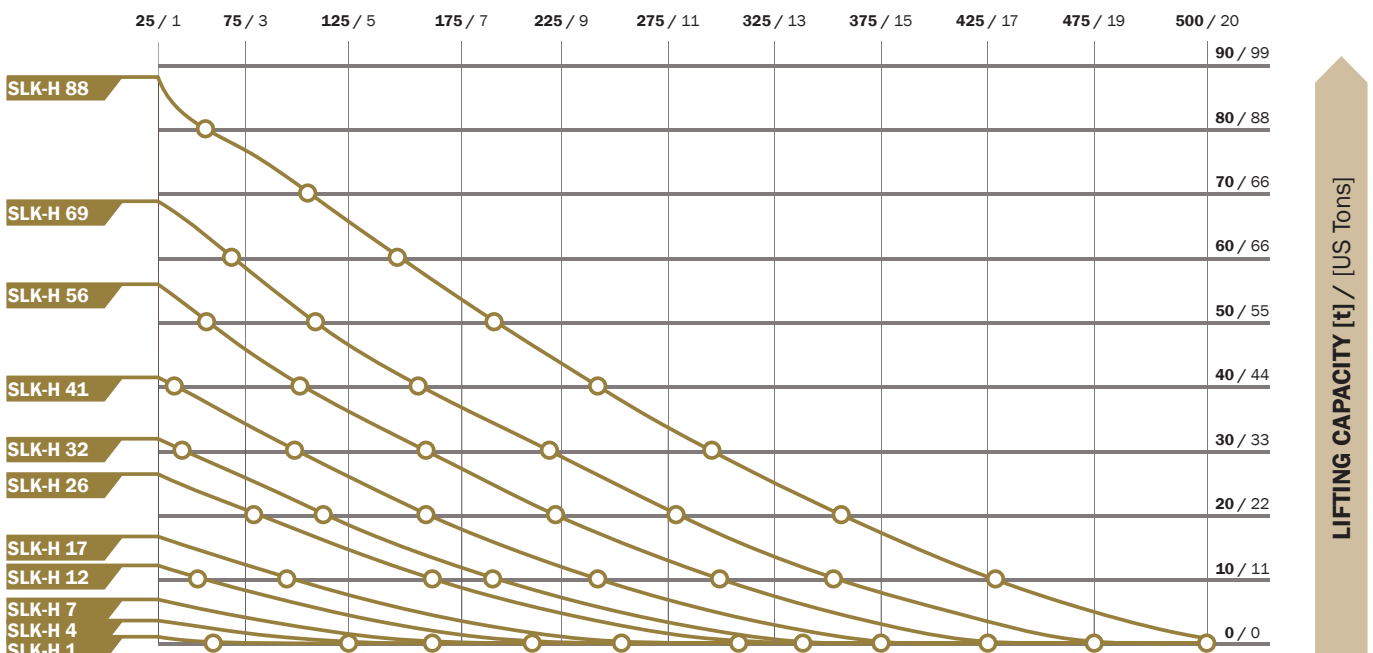
**Compatible with  
8 bar (116 psi) bags**

**Heavy  
duty**

### TECHNICAL DATA

TYPE	PART NUMBER	DIMENSIONS			WEIGHT	WORKING PRESSURE	AIR REQUIREMENT	MAX. LIFTING CAPACITY	MAX. LIFTING HEIGHT
		LENGTH	WIDTH	HEIGHT					
		[cm] / [inch]	[cm] / [inch]	[cm] / [inch]					
SLK-H 1	291240	15 / 6"	15 / 6"	2.5 / 1"	0.55 / 1.2	10 / 145	7 / 0.3	1.2 / 1.3	8 / 3.1"
SLK-H 4	291241	22.5 / 9"	22.5 / 9"	2.5 / 1"	1.25 / 3	10 / 145	19 / 0.7	3.3 / 3.6	13 / 5.1"
SLK-H 7	291242	30 / 12"	30 / 12"	2.5 / 1"	2 / 4	10 / 145	52 / 1.9	6.8 / 7.5	16 / 6.3"
SLK-H 12	291243	38 / 15"	38 / 15"	2.5 / 1"	3.5 / 8	10 / 145	106 / 3.8	12.1 / 13.3	21 / 8.3"
SLK-H 17	291244	45 / 18"	45 / 18"	2.5 / 1"	5 / 11	10 / 145	186 / 6.6	16.6 / 18.3	25 / 9.3"
SLK-H 26	291245	55 / 22"	55 / 22"	2.5 / 1"	7 / 15	10 / 145	362 / 12.8	26.3 / 28.9	30 / 11.8"
SLK-H 32	291246	61 / 24"	61 / 24"	2.5 / 1"	9 / 20	10 / 145	508 / 18.0	31.8 / 35	34 / 13.4"
SLK-H 41	291247	69 / 27"	69 / 27"	2.5 / 1"	11 / 24	10 / 145	759 / 26.8	41.3 / 45.4	38 / 15"
SLK-H 56	291248	78 / 31"	78 / 31"	2.5 / 1"	14.1 / 31	10 / 145	1122 / 39.7	55.8 / 61.4	42 / 16.5"
SLK-H 69	291249	87 / 34"	87 / 34"	2.5 / 1"	18.2 / 40	10 / 145	1595 / 56.4	68.7 / 75.6	47 / 18.5"
SLK-H 88	291250	94.5 / 37"	94.5 / 37"	2.6 / 1"	22.7 / 50	10 / 145	1650 / 58.3	88 / 96.8	52 / 20.5"

### LIFTING HEIGHT [mm] / [inch]



LIFTING CAPACITY [t] / [US Tons]