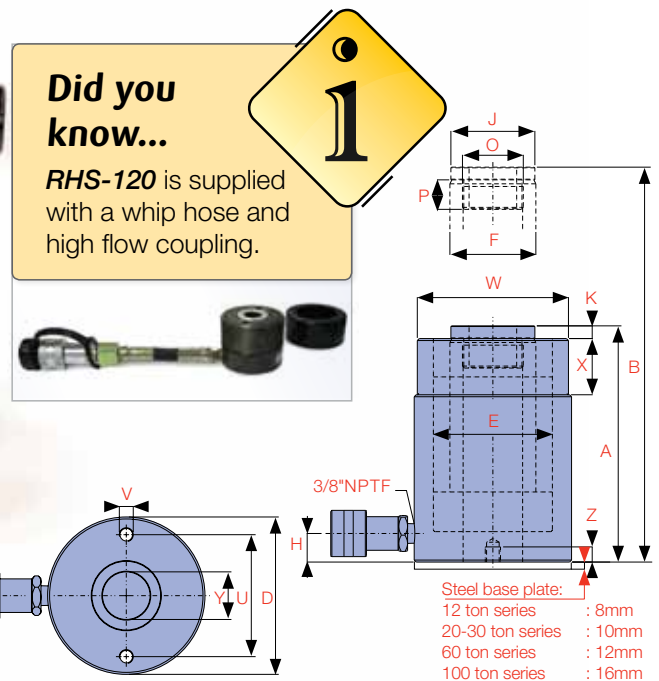


## THE *RHS-SERIES* IS A SPRING RETURN HOLLOW PISTON ROD CYLINDER.

The hollow piston allows for a rod or cable to be inserted through the entire body length. They can be used in tensioning, load testing, bush extracting and maintenance applications. All RHS-Series cylinders feature a hard chrome cylinder bore and piston rod for maximum corrosion resistance and a bronze overlay piston bearing area to reduce scoring and increase service life. All cylinders incorporate a bolt on removable steel base plate for extra protection.



Model Number	Cylinder Capacity ton* / kN	Stroke (mm)	Cylinder Effective Area (cm <sup>2</sup> )	Oil Capacity (cm <sup>3</sup> )	A Collapsed Height (mm)	B Extended Height (mm)	D Outside Diameter (mm)	E Cylinder Bore Diameter (mm)	F Piston Rod Diameter (mm)	H Base to Advance Port (mm)	J Standard Saddle Diameter (mm)	
RHS-120	12	125	8	17.9	14	55	63	69	54.1	35.1	9	-
RHS-121		125	42	17.9	75	120	162	69	54.1	35.1	19	-
RHS-1211		125	42	17.9	75	120	162	69	54.1	35.1	19	-
RHS-123		125	76	17.9	135	184	260	69	54.1	35.1	19	-
RHS-202	20	215	49	30.7	149	162	211	98	73.1	54.1	19	54
RHS-204		215	102	30.7	311	242	344	98	73.1	54.1	19	54
RHS-206		215	155	30.7	472	306	461	98	73.1	54.1	19	54
RHS-302	30	326	64	46.6	297	178	242	114	88.9	63.5	22	63
RHS-304		326	102	46.6	474	233	335	114	88.9	63.5	22	63
RHS-306		326	155	46.6	720	330	485	114	88.9	63.5	25	63
RHS-603	60	576	76	82.3	629	247	323	159	123.9	91.9	31	91
RHS-604		576	103	82.3	838	286	389	159	123.9	91.9	31	91
RHS-606		576	153	82.3	1,266	323	476	159	123.9	91.9	31	91
RHS-1003	100	931	76	133.0	1,011	254	330	212	165.1	127.0	38	126
RHS-1006		931	152	133.0	2,026	373	525	212	165.1	127.0	54	126

\* Nominal Cylinder Capacity in ton - see kN values for actual capacity

**PISTON ROD WIPER**

reduces contaminants

**HARD CHROME PLATED PISTON ROD**

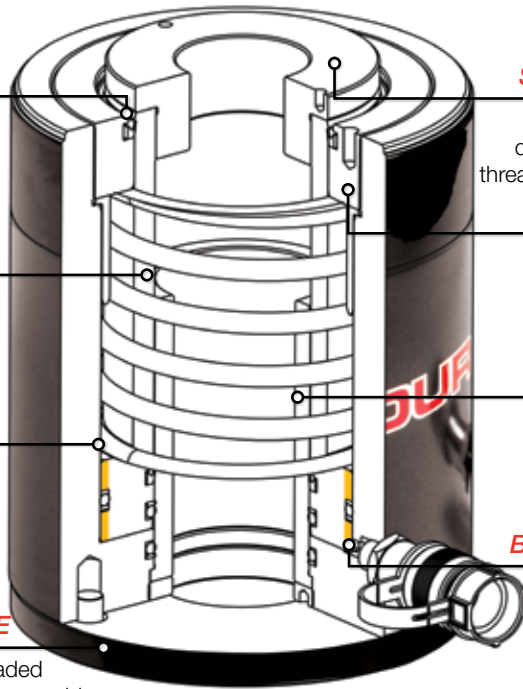
for maximum corrosion resistance and cylinder life

**HARD CHROME PLATED BORE**

for maximum corrosion resistance and cylinder life

**STEEL BASE PLATE**

protects base and threaded mounting holes and is removable



**THREADED FIT SMOOTH SADDLE**

to prevent piston rod damage. Optional TSH threaded saddles available

**GLAND NUT**

with low friction coating withstands full dead end loading

**RETURN SPRING**

is sized to ensure efficient piston rod return and maximum spring life

**BRONZE OVERLAY**

on piston bearing area reduces side load induced damage and extends cylinder life



CAPACITY

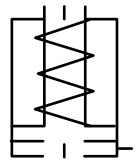
**12 - 100 ton**

STROKE

**8 - 155 mm**

MAXIMUM OPERATING PRESSURE

**700 bar**

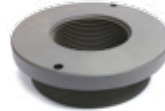
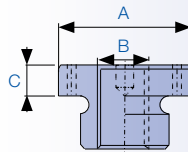


**B**

**CYLINDERS**

**Did you know...**

Lightweight aluminium hollow cylinders are available in single and double acting designs.



Model Number	Optional Threaded Saddles			Model Number
	A (mm)	B	C (mm)	
TSH-20	53	1"-8UNC	9	RHS-202
TSH-20	53	1"-8UNC	9	RHS-206
TSH-30	63	1-1/4"-7UNC	9	RHS-302
TSH-30	63	1-1/4"-7UNC	9	RHS-306
TSH-60	91	1-5/8"-5-1/2UN	12	RHS-603
TSH-60	91	1-5/8"-5-1/2UN	12	RHS-604
TSH-60	91	1-5/8"-5-1/2UN	12	RHS-606
TSH-100	126	2-1/2"-8UN	13	RHS-1003
TSH-100	126	2-1/2"-8UN	13	RHS-1006

K Saddle Protrusion from Piston Rod (mm)	O Piston Rod Internal Thread	P Piston Rod Thread Length (mm)	W Collar Thread	X Collar Thread Length (mm)	Y Centre Hole Diameter (mm)	Base Mounting Holes			Weight (kg)	Model Number	Handle Type
						U Bolt Circle Diameter (mm)	V Thread	Z Thread Depth (mm)			
-	3/4"-16UNF	16	2-3/4"-16UN	30	19.6	50.8	5/16"-18UNC	9.0	1.5	RHS-120	
-	-	-	2-3/4"-16UN	30	19.6	-	-	-	2.8	RHS-121	
-	3/4"-16UNF	16	2-3/4"-16UN	30	19.6	-	-	-	2.8	RHS-1211	
-	-	-	2-3/4"-16UN	30	19.6	50.8	5/16"-18UNC	12.7	4.4	RHS-123	
6.9	1-9/16"-16UN	19	3-7/8"-12UN	38	26.9	82.6	3/8"-16UNC	9.4	7.7	RHS-202	♣
6.9	1-9/16"-17UN	19	3-7/8"-13UN	38	26.9	82.6	3/8"-16UNC	9.4	10.0	RHS-204	♣
6.9	1-9/16"-16UN	19	3-7/8"-12UN	38	26.9	82.6	3/8"-16UNC	9.4	14.1	RHS-206	♣
9.7	1-13/16"-16UN	22	4-1/2"-12UN	42	33.3	92.2	3/8"-16UNC	14.0	10.9	RHS-302	♣
9.7	1-13/16"-17UN	22	4-1/2"-13UN	42	33.3	92.2	3/8"-16UNC	14.0	14.0	RHS-304	♣
9.7	1-13/16"-18UN	22	4-1/2"-12UN	42	33.3	92.2	3/8"-16UNC	14.0	21.8	RHS-306	♣
12.7	2-3/4"-16UN	19	6-1/4"-12UN	48	53.8	130.3	1/2"-13UNC	14.0	28.1	RHS-603	♥
12.7	2-3/4"-16UN	19	6-1/4"-12UN	48	53.8	130.3	1/2"-13UNC	14.0	30.0	RHS-604	♥
12.7	2-3/4"-16UN	19	6-1/4"-12UN	48	53.8	130.3	1/2"-13UNC	14.0	35.4	RHS-606	♥
12.7	4"-16UN	25	8-3/8"-12	60	79.0	177.8	5/8"-11UNC	19.0	63.0	RHS-1003	♥
12.7	4"-16UN	25	8-3/8"-13	60	79.0	177.8	5/8"-11UNC	19.0	73.0	RHS-1006	♥

HANDLE TYPES: ♣ WELDED ♦ EYEBOLT ♥ REMOVABLE STRAP HANDLE ♠ THREAD