

NR BATTERY IMPACT WRENCH

With 2700 Nm of torque and dual drive for vertical and horizontal use, the NR-25B is the most powerful and versatile battery impact wrench in the industry.

Used for assembly of steel structures such as bridges, building frames, rail tracks, ship building, heavy equipment maintenance, pipelines and industrial applications.

Scan QR Code
for more info:



Rainproof

Vertical & Horizontal Applications

Heavy Duty Applications

Without Maintenance

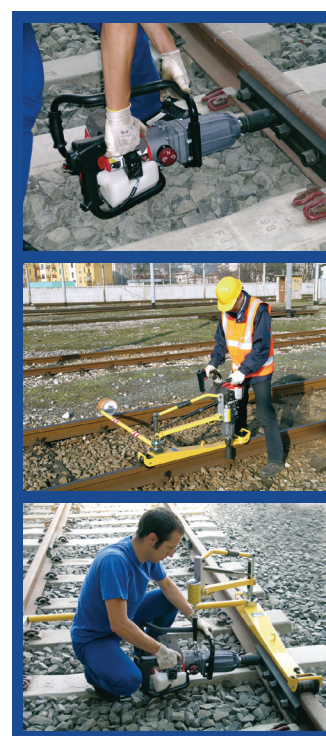
Low Vibrations

2000 ft lbs Maximum Torque



More Information

- The IP44M rain proofing and vibration damping system make it a safe solution that guarantees high performance.
- Powered by 2 batteries 36V – 6.2 Ah Li-Ion in parallel to ensure an optimal power-autonomy ratio
- Equipped with powerful LED lights, operators will be able to work more efficiently at night and in tunnels.
- Low-impact vibrations for operator hand/arm protection, using dampers between the handles and motor unit
- Easily visible and intuitive front control panel with display and 5-levels torque selector and inversion movement push button
- The brushless motor is maintenance free. Small footprint, maximum torque and power available.
- It can be used both in portable mode and in combination with the CS-EU support trolley
- The double charger allows you to charge both batteries at the same time in 90 minutes.



"Makin' the Hard Jobs Easy"