

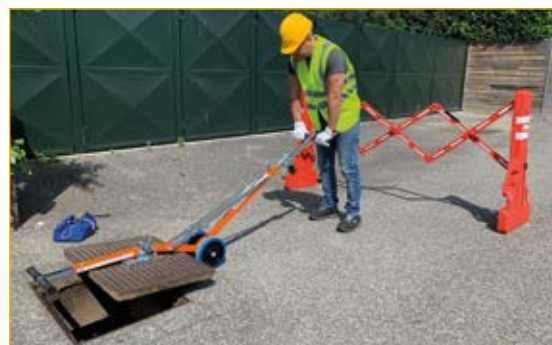
# CL10

## MANUAL MAGNETIC MANHOLE LIFTER

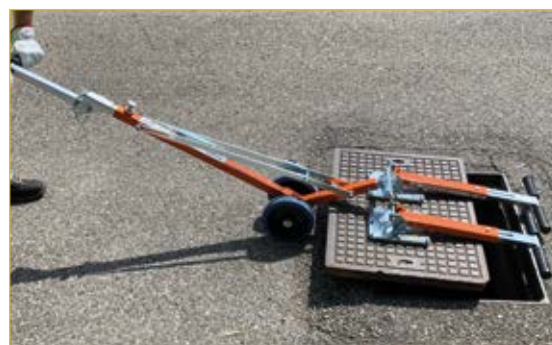
Universal model with rectangular base suitable for lifting, moving and repositioning most of manhole covers, drains, cast iron grates and ferrous materials.



Use 1: manual Opening.



Use 2: opening with wheeled lever APS90 or APS80.



Use 3: opening with two plates in parallel position.

Use 4: lifting with handle locked horizontally.

### TECHNICAL CHARACTERISTICS

Code	K0265	
Weight	Kg	7
Base dimension	cm	21 x 16
Lengthen extension	cm	70
Retracted size	cm	55 x 16
Lifting power	Kg	400 (in condizioni ideali*)
Number and type of Magnets	16 neodymium magnets	

\* Attraction force tests performed on a C36 iron base with a thickness of 18 mm. The forces of attraction can vary according to the thickness and material of the base to be lifted. Tolerance  $\pm 5$

### ACCESSORIES

Anti-magnetic protective sack **Cod. A221006**



It prevents accidental contact between the magnetic plate and metal objects and for safety transport or storage.