

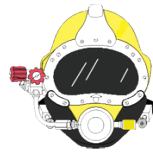
DIAMOND CHAIN SAW

HDS 6

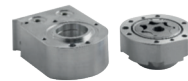
Hydraulic pressure 175 Bar



- Deep cutting capacity
- Side handle rubbered for high comfort
- High speed hydraulic motor 6600RPM
- Chain cooling water tap
- Quick water coupler
- Quick tension system to adjust chain tension (Patented)
- Full body in aluminium
- Bubble level
- Flush cut



Available in underwater version



Engine detail of our production, capable of running up to 6000 rpm continuously QUICK TENSION system for fast chain pulling

HDS6 is a diamond chain saw suitable for precise cuts with edges or in flush cut mode in concrete and building materials. **HDS6** is also suitable for cuts on cast iron or iron pipes. The innovative patented system, Quick Tension, allows a smooth and fast management of the chain tension without disassembling the side casing and facilitating the operator in uncomfortable situations or in underwater applications.

TECHNICAL CHARACTERISTICS	HDS 6
Weight (kg)	13kg with bar & chain 40cm
Dimension LxH (cm)	620x30
Width (cm)	24
Ideal flow L/min	40
Hydraulic pressure Bar	175
Operator speed	5800 rpm free of load
Cutting capacity (cm)	up to 65

