



# SECTION 3

## ALUMINUM ALLOY EQUIPMENT FOR OVERHEAD TRANSMISSION LINES

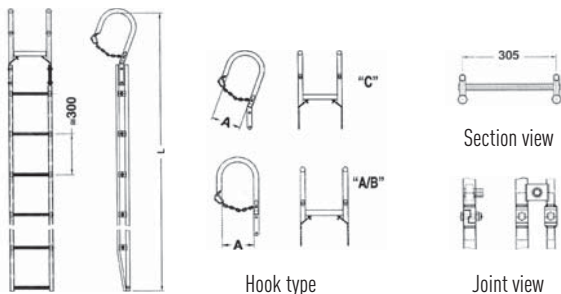
Suspension ladders	2
Horizontal platforms/ladders	3
Dead-end Working platform/sagging bridges	7
Ladder for circular and polygonal poles	8
Working platform	10
Crossing protection structures	11
Gin poles	12
Inspection Line Carts	15
Spacer Bicycle	24

# ALUMINUM ALLOY EQUIPMENT FOR OVERHEAD TRANSMISSION LINES

## 011/...

### SUSPENSION LADDER

Suitable for operations on over head transmission lines.  
Light Aluminum alloy, welded (Certified TIG system)  
with skid-proof rungs and interchangeable galvanized  
steel hook with safety chain.  
Vertical working load 300 daN.



#### On request:

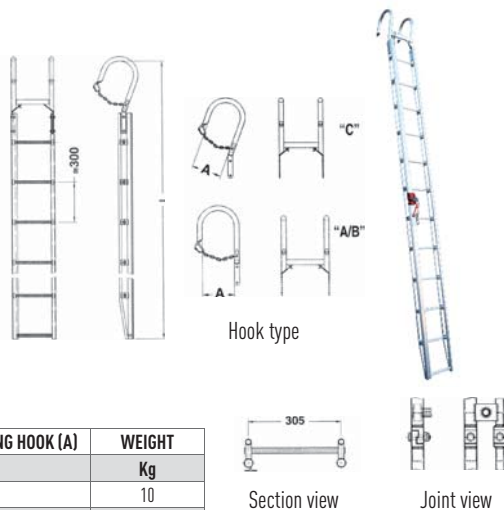
- Hooks C and A/B available up to 400 mm opening
- Different ladder lengths

MODEL	SECTION NUMBER	LENGTH (L)	STANDARD OPENING HOOK (A)	WEIGHT
		m	mm	Kg
011/2,5	1	2,5	220	9.2
011/3	1	3	220	10.3
011/3,5	1	3,5	220	11.2
011/4	1	4	220	12.3
011/5	1	5	220	14.8
011/6	1	6	220	17.2
011/6.2	2	6 (4+2)	220	17.8
011/8.2	2	8 (4+4)	220	22.6
011/10.2	2	10 (5+5)	220	27.5

## 011/A...

### SUSPENSION LADDER

Suitable for operations on over head transmission lines.  
Light Aluminum alloy, welded (Certified TIG system)  
with skid-proof rungs, interchangeable galvanized steel  
hook with safety chain and anti-fall rail (to be used with  
anti-fall device model. MA 29/1).



MODEL	SECTION NUMBER	LENGTH (L)	STANDARD OPENING HOOK (A)	WEIGHT
		m	mm	Kg
011/A 2,5	1	2.5	220	10
011/A 3	1	3	220	11.5
011/A 3,5	1	3,5	220	12.4
011/A 4	1	4	220	13.8
011/A 5	1	5	220	17
011/A 6	1	6	220	20
011/A 6.2	2	6 (4+2)	220	20.4
011/A 8.2	2	8 (4+4)	220	26.4
011/A 10.2	2	10 (5+5)	220	32.3

#### On request:

- Hooks C and A/B available up to 400 mm opening
- Different ladder lengths
- Ladder suitable for two linemen (2 antifall opposite profile) Art. 011/B...

## 011/G...

### SUSPENSION LADDER/PLATFORM

Suitable for operations on vertical as well as horizontal insulator strings in tension or suspension towers.

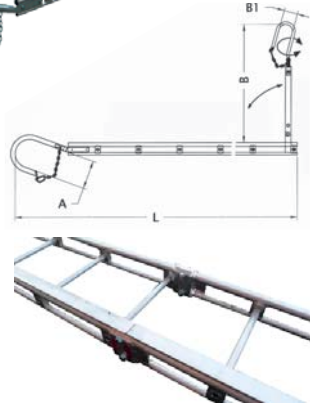
Light Aluminum alloy, welded (TIG system) with skid-proof rungs.

Complete with interchangeable galvanized steel hook with safety chain (tower side) and swiveling/foldable hook model AG/SS (conductor side).

- Vertical working load 300 daN.
- Horizontal working load 100 daN.

#### On request:

- Conductor-side swiveling/foldable hook with nylon sheave Mod. AG/SS-R
- Reinforced type structure with horizontal working load capacity of 200 daN



MODEL	SECTION NUMBER	LENGTH (L)	(A)	(B)	(B1)	WEIGHT
		m	mm	mm	mm	
011/G 2,5	1	2,5	220	900	100	12.2
011/G 3	1	3	220	900	100	13.5
011/G 3,5	1	3,5	220	900	100	14.8
011/G 4	1	4	220	900	100	16.2
011/G 5	1	5	220	900	100	18.8
011/G 6	1	6	220	900	100	21.5
011 /G 6.2	2	6 (4+2)	220	900	100	22.5

## 011/AG...

### SUSPENSION LADDER/PLATFORM

Suitable for operations on vertical as well as horizontal insulator strings in tension or suspension towers

Light Aluminum alloy, welded (TIG system) with skid-proof rungs

Complete with interchangeable galvanized steel hook with safety chain (tower side) and swiveling/foldable hook model AG/SS (conductor side).

- Vertical working load 300 daN.
- Horizontal working load 100 daN.

#### On request:

- Conductor-side swiveling/foldable hook with nylon sheave Mod. AG/SS-R.
- Reinforced type structure with horizontal working load capacity of 200 daN.

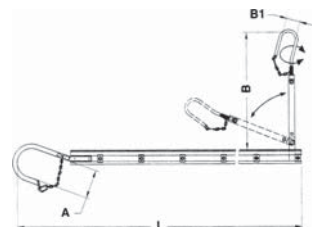


Mod. AG/SS



Mod. AG/SS-R

MODEL	SECTION NUMBER	LENGTH (L)	(A)	(B)	(B1)	WEIGHT
		m	mm	mm	mm	
011/AG 2,5	1	2,5	220	900	100	13.2
011/AG 3	1	3	220	900	100	14.8
011/AG 3,5	1	3,5	220	900	100	16.3
011/AG 4	1	4	220	900	100	17.9
011/AG 5	1	5	220	900	100	21.1
011/AG 6	1	6	220	900	100	24.2
011 /AG 6.2	2	6 (4+2)	220	900	100	25.2



# ALUMINUM ALLOY EQUIPMENT FOR OVERHEAD TRANSMISSION LINES

## 011/AGG...

### SUSPENSION LADDER/PLATFORM

Suitable for operations on vertical as well as horizontal insulator strings in tension or suspension towers. Light Aluminum alloy, welded (TIG system) with skid-proof rungs and anti-fall rail (to be used with anti-fall device model. MA 29/1).

Complete with swiveling/foldable steel hook with safety chain (tower side) and swiveling/foldable hook model AG/SS (conductor side).

- Vertical working load 300 daN.
- Horizontal working load 100 daN.

#### On request:

- Conductor-side swiveling/foldable hook with nylon sheave Mod. AG/SS-R.
- Reinforced type structure with horizontal working load capacity of 200 daN.



MODEL	SECTION NUMBER	LENGTH (L)	(A)	(A1)	(B)	(B1)	WEIGHT
		m	mm	mm	mm	mm	
011/AGG 3	1	3,13	220	1000	900	100	19
011/AGG 3,5	1	3,6	220	1000	900	100	21
011/AGG 4	1	4,16	220	1000	900	100	22,5
011/AGG 5	1	5,03	220	1000	900	100	26,5
011/AGG 6	1	6,25	220	1000	900	100	32,5
011/AGG 6.2	2	6,25 (4.25+2)	220	1000	900	100	33,5

## MA29/...

### ANTI-FALL DEVICE

Anti-fall device suitable for models 011/A, 011/AG, 011/AGG and 014.

Complete with safety belt connector (carabiners) and shock absorber nylon strap in compliance with 89/686/CEE standard.

MODEL	"T" PROFILE	WORKING LOAD	WEIGHT	FOR LADDERS MODEL
	mm			
MA29/1	40	100	1.03	011/A... 011/B... 011/AG... 011/AGG... 014 ...
MA29/1.L	40	100	1.08	014 ...
MA29/1.R	40	100	1.03	010/...

MA 29/1

MA 29/1.L



## 013/G...

### TRIANGULAR SECTION HORIZONTAL PLATFORM STRUCTURE

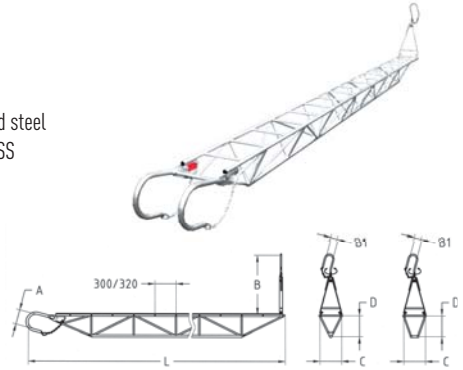
Suitable to be used on vertical as well as horizontal position.

Light Aluminum alloy, welded (TIG system) with skid-proof rungs galvanized steel hook with safety chain (tower side) and swiveling/foldable hook model AG/SS (conductor side).

- Horizontal working load 200 daN.
- Vertical working load 300 daN.

#### On request:

- Conductor side twisting hook complete of nylon sheave Mod. AG/SS/R
- Tower side hook available up to 400mm opening
- Different lengths and composition



MODEL	SECTION NUMBER	LENGTH (L)	(A)	(B)	(B1)	C	D	WEIGHT
		m	mm	mm	mm	mm	mm	kg
013/G 3,5	1	3,5	220	900	100	320	320	17
013/G 4	1	4	220	900	100	320	320	18.5
013/G 4,5	1	4,5	220	900	100	320	320	20
013/G 5	1	5	220	900	100	320	320	21.5
013/G 6	1	6	220	900	100	320	350	24.5
013/G 6.2	2	6 (4+2)	220	900	100	320	350	26
013/G 7.2	2	7 (4+3)	220	900	100	320	350	30.5
013/G 8.2	2	8 (4+4)	220	900	100	320	350	34

## 013/TP...

### TRAPEZOIDAL SECTION HORIZONTAL PLATFORM STRUCTURE

Suitable to be used on vertical as well as horizontal position.

Light Aluminum alloy, welded (TIG system) with skid-proof rungs galvanized steel hook with safety chain (tower side) and swiveling/foldable hook model AG/SS (conductor side).

- Horizontal working load 300 daN.
- Vertical working load 300 daN.

#### On request:

- Conductor side twisting hook complete of nylon sheave Mod. AG/SS/R
- Tower side hook available up to 400mm opening
- Different lengths and composition



MODEL	SECTION NUMBER	LENGTH (L)	(A)	(B)	(B1)	C	D	WEIGHT
		m	mm	mm	mm	mm	mm	kg
013/TP 3,5	1	3,5	220	900	100	320	320	19
013/TP 4	1	4	220	900	100	320	320	21
013/TP 4,5	1	4,5	220	900	100	320	320	23
013/TP 5	1	5	220	900	100	320	320	24.5
013/TP 6	1	6	220	900	100	320	350	28
013/TP 6.2	2	6 (4+2)	220	900	100	320	350	29.5
013/TP 7.2	2	7 (4+3)	220	900	100	320	350	34.5
013/TP 8.2	2	8 (4+4)	220	900	100	320	350	39

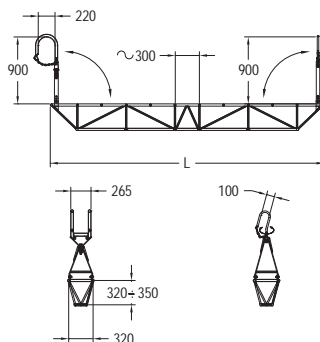
## 013/G.GG... or 013/TP.GG...

### TRIANGULAR/TRAPEZOIDAL SECTION HORIZONTAL PLATFORM STRUCTURE

Suitable to be used on vertical as well as horizontal position.

Light Aluminum alloy, welded (TIG system) with skid-proof rungs galvanized foldable and twisting hook Mod. AGG/SS (tower side) and swiveling/foldable hook model AG/SS (conductor side).

- Horizontal working load 200 daN (triangular) or 300 daN (trapezoidal).
- Vertical working load 300 daN.



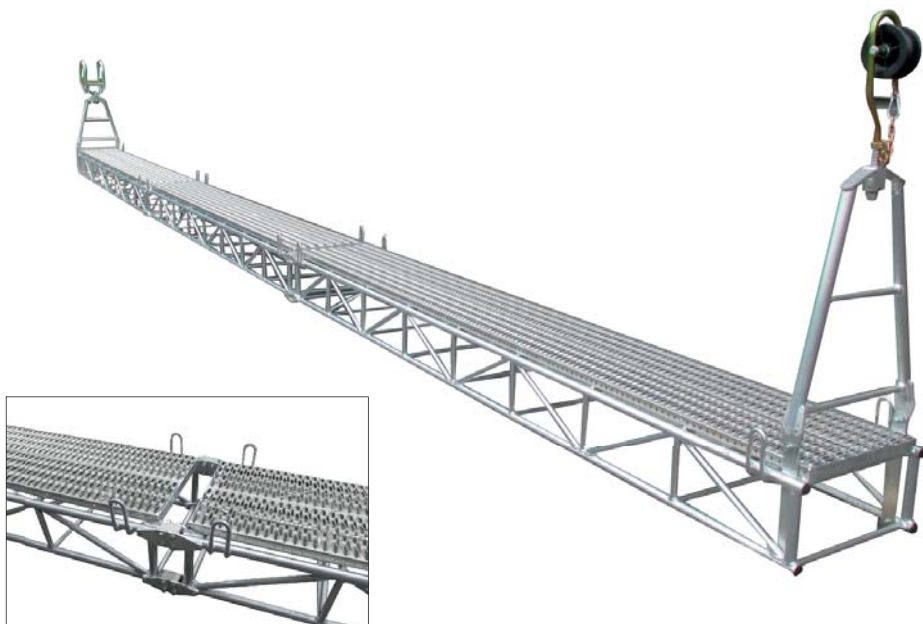
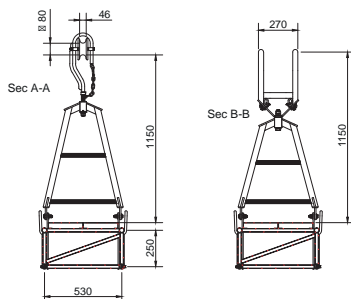
## 017

### RECTANGULAR SECTION HORIZONTAL PLATFORM STRUCTURE

Suitable to be used on vertical as well as horizontal position.

Light Aluminum alloy, welded (TIG system) with skid-proof floor "Graepel Gripp system". galvanized foldable and twisting hooks; double swivel hook (tower side), single hook with nylon roller (conductor side).

- Standard length 12m (4+4+4), other lengths upon request.
- Horizontal working load 300 daN.
- Weight 153 Kg.

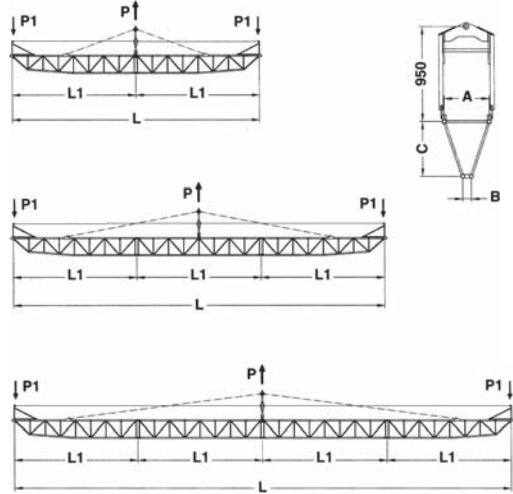




070/...

## DEAD-END WORKING PLATFORM

Light Aluminum alloy, welded (TIG system) modular structure, complete with balanced hanging point, stay rod assembly (to suit different compositions and lengths) and galvanized steel life-line (anti-fall barrier).



### On request:

- Press trolley track Mod. 070/BP
- Press trolley 360° angle rotation Mod. 070/BPC (weight 12 kg)
- Additional anti-fall barrier Mod. 070/BAC
- Tailor made lengths and compositions.

MODEL	WORKING LOAD P (Max P1=300 daN)	BREAKING LOAD	TOTAL LENGTH (L)	LENGTH AND COMPOSITION (L1)	DIMENSIONS (mm)			WEIGHT ANTIFALL BARRIER ENCLOSED
		daN	m	m	A	B	C	kg
070/4	600	1800	4	4	350	85	390	50
070/5	600	1800	5	5	350	85	390	56
070/6	600	1800	6	6	350	85	390	62
070/6.2	600	1800	6	3+3	350	85	390	65
070/7.2	600	1800	7	3,5+3,5	350	85	446	77
070/8.2	600	1800	8	4+4	350	85	446	86
070/10.3	600	1800	10	4+2+4	350	85	446	103
070/12.3	600	1800	12	4+4+4	350	85	446	115
070/14.3	600	1800	14	5+4+5	350	85	446	126
070/16.4	600	1800	16	4+4+4+4	350	85	446	144
070/18.3	600	1800	18	6+6+6	350	85	446	160
070/20.4	600	1800	20	5+5+5+5	450	85	550	200
070/24.4	600	1800	24	6+6+6+6	450	85	550	254



Antifall barrier view Mod. DT070BAC...  
(Homologated as "ANTI-FALL HORIZONTAL LIFE LINE" EN 795 standard by ANCCP INSTITUTE)



Rail ways profiles Mod. DT070BP...

Press trolley Mod. DT070BPC...

## 014

### ALUMINIUM LADDER WITH SAFETY DEVICE FOR STEEL AND CONCRETE POLE CLIMBING

Suitable for climbing circular and polygonal poles. For quadrangular poles a special configuration is available upon request.

A special attachment allows the operator to climb in safe conditions.

Made of welded (TIG system) light Aluminum alloy, with skid-proof rungs.

Modular structure with base and top sections and as many intermediate element as needed to reach the desired length (up to 30m).

The ladder is equipped with two anti-fall devices with anchoring points for operator's safety belt.

An Aluminum Alloy service platform for the operator is also available upon request.

#### Note:

- To prevent undesired torsions on the structure while operating on high poles (above 30m), a chain-locking device is also available on request. (Mod. 014/BIP).

#### Weights with standard accessories:

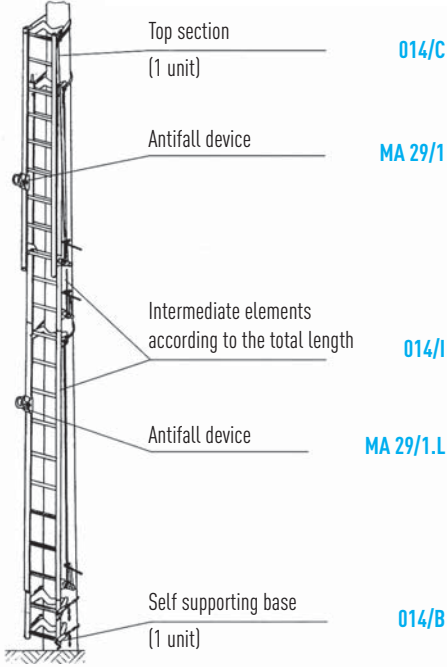
- |                              |          |
|------------------------------|----------|
| - Base 014/B                 | - 5.5 Kg |
| - Intermediate section 014/I | - 6 Kg   |
| - Top section 014/C          | - 6.5 Kg |
| - Small platform 014/PL      | - 1 Kg   |







## EXAMPLE OF COMPOSITION



014/C

MA 29/1

014/I

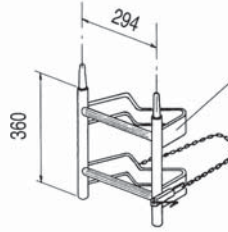
MA 29/1.L

014/B

## ACCESSORIES

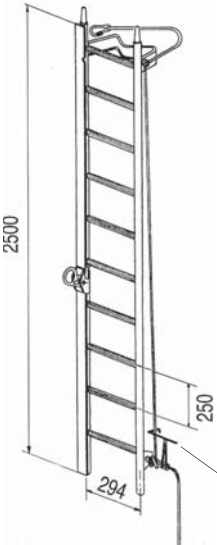


1) Ladder utility platform  
014/PL



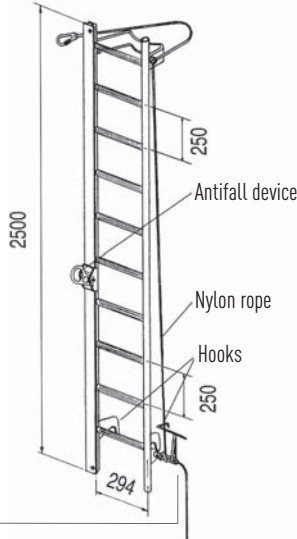
2) Set supporting base with chain  
014/B

Intermediate section 014/I



Dimensions may vary without notice

Top section 014/C



MA 29/1  
Antifall device  
for top section

MA 29/1.L  
Antifall device  
for intermediate  
sections



# ALUMINUM ALLOY EQUIPMENT FOR OVERHEAD TRANSMISSION LINES

## 010/...

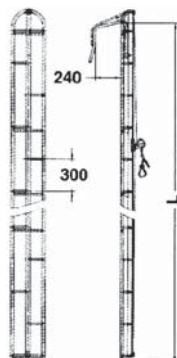
### TOWER CLIMBING LADDER

Suitable to climb towers in safe conditions.  
Light Aluminum alloy, welded (TIG system) with skid-proof rungs and anti-fall rail (to be used with anti-fall device model. MA 19/1R).

- Vertical working load 100 daN.

MODEL	LENGHT (L)	WEIGHT
	m	kg
010/1	3.7	9
010/2	4.7	11

On request: other lenght



## 071/EL...

### POLE WORKING PLATFORM (Rectangular shape)

Suitable for circular/polygonal poles.  
Made of welded light Aluminum alloy (TIG system), with skid-proof flooring complete with nylon strap locking device.

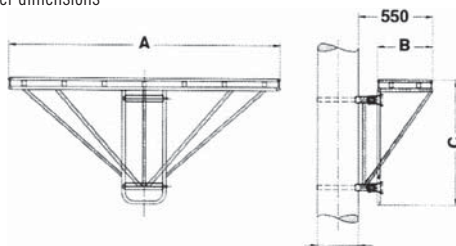
- Working load 100 daN.

MODEL	DIMENSIONS (mm)			WEIGHT
	A	B	C	Kg
071/EL	684	410	488	8.5
071/EL 1.5	1500	410	925	13.5
071/EL 2.5	2500	410	925	17

On request:

- Working load 150 daN

- Other dimensions



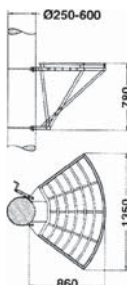
## 071V...

### POLE WORKING PLATFORM (Semi-circular shape)

Suitable for circular/polygonal poles.  
Made of welded light Aluminum alloy (TIG system), with skid-proof pipe flooring, complete with chain locking device.

- Weight 14 Kg.

- Working load 200 daN.



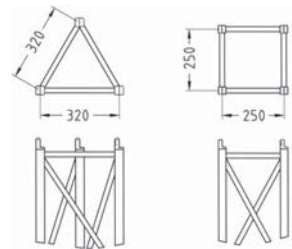
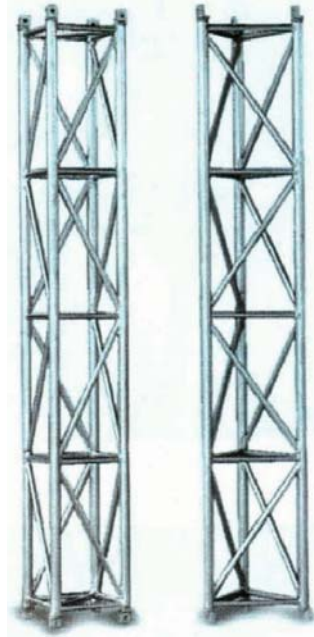
## ALUMINIUM POLE STRUCTURE FOR CONDUCTOR CROSSING PROTECTION

Suitable for road/existing lines crossing operations.  
Triangular or square section modular (2 or 3 meter) elements,  
made of TIG welded light Aluminum alloy.  
Complete with galvanized steel accessories.

MODEL	LENGHT	SECTION STRUCTURE	WEIGHT
	m		
057/AL 2	2	TRIANGULAR	6.6
057/AL 4	4	TRIANGULAR	13.2
058/AL 2	2	QUAD	8.6
058/AL 4	4	QUAD	17.2

### ACCESSORIES

DESCRIPTION	MODEL FOR TRIANGULAR SECTION	MODEL FOR QUAD SECTION
V Top device for wooden bar support in galvanized steel	057/PT	058/PT
Earth base with picket in galvanized steel	057/B	058/B
Intermediate anchoring attachment in galvanized steel	057/IA	058/IA



# ALUMINUM ALLOY EQUIPMENT FOR OVERHEAD TRANSMISSION LINES

050 /...

## ALUMINIUM GIN POLE

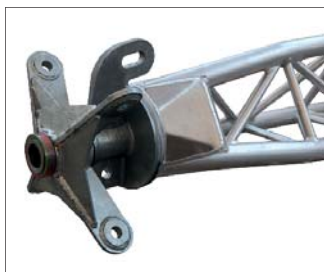
Aluminum gin pole for tower erection and hoisting operations. Modular lattice structures made of TIG welded light Aluminum alloy pipes.

Rated capacity (PN) at 0° inclination ranging from 1000 to 15000 daN.

Complete with swiveling head and base and ground base plate. Available in two configurations: Internal or external rope-passage arrangement.

### On request:

- Different lengths and capacities are available upon request.
- Specialty Steel Gin poles available on request



Swivelling head EXTERNAL rope passage



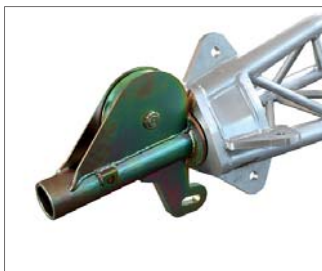
Swivelling base EXTERNAL rope passage



Swivelling base with hook EXTERNAL rope passage



Swivelling head with incorporate sheave for INTERNAL rope passage



Swivelling base with incorporate sheave for INTERNAL rope passage



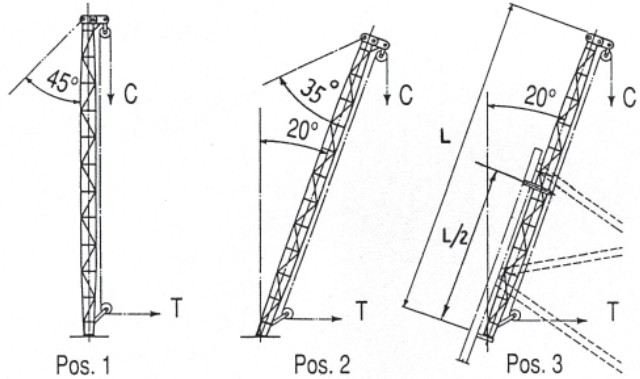
Ground base



## PN = T + C

Rated capacity of each gin-pole varies upon inclination and anchoring position At 0° inclination, it is defined by the formula  $PN=T+C$  where "T" is the pulling force (i.e. applied by the winch machine) and "C" is the weight lifted. In other configurations, rated capacity has to be assessed on a case-by-case basis.

Please refer to this formula and below sketch to identify the correct model of gin pole to suit your requirement and calculating desired lifting capacity.



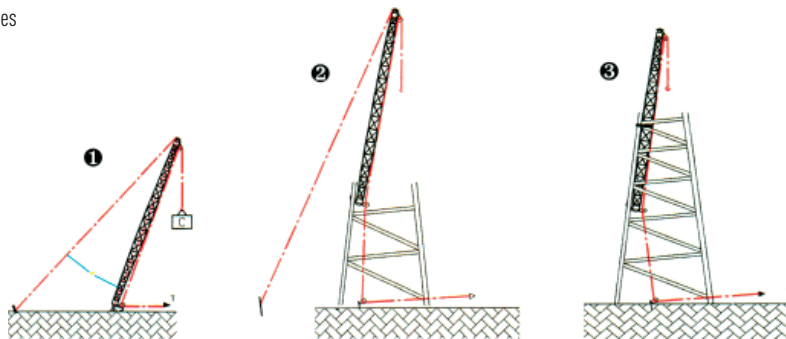
MODEL	CAPACITY "PN" = T+C (daN)			TOTAL LENGTH	STANDARD NUMBERS OF SECTIONS AND LENGTH	WEIGHT EXTERNAL PASSAGE STRUCTURE	WEIGHT INTERNAL PASSAGE STRUCTURE	WEIGHT GROUND BASE
	PN 1 POS. 1 $\alpha=0^\circ$	PN 2 POS. 2 $\alpha=20^\circ$	PN 3 POS. 3 $\alpha=20^\circ$					
050/1/6.2	1000	600	240	6	3+3	43	54	11.5
050/1/8.2	1000	600	240	8	4+4	54	66	
050/1,5/8.2	1500	900	360	8	4+4	65	74	16
050/1,5/10.2	1500	900	360	10	5+5	76	87	
050/1,5/12.3	1500	900	360	12	4+4+4	86	98	16
050/2/8.2	2000	1200	480	8	4+4	67	75	
050/2/10.3	2000	1200	480	10	4+2+4	80	88	16
050/2/12.3	2000	1200	480	12	4+4+4	91	99	
050/3/8.2	3000	1800	720	8	4+4	74	79	25
050/3/12.3	3000	1800	720	12	4+4+4	109	117	
050/3/16.4	3000	1800	720	16	4+4+4+4	146	155	25
050/3/18.3	3000	1800	720	18	6+6+6	162	170	
050/4/10.3	4000	2400	960	10	4+2+4	98	116	25
050/4/12.3	4000	2400	960	12	4+4+4	113	131	
050/4/16.4	4000	2400	960	16	4+4+4+4	166	182	25
050/4/20.4	4000	2400	960	20	5+5+5+5	208	225	
050/5/12.3	5000	3000	1200	12	4+4+4	139	152	35
050/5/16.4	5000	3000	1200	16	4+4+4+4	208	221	
050/5/20.4	5000	3000	1200	20	5+5+5+5	266	278	35
050/7/12.3	7000	4200	1680	12	4+4+4	160	198	
050/7/16.4	7000	4200	1680	16	4+4+4+4	210	245	76
050/7/20.4	7000	4200	1680	20	5+5+5+5	245	283	
050/10/16.4	10000	6000	2400	16	4+4+4+4	241	278	76
050/10/20.4	10000	6000	2400	20	5+5+5+5	291	325	

Model of EXTERNAL wire rope passage Art. 050/... /...

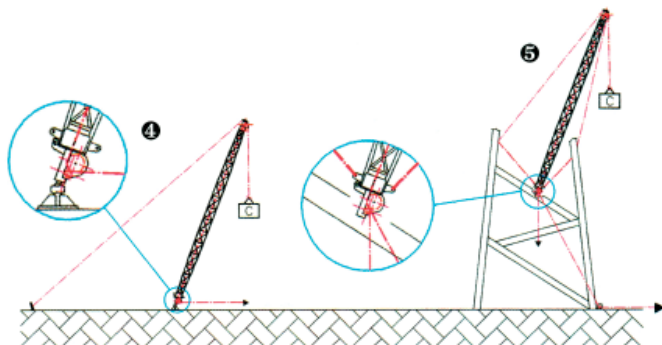
Model of INTERNAL wire rope passage Art. 050/.../... I

# ALUMINUM ALLOY EQUIPMENT FOR OVERHEAD TRANSMISSION LINES

Some "CORRECT" use modalities  
"EXTERNAL" rope passage



Some "CORRECT" use modalities  
"INTERNAL" rope passage



## 032

### “SEAT TYPE” LINE CART / INSPECTION TROLLEY FOR SINGLE CONDUCTOR

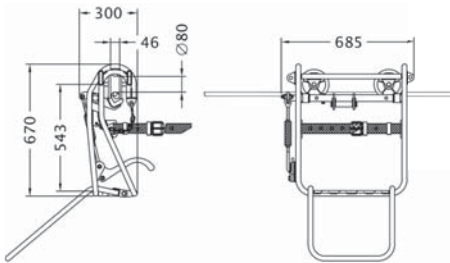
1 lineman towable trolley complete of nylon wheels on ball-bearings, stationary brake, footrest and nylon straps for back support. Made of welded aluminum alloy (TIG SYSTEM).

Payload: 100 daN

Weight: 12 Kg

#### Optional features:

- 1) Counter meter device
- 2) Aluminium wheels



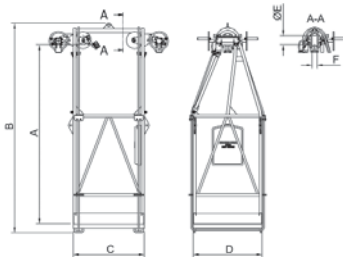
## 035

### LINE CART / INSPECTION TROLLEY FOR SINGLE CONDUCTOR

1 or 2 linemen towable trolley, complete of aluminum wheels on ball-bearings, anti-slip floor, n°2 stationary brakes, safety frame ropes and counter meter device. Made of welded aluminum alloy (TIG SYSTEM).

#### Optional features:

- 1) Dynamic disc brake device
- 2) Nylon wheels
- 3) Earthing device
- 4) "Tailor-made" size available



MODEL	N° LINEMEN	DIMENSIONS (mm)						WEIGHT	PAYLOAD
		A	B	C	D	E	F	kg	daN
035-A	1	1650	1920	650	630	80	46	42	100
035-B	2	1650	1920	1000	630	80	46	46	200

# ALUMINUM ALLOY EQUIPMENT FOR OVERHEAD TRANSMISSION LINES

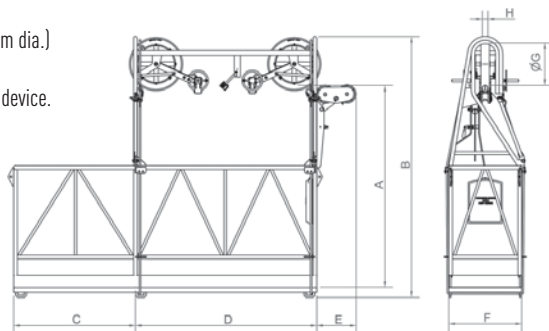
## 035/L

### LINE CART / INSPECTION TROLLEY FOR SINGLE CONDUCTOR

2 linemen towable trolley with large aluminum wheels (350mm dia.) on ball-bearings with Nylon liners, anti-slip floor. n°2 stationary brakes, safety frame ropes and counter meter device. Made of welded Aluminum alloy (TIG SYSTEM). Completed with balancing wheels to allow the operator to work on the cantilever (so called "balcony").

#### Optional features:

- 1) Dynamic disc brake device
- 2) Earthing device
- 3) "Tailor-made" size available



MODEL	DIMENSIONS (mm)								WEIGHT	PAYLOAD
	A	B	C	D	E	F	G	H	kg	daN
035/L-A	1650	2150	1000	1500	330	600	350	48	90	200





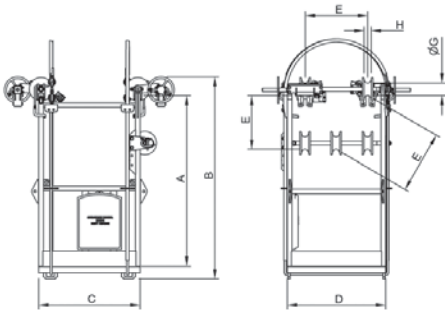
036

## LINE CARTS / INSPECTION TROLLEYS FOR BUNDLED CONDUCTORS

Suitable for 2, 3 or 4 bundled conductors configurations.  
1 lineman towable trolley, with two cross-arms and a positioning bar complete with aluminum wheels on ball-bearings, anti-slip floor n°2 stationary brakes, safety frame ropes and counter-meter device.  
Made of welded aluminum alloy (TIG SYSTEM).

### Optional features:

- 1) Nylon wheels
- 2) Earthing device
- 3) "Tailor-made" size available



MODEL	N° LINEMEN	DIMENSIONS (mm)							WEIGHT kg	PAYLOAD daN	BUNDLE CONFIGURATION
		A	B	C	D	E	G	H			
036-A	1	1095	1300	650	630	400÷457	80	46	43	100	
036-B	1	1095	1300	650	630	400÷457	80	46	49	100	
036-C	1	1095	1300	650	815	400÷600	80	46	50	100	
036-D	1	1095	1300	650	815	400÷600	80	46	53	100	

# ALUMINUM ALLOY EQUIPMENT FOR OVERHEAD TRANSMISSION LINES

## 036/M

### MOTORIZED LINE CARTS / INSPECTION TROLLEYS FOR BUNDLED CONDUCTORS

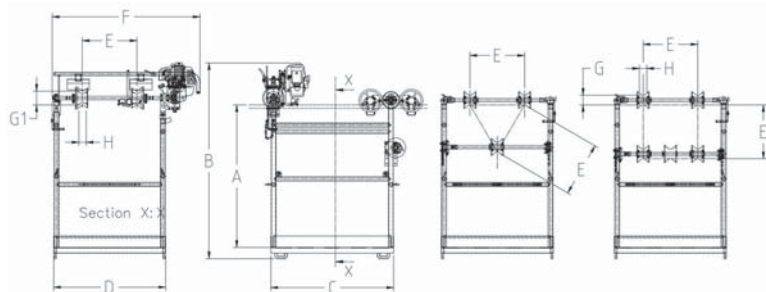
Available for 2,3 or 4 bundled conductors configurations  
 1 linemen with mechanical driven translation system  
 Made in tubular aluminium alloy welded structure (TIG SYSTEM)

#### Features and performances:

- 2 stroke 50cc gasoline engine 2.4 HP (1.8 kW)
- Max speed 20 m/min (both directions)
- Max slope 25% (15°)
- mechanical transmission, reversing drive direction with idle position
- transmission axle with rubber wheels for high adherence
- supporting and positioning cross-arms with aluminum wheels on ball-bearings
- n. 2 stationary brakes, safety frame ropes and counter meter device.

#### Optional features:

- 1) Nylon wheels
- 2) Earthing device
- 3) "Tailor-made" size available



MODEL	N° LINEMEN	DIMENSIONS (mm)							WEIGHT kg	PAYLOAD daN	BUNDLE CONFIGURATION
		A	B	C	D	E	G	H			
036/M-A	1	1042	1450	900	815	400÷500	70	55	67	100	
036/M-B	1	1042	1450	900	815	400÷500	70	55	73	100	
036/M-C	1	1042	1450	900	915	400÷600	70	55	73	100	
036/M-D	1	1042	1450	900	915	400÷600	70	55	79	100	

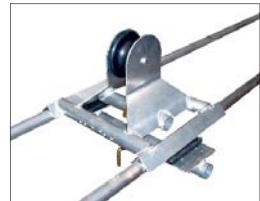
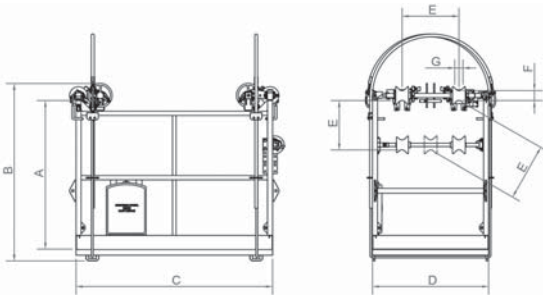
## 034/2

### LINE CARTS / INSPECTION TROLLEYS FOR BUNDLED CONDUCTORS

Suitable for 2,3 or 4 bundled conductors configurations.  
2 linemen towable trolley, with two cross-arms and a positioning bar complete with aluminum wheels on ball-bearings, anti-slip floor n°2 stationary brakes, safety frame ropes and counter-meter device.  
Made of welded aluminum alloy (TIG SYSTEM).

#### Optional features:

- 1) Nylon wheels
- 2) Earthing device
- 3) Hoisting pulley device Art. DT034MDSR-S0000
- 4) "Tailor-made" size available



Art. DT034MDSR-S0000

MODEL	N° LINEMEN	DIMENSIONS (mm)							WEIGHT kg	PAYLOAD daN	BUNDLE CONFIGURATION
		A	B	C	D	E	G	H			
034/2-A	2	1042	1250	1380	915	400÷600	70	55	64	200	
034/2-B	2	1042	1250	1380	915	400÷600	70	55	69	200	
034/2-C	2	1042	1250	1700	915	400÷600	70	55	68	200	
034/2-D	2	1042	1250	1700	915	400÷600	70	55	74	200	

# ALUMINUM ALLOY EQUIPMENT FOR OVERHEAD TRANSMISSION LINES

## 034/M/2

### MOTORIZED LINE CARTS / INSPECTION TROLLEYS FOR BUNDLED CONDUCTORS

Hydraulic driven transmission, aluminum traction wheels with rubber liners.

Suitable for 2,3 or 4 bundled conductors configurations.

2 linemen, with two cross-arms, positioning bar and anti-slip floor. n°2 stationary brakes, safety frame ropes and counter-meter device.

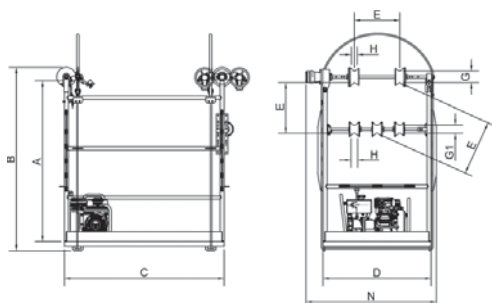
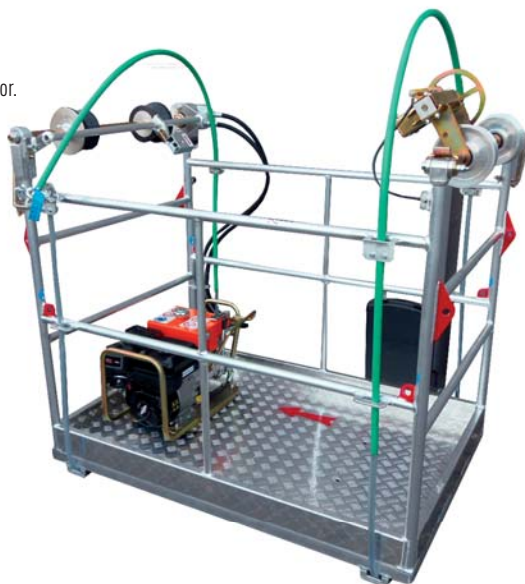
Made of welded aluminum alloy (TIG SYSTEM).

#### Features and performances:

- 4 stroke gasoline engine – 4 hp (2.95 kW)
- Max Speed 30 m/min (both directions)
- Maximum slope 40% (22°)

#### Optional features:

- 1) Nylon wheels
- 2) Earthing device
- 3) Hoisting pulley device Art. DT034MDSR-S0000
- 4) "Tailor-made" size available



Art. DT034MDSR-S0000

MODEL	N° LINEMEN	DIMENSIONS (mm)									WEIGHT kg	PAYLOAD daN	BUNDLE CONFIGURATION
		A	B	C	D	E	G	G1	H	N			
034/M/2-A	2	1075	1300	1380	940	400÷600	100	70	55	1150	116	200	
034/M/2-B	2	1365	1590	1380	940	400÷600	100	70	55	1150	136	200	

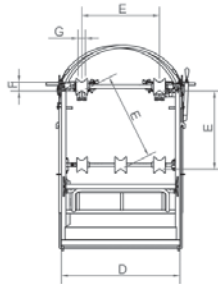
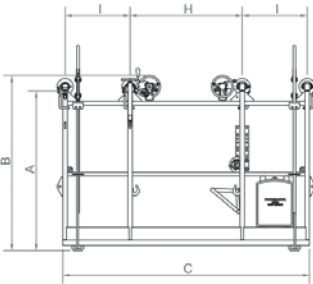
## 034/4

### LINE CARTS / INSPECTION TROLLEYS FOR BUNDLED CONDUCTORS

This model is designed for overpassing existing spacers. Suitable for 2,3 or 4 bundled conductors configurations. 2 linemen towable trolley, with four cross-arms and a positioning bar complete with aluminum wheels on ball-bearings and anti-slip floor. n°2 stationary brakes, safety frame ropes and counter-meter device. Made of welded aluminum alloy (TIG SYSTEM).

#### Optional features:

- 1) Nylon wheels
- 2) Earthing device
- 3) Horizontal rotation of all cross-arms
- 4) Hoisting pulley device
- 5) "Tailor-made" size available



MODEL	N° LINEMEN	DIMENSIONS (mm)									WEIGHT kg	PAYLOAD daN	BUNDLE CONFIGURATION
		A	B	C	D	E	F	G	H	I			
034/4-A	2	1042	1250	1900	915	400÷600	70	55	865	500	105	200	
034/4-B	2	1142	1350	1900	915	400÷600	70	55	865	500	112	200	

# ALUMINUM ALLOY EQUIPMENT FOR OVERHEAD TRANSMISSION LINES

## 034/M/4

### MOTORIZED LINE CARTS / INSPECTION TROLLEYS FOR BUNDLED CONDUCTORS

Hydraulic driven transmission, aluminum traction wheels with rubber liners.

This model is designed for overpassing existing spacers.

Suitable for 2,3 or 4 bundled conductors configurations.

2 linemen, with four cross-arms, positioning bar and anti-slip floor.

n°2 stationary brakes, safety frame ropes and counter-meter device.

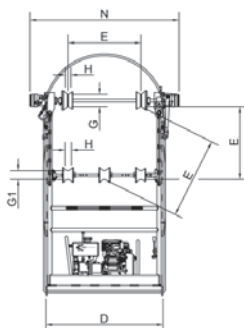
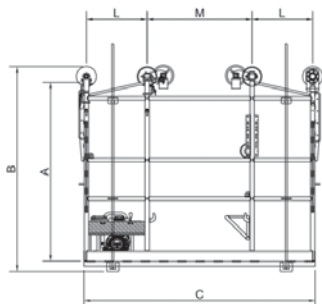
Made of welded aluminum alloy (TIG SYSTEM).

#### Features and performances:

- 4 stroke gasoline engine – 4 hp (2.95 kW)
- Max Speed 30 m/min (both directions)
- Maximum slope 40% (22°)

#### Optional features:

- 1) Nylon wheels
- 2) Earthing device
- 3) Horizontal rotation of all cross-arms
- 4) Hoisting pulley device Art. DT034MDSR-S0000
- 5) "Tailor-made" size available



Art. DT034MDSR-S0000



MODEL	N° LINEMEN	DIMENSIONS (mm)									WEIGHT kg	PAYLOAD daN	BUNDLE CONFIGURATION
		A	B	C	D	E	G	G1	H	N			
034/M/4	2	1470	1700	1900	940	400÷600	100	70	55	12 50	218	200	

## 034/D + 034/E

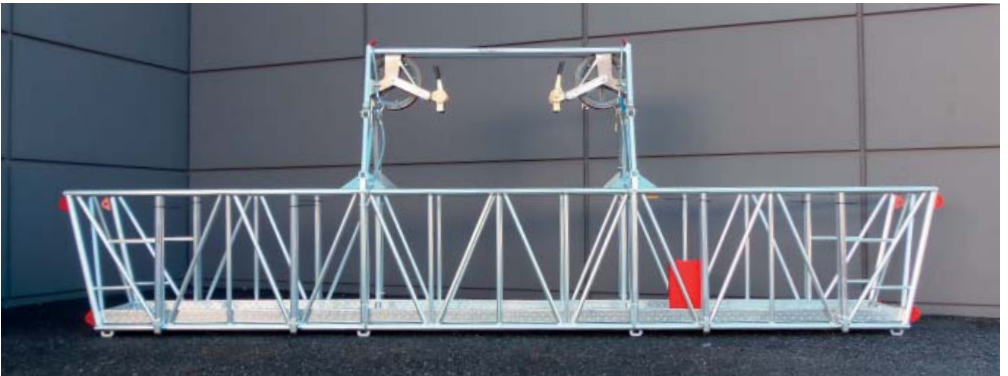
### SPECIAL BUNDLED CONFIGURATIONS AND SPECIAL FEATURES



HEXA CONFIGURATION



QUAD-DIAMOND CONFIGURATION



## BCN 038/...

### BICYCLE TYPE TROLLEY

**Suitable for warning spheres and spacers installation on single or bundled conductor overhead lines.**

Made of TIG welded light Aluminum alloy

Main features:

- Cardan joint transmission system
- Dynamic Negative brake system
- Low transmission ratio to reduce effort on pedals
- Maximum (recommended) span inclination up to 30%
- Adjustable seat
- High tenacity nylon sheaves with "adiprene" groove lining on ball-bearing
- Stationary brake device
- Adjustable spacing distance: 400, 457, and 500 mm for Twin and Quad bundle configuration 400, (457, 500 mm on request) for Triple bundle configuration
- Counter meter device

### Optional for all models:

- Motor drive device  
Mod. BCN 038/...M
- 2 stroke engine 48 cc 2.4 HP
- Speed 0 to 20 m/1'
- Inclination up to 25% max.
- Idle device for pedalling option
- Weight 12 Kg.  
to add the standard models



Dynamic negative brake and counter-meter device



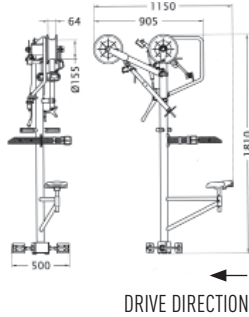
Stationary brake device



### 038/1

#### BICYCLE FOR SINGLE CONDUCTOR

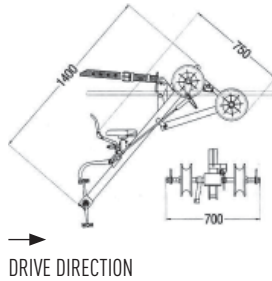
Weight: 25 Kg.  
Payload 100 daN.



### 038/2

#### BICYCLE FOR TWIN BUNDLE CONDUCTORS

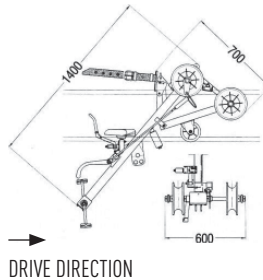
Weight: 32 Kg.  
Payload 100 daN.



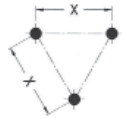
### 038/3

#### BICYCLE FOR TRIPLE BUNDLE CONDUCTORS

Weight: 38 Kg.  
Payload 100 daN.



X = to be specified  
(400 to 500  
admitted)



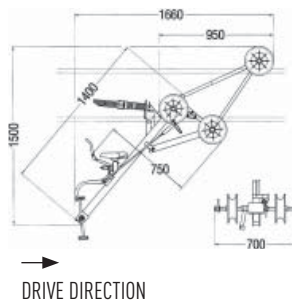
### 038/4

#### BICYCLE FOR QUAD BUNDLE CONDUCTORS

Weight: 42 Kg.  
Payload 100 daN.

#### Optional:

Device for transform a twin model  
in Quad model Art. BCN 038/2-4



## 038/1C

### ALUMINUM ALLOY EQUIPMENT FOR OVERHEAD TRANSMISSION LINES

**Cart version, suitable for warning spheres installation or inspection on single conductor overhead lines.**

Made of TIG welded light Aluminum alloy

Main features:

- Cardan joint transmission system
- Negative brake system
- Stationary brake system
- Low transmission ratio to reduce effort on pedals
- Maximum (recommended) span inclination up to 30%
- Adjustable seat
- High tenacity nylon sheaves with "adiprene" groove lining on ball-bearing
- Counter meter device



## VARIOUS APPLICATION VIEW



**Wherever your  
needs take you...**





**...You can go  
with us**

