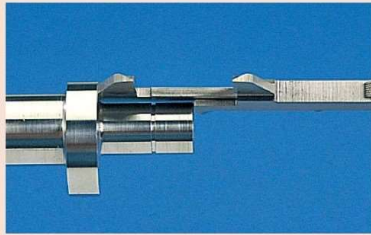
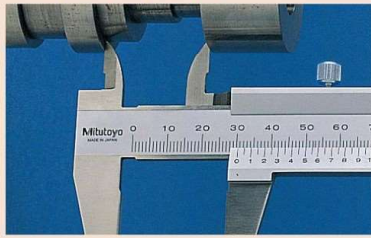
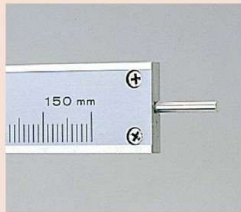


**Vernier Caliper
SERIES 530 — Standard model**

Measurement example



Round depth bar type



530-102

Carbide-tipped jaws for outside measurement



530-320

- Stepped graduation face prevents dust ingress between the main scale and slider.
- The small vernier face angle (14°) provides easy reading.
- Can measure steps, since the end faces of the beam and slider are the zero reference point (measuring face). Standard calipers allow four types of measurement, i.e. outside, inside, depth, and step.
- Carbide-tipped jaw calipers are optimal for rough finished parts, castings, grinding stones, etc.



530-101

SPECIFICATIONS

Metric					
Order No.	Range (mm)	Maximum permissible error (mm)*1 • E _{MPE} (outside measurement) • S _{MPE} (inside measurement)	Depth bar	Graduation (mm)	Remarks
530-101	0 - 150	±0.05	Blade	0.05	—
530-122	0 - 150	±0.03		0.02	High accuracy model
530-108	0 - 200	±0.05		0.05	—
530-123	0 - 200	±0.03		0.02	High accuracy model
530-109	0 - 300	±0.08	Blade	0.05	—
530-124	0 - 300	±0.04		0.02	High accuracy model

Order No.	Range (mm)	Maximum permissible error (mm)*2		Depth bar	Graduation (mm)	Remarks
		E _{MPE}	S _{MPE}			
530-100	0 - 100	±0.05	±0.07	ø1.9 mm rod	0.05	—
530-102	0 - 100	±0.05	±0.07			—
530-320	0 - 150	±0.05	±0.07	Blade	0.05	Carbide-tipped jaws for outside measurement
530-335	0 - 150	±0.05	±0.07			Carbide-tipped jaws for outside and inside measurement
530-321	0 - 200	±0.05	±0.07			Carbide-tipped jaws for outside measurement
530-322	0 - 300	±0.08	±0.10	—	—	Carbide-tipped jaws for outside measurement
530-501	0 - 600	±0.10	±0.12			—
530-502	0 - 1000	±0.15	±0.17			—

Metric / Inch with metric/inch double scale						
Order No.	Range	Maximum permissible error		Depth bar	Graduation	Remarks
		E _{MPE}	S _{MPE}			
530-104	0 - 150 mm / 0 - 6 in	±0.05 mm / ±0.5/128 in	±0.07 mm / ±0.5/128 in	Blade	0.05 mm (1/128 in)	—
530-316	0 - 150 mm / 0 - 6 in				0.02 mm (0.001 in)	Clamping screw below the slider
530-312	0 - 200 mm / 0 - 8 in	0.05 mm (1/128 in)	High accuracy model: ±0.03 mm			
530-114	0 - 200 mm / 0 - 8 in	0.02 mm (0.001 in)	—			
530-118	0 - 300 mm / 0 - 12 in	0.05 mm (1/128 in)	High accuracy model: ±0.03 mm			
530-115	0 - 300 mm / 0 - 12 in	±0.08 mm / ±0.5/128 in	±0.010 mm / ±0.5/128 in		0.02 mm (0.001 in)	High accuracy model: ±0.04 mm

Inch with inch/inch double scale						
Order No.	Range (in)	Maximum permissible error (in)		Depth bar	Graduation (in)	Remarks
		E _{MPE}	S _{MPE}			
530-105	0 - 6	±0.5/128	±0.5/128	Blade	0.001	—
530-116	0 - 8	±0.5/128	±0.5/128			

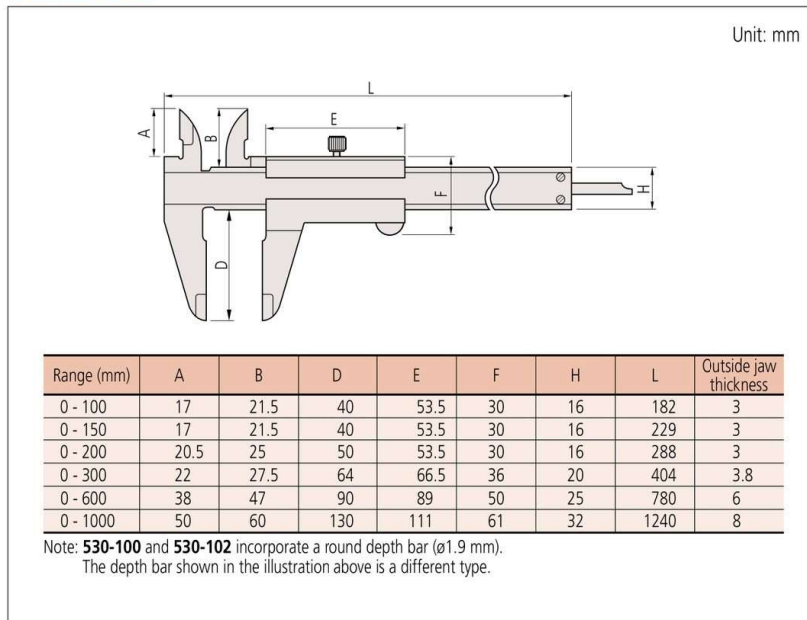
*1 Partial Measuring Face Contact Error, E_{MPE} and Shift Error, S_{MPE} are terms (notations) used in JIS B 7507: 2016, revised based on ISO 13385-1: 2011. Refer to page D-45 for details.

*2 Partial Surface Contact Error, E_{MPE} and Shift Error, S_{MPE} are terms (notations) used in ISO 13385-1:2019.

Calipers

Vernier Caliper SERIES 530 — Standard model

DIMENSIONS



D