

EQUIPMENT FOR OVERHEAD CONDUCTORS STRINGING

026RBTV6

STRINGING ROLLER

Suitable to be used with remote controlled pull/drag unit model 101RBT to replace existing earth wire (or conductor).

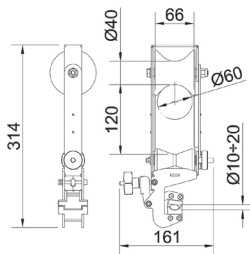
Pulling rope diameter from 10 to 20 mm.

Nylon sheaves on ball-bearings, steel frame with side protections.

Working load: 200 daN

Breaking load: 1000 daN

Weight: 1,4 kg



026RBT2

STRINGING ROLLER

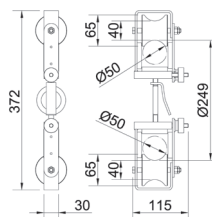
Suitable to be used with remote controlled pull/drag unit model 101RBT to replace existing earth wire (or conductor).

Nylon sheaves on ball-bearings, galvanized steel frame with nylon protection plates.

Working load: 200 daN

Breaking load: 1000 daN

Weight: 1,8 kg



026RBTV2

STRINGING ROLLER

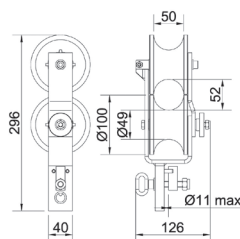
Suitable to be used with remote controlled pull/drag unit model 101RBT to replace existing earth wire (or conductor).

Self-lubricating nylon sheaves and aluminum alloy frame.

Working load: 100 daN

Breaking load: 500 daN

Weight: 0,95 kg



026RBTV8

STRINGING ROLLER

Suitable to be used with remote controlled pull/drag unit model 101RBT to replace existing earth wire (or conductor).

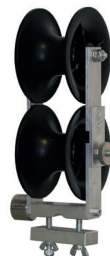
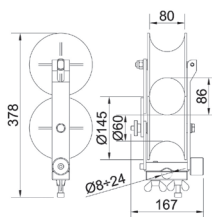
Pulling rope diameter from 8 to 24 mm.

Self-lubricating nylon sheaves and aluminum alloy frame.

Working load: 200 daN

Breaking load: 1000 daN

Weight: 2,3 kg



FR-RBT

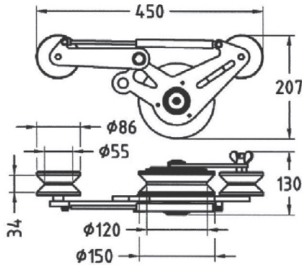
BREAKING DEVICE

This device is positioned behind the supporting-rollers to keep the desired clearance between the rollers.

Aluminum alloy frame, rubber-lined aluminum sheaves and nylon sheaves on ball-bearings.

Working load: 150 daN

Weight: 4 kg



101/REC

RECOVERING DEVICE

Designed to recover the remote-controlled pull/drag unit when operating in steep incline span conditions.

Towing system by rope, with removable counterweights.

Aluminum alloy frame, aluminum sheaves on ball bearings.

Supplied with 3 galvanized steel counterweights (8,8 kg each).

Working load: 150 daN

Weight: 8,3 kg [counterweights excluded]

