



HIREBOOK 2025

Sales Service Calibration Hire

HTC has been creating specialised tooling solutions for New Zealand industry for over 40 years.

Specialists in 700 bar hydraulics, HTC offers more than 35 years of experience in the supply and application of high pressure hydraulic equipment. HTC sources and supplies solution-based tools and equipment for electrical contracting, railway, construction, engineering and drainage industries.

With branches in Auckland and Christchurch, HTC offers equipment sales, service, repair, calibration and tool hire.

“We are passionate about making the hard jobs easier for our customers. Call us today to see how we can help with your next project.”

Robb Huskinson
Owner/Director

HTC's Promise to You

01

We do not charge for days in transit.

02

24 Hour call out service.

03

Try innovations before purchasing.

04

Technical Solutions to keep your job running.

05

Contract rates, talk to us for the right tooling for your project.

06

We remember when your gear needs servicing and send you reminder .letters.

07

Overnight courier service available to almost anywhere in NZ.

08

More options off the shelf than any other supplier in our industry.





HTC Hire Rates

You can find 4 hour and 24 hour hire rates for all our tools listed on our website.

When you hire a tool for over 7 days our team will calculate a discounted rate based on the length of the hire. HTC hire rates usually reduce as the term of the hire increases. Once the hire period rolls into a second month, the deal can get even better.

We understand that you don't always know how long a job is going to take. Talk to our team about projected project times and actual day's usage of equipment. At HTC we aim to accommodate days when tools are not used by offering stand by rates and contract rates for long term hire. We don't usually charge for transit time for out of town customers.

HTC Damage Waiver

HTC Damage Waiver aims to reduce a client's financial liability during the hire of HTC's equipment. Which means it can help you avoid meeting the cost of unexpected damage of hire equipment.

HTC Damage Waiver is an agreement to cover 'loss of use'. It covers you against the cost of repair for accidental damage to equipment, replacement value, salvage costs & hire charges incurred during repair/replacement if the equipment is damaged.

It's important to know Damage Waiver does not cover against loss, theft or malicious or negligent damage. The client is responsible for the correct use, maintenance and safekeeping of HTC's equipment during the hire period.

Damage Waiver is a non-refundable fee of 10% of the hire charges for the equipment and billed on the hire invoice in addition to your hire charges. The Damage Waiver Excess is limited to no more than \$1000 for accidental loss or damage.



HTC Terms & Conditions apply. Photographs are for illustrative purposes only and may not represent actual products. We reserve the right to correct errors.



HTC Parts & Services

HTC's in-house specialist fitters are trained to provide fast, reliable and economic repairs and scheduled maintenance for your hydraulic tools and equipment.

Common parts are stocked for most products we hire and sell, which means you get your gear back quicker. Worried about keeping your current projects progressing while your gear is being serviced?

HTC offers discount hire rates when your own tools and equipment are being serviced by our specialist fitters.

HTC also supply seal kits, hoses, couplers, gauges, hydraulic fluids, coolants, cutters, punches, compression dies and a large range of other spares and accessories.

The skillsets of HTC's Specialist Fitters go beyond repairs and scheduled maintenance. Our team can also create bespoke engineering solutions for your projects.

"Outstanding service. Cannot fault it. Product exactly what I was after. Very quick delivery. Would not hesitate to deal with again. I highly recommend this firm to everyone."

Penelope G.
Client





Index

Air Lifting Bags	8	Hydraulic Hoses - Adaptors	
Anchor Bolt & Rebar Testing		Low Pressure Hydraulic	
Bevel Machines	9	Air Hoses	
Breakers & Tampers		Hydraulic Manifolds and Valving	
Cable Cutters	10	Bottle Jacks / Jacks	19
Cable Pulling		Loadskates	20
Remote Head Crimping	11	Low Pressure Equipment	
Hand Crimping Tool		Submersible/Trash Pumps	
Battery Powered Crimping		Nut Cutters/Splitters	
Pipe Manhole Cover	12	Pipe Threading	21
Concrete Tools		Pipe Sealing & Testing	
Battery Powered Crimping	13	Pipe Joint Tester	23
Crimping Die Sets		Pipe Bending	24
Drills/Rotabroaches	15	Pipe Work Accessories	
Dynamometers/Scales/		Pole Jacking	
Tension Meters/Load Cells		Power Tools	25
Extension Leads	16	Pullers	
Flange Spreading Equipment		Electric Pumps	27
Gas Detector		Hand Pumps	
Gauges		Petrol Hydraulic Pumps	
Lever Hoists		Hydrostatic Test Pumps	
Electric Hoists	17	Syncmaster	28
Gantry Hoists		Pneumatic 6-7 Bar Input 700 Bar	30
Hoses	18	Output Pumps	

Hydraulic Pump – Manual 0.6L		Shims	
Ultra High Pressure		Snakes	
Plate Steel Punches		Site Support	
Switchboard/Chassis Punches		Stressing Jack Mono	
Rail Gear	31	Bolting	38
Hollow Centre Rams	33	Sockets	
4-10 Tonne Rams		Torque Wrench	39
20-30 Tonne Rams		Electric Torque Multipliers - Tone	42
50-500 Tonne Rams	34	Manual Torque Multipliers	
Pull Rams		Manual Torque Wrenches	
Locking Collar Rams		Battery Impact Wrenches	43
Ram Attachments	35	Pneumatic Impact Wrenches	
Ram Wedge		Electric Impact Wrenches	
Rebar Benders		Transmission Jacks	
Rebar Cutters		Electrical Winches	
Recycling Gear	36	Manual Winches	

“We are passionate about making the hard jobs easier for our customers. Call us today to see how we can help with your next project.”

Robb Huskinson
Owner/Director



Air Lifting Bags

Durapac KPL Series Kevlar Power Lift Airbags

Metal parts are solid brass. The bags are thin, light and simple to use. Bags can be stacked safely on top of each other thanks to the special dimpled surface. Eleven models of air bag are available with lifting capacities ranging from one to 64 ton.



Anchor Bolt & Rebar Testing

Hydrajaw M2000 Anchor Bolt Tester Upto 25Kn With Analogue Gauge

The Hydrajaws M2000 PRO Tester Kit anchor tester contains a universal set of adaptors enabling a comprehensive range of fixings and safety-critical applications, up to a maximum tensile load of 25kN to be tested.



Bevel Machines

EKF 450.3 Plate Chamfering Machine

The EKF 450.3 Plate Chamfering Machine is designed to bevel 45° weld seams on steel, stainless, nonferrous metals, brass, and plastics.



Bevel Machines

SKF 25 Portable Beveling Machine

The SKF 25 portable beveling machine is designed for precise weld preparation with chamfers up to 15 mm and adjustable angles from 15–60° on steel, stainless steel, aluminum, and nonferrous metals.



Breakers & Tampers



Red Hawk Petrol Tamper

This multi-purpose tool is used extensively in the rail industry for tamping ballast/ties.



KV19 Hydraulic Breaker

Professional, compact hydraulic breaker for efficient concrete, rock, and asphalt demolition with reduced operator fatigue.



MH1810 Electric Breaker

For precision depth control and straight line cutting from a standing position.

Anchor Bolt & Rebar Testing

Hydrajaw M35+ Anchor Bolt Tester Upto 65kN With Digital Gauge

The Hydrajaws M35+ introduces cutting-edge 'Easi-Effort' technology, setting a new standard in the efficiency of applying torque for mechanical anchor pull testing.



Anchor Bolt & Rebar Testing

Hydrajaw M2008 Anchor Bolt Tester Upto 145kN With Digital Gauge

The Hydrajaws M2008 Heavy Duty Tester Kit features a built-in digital gauge for testing a wide range of anchors. Its hollow centre supports barrel and wedge testing of deformed rebar, delivering portable proof load testing up to 145 kN.



Breakers & Tampers

TA54103 Hydraulic Pole Tamper

Ideal for soil compaction around utility poles, signs and fence posts.



Breakers & Tampers

Ballast Tamper RCT 1500 P

Ideal for efficient ballast tamping and compaction in railway maintenance applications.



Cable Cutters

P100A Hydraulic Remote Head Cutter 100mm Max

Cuts quick & easily through non-ferrous cables. This cutter requires a hydraulic pump and hose to operate. The pump can be either manual, electric, or pneumatic.



SPA55 ACSR Hydraulic Head Cable Cutter 50mm Max

Useful all-round cutter for cables, wire ropes & ACSR. Lightweight, portable and powerful. This cutter requires a hydraulic pump and hose to operate.



S550 ACSR 54mm Hand Cable Cutter



CC75 75mm Hydraulic Cable Cutter Head



REC S540 Battery Operated Cable Cutter

Cable Pulling

Portable Reel Buck

This innovative reel buck is engineered for portability, ease of use, and durability, making it an ideal choice for various job site applications.



Scissor Lift Stands

A heavy-duty cable-drum jack designed for lifting and supporting large reels



Cable Sock

For utility, triplex, fibre optic, low voltage and high cable pulling



Cable Grip

Designed for pulling bare copper cable, wire rope, trolley cable and messenger



Cable Roller

Designed for pulling bare copper cable, wire rope, trolley cable and messenger



Cable Grip

Helps eliminate winding and tangling of rope and cable during pull.



Drum Roller Ramp

The only ramps on the market with a safety bar to ensure the drum can't roll.

Remote Head Crimping

60 Tonne Compression Tool 700 Bar Single Acting

Used for applying compression fittings to copper, aluminium, ACSR and various other cables and conductors.



12 Tonne Compression Tool 700 Bar Single Acting

22 Tonne Compression Tool 700 Bar Single Acting

25 Tonne Compression Tool 700 Bar Single Acting

60 Tonne Compression Tool 700 Bar Single Acting

100 Tonne Compression Tool 700 Bar Single Acting

Hand Crimping Tool

12 Tonne Hand Compression Tool

2 tonne compression tools use standard 12 tonne dies for applying compression fittings to copper, aluminium, ACSR and various other cables and conductors.

This tool was designed for the electrical contractor and electric utility lineman who is confronted with larger cable diameter and larger connectors.



Battery Powered Crimping

12 Tonne Battery Crimp Tool Includes Battery & Charger

Battery operated 12 tonne compression tools use standard 12 tonne dies for applying compression fittings to copper, aluminium, ACSR and various other cables and conductors.



15 Tonne Battery Crimp Tool Includes Battery & Charger

Battery operated 15 tonne compression tools use dies for applying compression fittings to copper, aluminium, ACSR and various other cables and conductors. This tool uses either specific 15 tonne dies or can use 12 tonne dies with an adaptor.



Pipe Manhole Cover

Wheeled Folding Lever

Versatile wheeled folding lever, designed for use with DOA cover lifters and their accessories in demanding operations and opening of heavy manhole covers with minimum effort and maximum safety.



CL11 Curved Base Magnetic Manhole

Universal magnetic lifter with curved base to ensure the best magnetic adhesion on the circumference of circular manhole covers also with "filling" cast iron frame and in asphalt / stone / cement with central metal disc.

Battery Powered Crimping

Izumi S7G-C510M 12 Tonne Battery Hydraulic Crimper

Includes battery and charger

Izumi S7L-610 15 Tonne Battery Hydraulic Crimper

Includes battery and charger



Crimping Die Sets



12 Tonne Die Set



25 Tonne Die Set



60 Tonne Die Set



100 Tonne Die Set

Concrete Tools

DC22 - Concrete Saw with SC40 Trolley

DC20 and DC22 cut off saws with disc capacity 450 and 500 mm.

For cutting reinforced concrete asphalt and building materials in general.



Izumi S7G-C510M 12 Tonne Battery Hydraulic Crimper

Powerful magnets to be used in combination with folding levers APS90 – APS80, with trolley LK70, with mini excavators and cranes, for lifting very heavy ferrous manhole covers.

Pacific Lifter Trolley 500Kg PST500

Powerful magnets to be used in combination with folding levers APS90 – APS80, with trolley LK70, with mini excavators and cranes, for lifting very heavy ferrous manhole covers.



Crimping Dies

Code	Tonnes	Common Size (mm ²)	Type	A/F Size (mm)
38-XXX CU Flat	12/22	16/220	Flexible	14/17
38-63-CU	12/22	16	Copper	6.3
38-77-CU	12/22	16/25	Copper	7.7
38-92-CU	12/22	35	Copper	9.2
38-104-CU	12/22	50	Copper	10.4
38-115-CU	12/22	70	Copper	11.5
38-142-CU	12/22	95	Copper	14.2
38-165-CU	12/22	120	Copper	16.5
38-183-CU	12/22	150	Copper	18.3
38-200-CU	12/22	185	Copper	20.0
38-231-CU	12/22	240	Copper	23.1
38-260-CU	12/22	300	Copper	26.0
38-132-AL	12/22	50/70	Aluminum	13.2
38-173-AL	12/22	95/120	Aluminum	17.3
38-220-AL	12/22	150/185	Aluminum	22.0
38-284-AL	12/22	240/300	Aluminum	28.4
CDA-3	12/22	25/35	Aluminum	12.4
CDA-4	12/22	35/50	Aluminum	13.75
CDA-5	12/22	70/120	Aluminum	17.9
CDA-6	12/22	95/150	Aluminum	22.0
CDA-7	12/22	150/185	Aluminum	25.4
CDA-8	12/22	240	Aluminum	28.2
CDA-9	12/22	300/400	Aluminum	32.3
CDS-8	12/22	150	Steel	12.7
22T/400	22	400	Copper	18.1
22T/500	22	500	Copper	31.0
40-25 Flat	60	N/A	Flexible	N/A
40-185-CU	60	150	Copper	18.5
40-231-CU	60	240	Copper	23.1
40-260-CU	60	15-/300	Copper	26.0
40-281-CU	60	400	Copper	28.1
40-310-CU	60	500	Copper	21.0
40-340-CU	60	1/2 Hex/240	Flexible	34.0
40-370-CU	60	630	Copper	37.0
40-410-CU	60	1/2 Hex/400	Flexible	41.0
40-220-AL	60	185	Aluminium	22.0
40-283-AL	60	300	Aluminium	28.3
40-390-AL	60	400/500	Aluminium	39.0
40-432-AL	60	630	Aluminium	43.2
DS7	60	150	Steel	10.11
DS8	60	240	Steel	12.70
DS9	60	300	Steel	15.11
DS10	60	400	Steel	16.05
DA7	60	150/185	Aluminium	25.43
DA8	60	240	Aluminium	28.19
DA9	60	300/400	Aluminium	32.33
DA10	60	400	Aluminium	36.22
DA11	60	500	Aluminium	40.21
DA12	60	630	Aluminium	45.72
DA7-100	100	150/85	Aluminium	25.43
DA8-100	100	240	Aluminium	28.19

Code	Tonnes	Common Size (mm ²)	Type	A/F Size (mm)
DA10-100	100	400	Aluminium	36.22
DA11-100	100	500	Aluminium	40.21
DS7-100	100	150	Steel	10.11
DS8-100	100	240	Steel	12.70
DS9-100	100	300	Steel	15.11
DS10-100	100	400	Steel	16.05
DA10/10W	100	400	Aluminium	36.22
DA/100W	100	630	Aluminium	45.72
DA11/100W	100	500	Aluminium	40.21
DS10/100W	100	400	Steel	16.05
DA14/100W	100	ACSR/CHUKAR	Aluminium	53.87
40-400 AL	60	Oxygen	Aluminium	40.0
40-345 AL	60	Nitrogen	Aluminium	34.5
40-445AL	60	Selenium	Aluminium	44.5
40-475 AL	60	Sulphur	Aluminium	47.5
40-285 AL	60	Neon	Aluminium	28.5
475AL/100W	100	Sulphur	Aluminium	47.5
445AL/100W	100	Selenium	Aluminium	44.5
345AL/100W	100	Nitrogen	Aluminium	34.5

AAAC Crimping Dies

Code	Description	Type	A/F Size (mm)
40-400 AL	60 Oxygen	Aluminium	40.40
40-345 AL	60 Nitrogen	Aluminium	34.5
40-445 AL	60 Selenium	Aluminium	44.5
40-475 AL	60 Sulphur	Aluminium	47.5
40-285 AL	60 Neon	Aluminium	28.5
100-475 AL	100 Sulphur	Aluminium	47.5

Die Adaptors

Code	Description	Shape
25T-12T	25 - 12 Tonne Die Adaptor	Round
EP60S-12	60 - 12 Tonne Die adaptor	Round
EP100W-60	100 - 60 Tonne Die adaptor	Round
HZ100-60	100 - 60 Tonne Die adaptor	Square

Wire Rope Dies

Code	Description	Shape
R-12A	Huskie Wire Rope Die	1/2" A
R-14AC	Huskie Wire Rope Die	1/4" AC
R-18AC	Huskie Wire Rope Die	1/8" AC
R-316AC	Huskie Wire Rope Die	3/16" AC
R-38-CUT	12 Tonne Cutting Die	
R-38AC	Huskie Wire Rope Die	3/8" AC
R-51058	2 Tonne Grip 5-16mm Wire Rope	
R-516AC	Huskie Wire Rope Die	5/16" AC
R-716A12C	Huskie Wire Rope Die	7/16" AC
R-716C	Huskie Wire Rope Die	7/16" C

Drills/Rotabroaches

Small Mag Base Drill

Medium Mag Base Drill

Large Mag Base Drill

Extra Large Mag Base drills up to 100mm

Small Lightweight/Low Height Mag Drill

Medium Lightweight/Low Height Mag Drill

Annular Cutters from 12mm - 65mm

Battery Mag based Drill

Pipe mag based Drill

Automatic Feed Drill



Battery

Lightweight/Low Height



Large Mag Base Drill

Medium Mag Base Drill



Dillon Quickcheck | Digital Tension Meter

Ideal for cable guardrails, guy lines and overhead wires nothing comes close to the absolute simplicity of design and accuracy of Dillon Quick-Check tension meters.

Dynamometers/Scales/ Tension Meters/Load Cells



Compression Load Cell

50T capacity
High accuracy
10kg graduation
Unit weight 12kg



Digital/Load Tension Meter

10T capacity
0.2% of capacity accuracy
10kg graduation
Unit weight 7kg



Analogue

Available in sizes 5kN up to 100kN.
Accuracy +/- 3% of full scale.
Compact, lightweight, rugged construction.

Extension Leads

Heavy Duty Power Extension

Range of power leads both single and three phase.



Gas Detector

MGT-P Four Gas Monitor (Portable Gas Detector)

A three sensor/four channel multi gas detector.



Gauges

0.8 Tonne Lever Hoist

1.6 Tonne Lever Hoist

3 Tonne Lever Hoist

6.3 Tonne Lever Hoist



Flange Spreading Equipment

Hydraulic Flange Spreader Kit

includes: 2 x Hydraulic Spreaders, 2 x Hoses, Hydraulic Pump, 2 x 1000 Bar Gauges, 2 x Step Wedges, 2 x Step Chocks



Hydraulic Fixed Flange Alignment & Rotational Tool

Includes: 2 x Hydraulic Alignment Tools, Hydraulic Pump, Hose, 1000 Bar Gauge & Ratchet Strop



Lever Hoists

0.8 Tonne Lever Hoist

1.6 Tonne Lever Hoist

3 Tonne Lever Hoist

6.3 Tonne Lever Hoist



Electric Hoists

1 Tonne Chain Block 6m Lift

2 Tonne Chain Block 6m Lift

3 Tonne Chain Block 6m Lift

5 Tonne Chain Block 6m Lift

10 Tonne Chain Block 6M Lift

Universal Beam Trolley 1.5 Tonne 74-192mm

Universal Beam Trolley 3 Tonne 100-205mm

Girder Clamps



0800 48 2000
ALSO AVAILABLE FOR PURCHASE

Electric Hoists

G-smartrac endless rope winch, 300kg or 600kg

500kg Electric Chain Hoist 6m Drop 230V

1000kg Electric Chain Hoist 6m lift, 230v

2000kg Electric Chain Hoist 6m lift, 230v

3000kg Electric Chain Hoist 6m lift, 230v



0800 48 2000
ALSO AVAILABLE FOR PURCHASE

Gantry Hoists

Portable Gantry - 500KG

Portable Gantry - 200kg

Portable Gantry - 3000kg

Portable Gantry - 5000kg

Aluminium Tripod with Winch



Hoses

Hydraulic 700 Bar Hoses

Wide range of hoses available.



Hydraulic Hoses - Adaptors

Hi Flo Adaptor

Allows for different couple brands with the same capacities to be inter connected.



Low Pressure Hydraulic

5m Low Pressure Return

15m Twin Hose & Brunning

30m Twin Hose & Brunning



Air Hoses

Air Hoses

Various flow capacities and lengths available



Hydraulic Manifolds and Valving

Check Valves with Bypass

Needle Valves

Valved Manifolds 2 Port

Valved Manifolds 4 Port

Valved Manifolds 6 Port

Y-Branch With ROC-13



Bottle Jacks / Jacks

Durapac DBJ Standard Hydraulic Bottle Jacks

The DBJ-Series Bottle Jacks represent a top-tier selection tailored perfectly for a wide array of industrial lifting and pushing tasks. Ranging from 10 to 20 tons, these models include an added screw extension, and the majority are versatile for use in both vertical and horizontal orientations.



Bottle Jacks / Jacks

Durapac DRJ-10 Hydraulic Track Jack

The DRJ-10 Rail Jack is excellently tailored for aligning, gauging, and lifting rail or sleepers. Crafted with a forged aluminum upright base, this jack, with a capacity of 10 tons*, is engineered to be sturdy, lightweight, and minimize the chances of operator injury.



Check Valves with Bypass

Needle Valves

Valved Manifolds 2 Port

Valved Manifolds 4 Port

Loadskates

- 5 Tonne Loadskate**
- 12.5 Tonne Loadskate**
- 40 Tonne Loadskate Set (4 x 10 Tonne)**
- 5 Tonne Handle**
- 5 Tonne Turntable**
- 12.5 Tonne Handle**
- 12.5 Tonne Turntable**



Pipe Threading

Wide range of threading machines, table top and hand held.

Plenty of accessories can also be provided, including pipe stand

Roll Groover attachments



Low Pressure Equipment

- Underwater Chainsaw**
- Concrete Saw**
- Petrol Powered LP Power Unit**
- Low Pressure Hydraulic Pumps**
- Underwater Grinder**
- Pole Tamper**
- Hydraulic Breaker**



0800 48 2000
ALSO AVAILABLE FOR PURCHASE

Pipe Sealing & Testing

- Sava Sealing Plug 70-150mm 2.5 Bar**
- Sava Sealing Plug 100-200mm 2.5 Bar**
- Sava Sealing Plug 150-300mm 2.5 Bar**
- Sava Sealing Plug 300-525mm 2.5 Bar**
- Sava Sealing Plug 350-600mm 2.5 Bar**
- Sava Sealing Plug 375- 750mm 2.5 Bar**
- Sava Sealing Plug 500-800mm 2.5 Bar**
- Sava Sealing Plug 500-1000mm 1.5 Bar**
- Sava Sealing Plug 600-1200mm 1.5 Bar**
- Sava Sealing Plug 750-1500mm (1.0 bar)**
- Sava Test Plug 70-150mm with 1/2" port**
- Sava Test Plug 150-300mm with 1" port**
- Sava Test Plug 300-525mm with 1" port**
- Sava Test Plug 500-800mm with 2" port**
- Sava Test Plug 500-1000mm with 2" port**
- Sava Test Plug 600-1200mm with 4" port**
- Sava Test Plug 750 - 1500mm 4" Duct**
- Sava 1.5 Bar Controller**
- Sava 2.5 Bar Controller**



- Sava 10m Air Hose**
- Sava Testing bag 350-600mm Vp 6" bypass**
- Test Gauge for Pipeline Pressure Testing (20-60kpa)**
- Sewer line smoke testers**
- 3" Bypass Plug 150mm - 250mm**
- * Pipe sealing gear incurs a sanitising charge**



Submersible/Trash Pumps

For other models, enquire now for purchase or hire availability

0800 48 2000
ALSO AVAILABLE FOR PURCHASE

Nut Cutters/Splitters

Hydraulic Nut Splitter
Capacities of 13mm to 57mm+
Nut sizes

0800 48 2000
ALSO AVAILABLE FOR PURCHASE





Pipe Sealing & Testing



Hurco Smoke Tester

The Hurco Pipeline Smoker leak detector with laboratory tested safe LiquiSmoke is the fastest and most economical way of locating leaks in sewer mains.



Pipe Joint Tester



Pipe Joint Tester

Ready to test with water or air. Capable of testing to 15 psi air or 50 psi water. For testing pipe between 54cm and 299cm

Pipe Sealing & Testing



eSTEAM Smoke Generator

The ROM eSTEAM Smoke Generator is a powerful and efficient solution designed for testing, inspecting, and locating leaks in drainage and sewer systems.



Pipe Sealing & Testing



Vacuum Test Petrol Pump

Hire the Vacuum Test Petrol Pump, a high-capacity petrol-driven vacuum system designed for manhole and drainage vacuum testing on NZ infrastructure sites.



0800 48 2000
ALSO AVAILABLE FOR PURCHASE



Test Gauge for Pipeline Pressure Testing



High Flow Bypass Plug



Controllers



Air Hose

0800 48 2000
ALSO AVAILABLE FOR PURCHASE

Pipe Sealing & Testing

Vacuum Test Head Bladder

Hire the Vacuum Test Head – Bladder Style from HTC — a multi-size vacuum test head designed for manhole and sealed-chamber testing, offering fast, secure sealing and accurate measurement for NZ infrastructure work.



Pipe Bending



UNI-42 Manual Tube Bender Complete with Stand



Uni-60 Electric Benders



Pipe Bender + Shoes Up To 50mm Nominal Pipe

Pipe Work Accessories

Portable Extraction Fan 300mm

For extraction of dangerous fumes, gases, dust, etc while people are working whether in buildings' tight areas or in a confined space.



Pipe Work Accessories

Pipe Clamp

A manual pipe squeezing tool designed for compressing polyethylene pipes, of gas and water, with diameters up to mm 63.



Pole Jacking



Pole Jacking

This system was developed collaboratively with industry experts to connect steel power/communication pole sections horizontally before installation.



Power Tools

Makita DRV250LB 18V LXT Cordless HUCK® Tool

Hire the Makita DRV250LB 18V LXT Cordless HUCK Tool from HTC — a high-performance cordless lockbolt tool modified for 3/16" and 1/4" Huck-style fasteners, ideal for remote site bolting, maintenance and assembly across NZ.



Power Tools

Steel Cutting Drop Saw

70Lb Electric Breaker

Reciprocating Saw

Cordless Lockbolt Tool



Pullers

10 Tonne F210I 2 Jaw Long Puller

10 Tonne F210 2 Jaw Puller

10 Tonne CH10 Cross Head

10 Tonne F310 3 Jaw Puller

20 Tonne F220 2 Jaw Puller

20 Tonne F320 3 Jaw Puller

25 Tonne PHP113 Posi Lock Puller

30 Tonne HP351 2 Leg Puller Set (includes

30 Tonne HP351 3 Leg Puller Set (includes

5 Tonne F35I 3 Leg Long Puller

5 Tonne F35 3 Leg Puller

5 Tonne A132 Chain Cross Head Pull Plate

Bearing Puller, Tri Sectional Durapac ET3-495



10 Tonne F210I 2 Jaw Long Puller



10 Tonne F210 2 Jaw Long Puller



20 Tonne 2 Jaw Puller



10 Tonne Cross Head

Here at HTC, we not only offer day to day problem solving for any of the daily challenges that may occur on the job, but we have also expanded our range to cover the regular planned maintenance programs that your company may have.

HTC SHUT KIT
NO HIDDEN COSTS.
NO UNWANTED TOOLS.

We provide you with an extensive product wish list, which in turn you tick what items you want and how many. Once this list has been compiled we price it on a day, week, month or even the duration of the shut.



CUSTOMISE YOUR TOOL BOX!

- Pumps - Hand, Electric & Hydraulic
- Torque Equipment - Wrenches & Cassettes
- Rams & Jacks
- Chain Blocks & Pull Lifts
- Mag Drills
- Spanners, Sockets & Floggers
- Strops & Slings
- Shackles

We then put it all in our shut box with a checklist, padlock it shut and send it out to the supervisor in charge.

You can trust HTC to guarantee that all our equipment is serviced, certified and site safe. It's all about 'Making The Hard Jobs Easy' so you can do your job faster and easier.

CONTACT THE HTC TEAM TO DISCUSS YOUR SHUT KIT TODAY!



Plus many other tools or equipment for your planned maintenance



Electric Pumps

- 1800cc Pump Single Acting 230v
- 6000cc Pump Single Acting 230v
- 1800cc Pump Double Acting 230v
- 6000cc Pump Double Acting 230v
- 9000cc Pump Double Acting 230v
- Riken Pump Single Acting 230v
- 20L Pump Double Acting 230v
- 30L Pump Double Acting 3 Phase
- 8000cc tank, Double acting, 230v



SMP4AR Pump Single Acting



PEM-8424 Pump Double Acting



MP15 Pump Double Acting

Hand Pumps

- 600cc 2 Speed Hand Pump
- 1800cc 2 Speed Hand Pump
- Single Acting 2 Speed Hand Pump 2000cc
- 5000cc Double Acting 2 Speed Hand Pump
- 8000cc Double Acting 2 Speed Hand Pump
- 2000cc Double Acting 2 Speed Hand Pump



High Capacity Hand Pump



Two Speed Hand Pump



Double Acting Hand Pump



Petrol Hydraulic Pumps

Petrol Hydraulic Pump 700bar
The Durapac PPM2014 petrol hydraulic power unit features a powerful 4 stroke Honda engine. A protection cage makes it easier to handle and provides protection on construction sites.



Hydrostatic Test Pumps

- Hydrostatic 40 Bar Max Water Test Pump
- Hydrostatic 100 Bar Max Water Test Pump
- Hydrostatic 700 Bar Max Water Test Pump

0800 48 2000
ALSO AVAILABLE FOR PURCHASE

HTC SYNCMASTER

NEW ZEALAND'S LARGEST
SYNCHRONOUS LIFTING SYSTEM

HTC SyncMaster is a synchronised, computer controlled, hydraulic lifting system for lifting bridges, buildings and large machinery.



HTC SyncMaster provides precision control and monitoring of complex lifting applications. Up to 5 power packs can be controlled by one master unit, giving 40 individually controlled cylinder points. Accuracies of +/-0.5mm allow the user to set parameters, limits and alarms to comply with engineer's methodology and safety margins.

HTC SyncMaster can in real time monitor and calculate cylinder loads, stroke lengths, total loads and the centre of gravity on large scale engineering and maintenance lifts. It provides a high degree of safety for personnel and property by automatically stopping the lift if set parameters are attempted to be exceeded.

Every configuration, process, alert and operator function is displayed and recorded in real time. This reduces costs by minimising manual control, measurements and comparisons to lift plans. No longer is it necessary to station workers at each lift point to synchronise activity via walkie talkie.

Lift data is collected during the lift process and this data can be downloaded for analysis and planning of future lifts.

NUMBER OF LIFTING POINTS	ACCURACY	MAXIMUM OPERATING PRESSURE
1 - 40	0.5 mm	700 bar

THE SYNCMASTER MULTIPLE POINTS SYNCHRONOUS LIFT SYSTEM ALLOWS FOR UP TO 5 POWER PACKS TO BE CONTROLLED BY ONE MASTER UNIT, GIVING A MAXIMUM OF 40 INDIVIDUALLY CONTROLLED CYLINDER POINTS.

The system constantly monitors cylinder positional and pressure data to safely and effortlessly achieve very accurate and repeatable load movements, regardless of weight distribution or size. One power pack controls up to eight single or double acting cylinders, or groups of cylinders. The 'X', 'Y' and 'Z' coordinates can be recorded for each cylinder, as required by the lift type. DURAPAC cylinder data may be selected from a drop down menu or manually entered for other cylinders. Pressure transducers allow pressure or load limits to be set for an individual cylinder or for all cylinders. Two linear transducers are available per lifting point to monitor cylinder and load displacement. Full data logging and real time graphical display is available for all lift variables.



TOUCH SCREEN

15 inch full colour touch screen withstands harsh environments. The glass is toughened making it both scratch and cut resistant.



VARIABLE FLOW CONTROL

Variable frequency drive motor gives a wider pump flow range. This is controlled by a joy stick controller that governs flow and directional control of the hydraulic cylinders.



CONTROL VALVES

High cycle, high speed solenoid valves allow precise flow control. All valves are leak free and have a 100% duty cycle.



PRESSURE TRANSDUCERS

Monitor load conditions at each lift point for maximum safety. Optional load cells are available for high precision weighing operations.



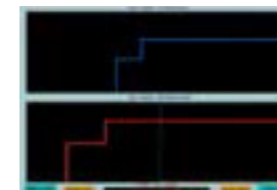
STROKE TRANSDUCERS

High precision 40 pulse per mm linear transducers combined with high speed counter cards achieve precise positional control. Various stroke transducers are available including internal cylinder design. Optional tilt meters are also available



ADJUSTABLE FLOW CONTROL VALVES

Controls the flow during decent and can be preset and locked.



LIFT MONITORING AND DATA STORAGE

Full pressure and displacement data presentation are available on screen to monitor the lift in real time. Lift data are stored and able to be downloaded in a format suitable for importing into Excel for further analysis and record keeping. This gives a permanent record of the displacement and load on every cylinder at defined time intervals.

FOR LARGE SCALE LIFTS, INCLUDING BRIDGES, BUILDINGS AND MACHINERY, **SYNCMASTER** IS THE SAFEST, MOST EFFICIENT SOLUTION.



Pneumatic 6-7 Bar Input 700 Bar Output Pumps

- 1475cc Air Foot Pump
- 1500cc Air Foot Pump
- 3769cc Air Foot Pump
- 9100cc Air Foot Pump



Hydraulic Pump – Manual 0.6L Ultra High Pressure

600cc 29,000 PSI High Pressure Hand Pump
Used for high pressure bearing removal, proof testing, and to power stud tensioners. Includes gauge and ultra high pressure hoses and fittings.



Plate Steel Punches

- Diamond Long Reach Punch Unit 220V
- Punch & Die Set - Elliptical (Horizontal)
- Punch & Die Set - Elliptical (Vertical)
- Punch & Die Set
- Hydraulic Punches
- Punch & Dies Set Steel
- Punch & Die Sets Copper
- Royal Master Punch and 3 Phase Pump with 110mm reach Max 24mm Dia x 16mm Steel. Max 28mm Dia x 17mm SS400
- Royal Master Punch & Die Set
- Riken 50 Tonne Punch



Hydraulic Punch



Electric Punch



Hydraulic Punch



Battery Punch



Switchboard/Chassis Punches

- Switch Board Punch Kit – Includes Pump, Hose & Ram
- Wastemaster 87mm Sink Punch (90mm Trim)
- Switch Board Punch & Die up to 70mm
- Switch Board Punch & Die over 70mm
- Rivnut Nutsert Insert Tool M6-M10 600Rpm



Rivnut Nutsert Insert Tool



Switch Board Punch Kit

Rail Gear

- Rail Drill Petrol Powered Includes Templates
- Airtec Petrol Powered Impact Wrench
- Diesel Grinder



Petrol Powered Impact Wrench



Diesel Grinder



Rail Web Drill

Weld Shears

- Rail Tensor
- Portable Vertical Ballast Tamper with Honda



Weld Shears



Ballast Tamper



TH70 Rail Tensor



Rail Gear

Rail Saw

Petrol Tamper

Portable Sleepers Drilling Machine

Petrol Powered LP Power Unit



Track Jacks

Track Gauge & Level

Hydraulic Impact Wrench Modified for Rail

Low Pressure Hydraulic Pumps

Portable Sleeper Drill

The FTP 950 M Portable sleeper drilling machine is light-weight and easy to use and has the purpose of quickly drilling wooden rail sleepers, guaranteeing precision and maximum safety for the operator.



Petrol Powered LP Power Unit



Low Pressure Hydraulic Pumps



Track Jacks



Hydraulic Impact Wrench Modified for Rail



Track Gauge & Level



Petrol Rail Saw



Hydraulic Rail Saw

Hollow Centre Rams

Tonnes	Stroke (mm)	Closed Height (mm)	Centre Hole Ø (mm)	Effective Area (cm)	Weight (kg ²)	Mode Number
12	40	127	19.5	17.86	3	SC1240
12	76	184	19.5	17.9	4.4	RHS123
20	40	165	27.5	28.86	7.8	SC240
20	49	162	26.9	30.7	7.7	RHS202
30	64	178	33.3	46.6	10.9	RHS302
30	155	330	33.3	46.6	21.8	RHS306
60	76	247	53.8	82.3	28.1	RHS603
60	153	323	53.8	82.3	35.4	RHS606
100	76	254	79.0	133	63	RHS1003
150	203	349	79.5	204.1 push/ 102.6 pull		RHD1508

4-10 Tonne Rams

Tonnes	Stroke (mm)	Closed Height (mm)	Centre Hole Ø (mm)	Effective Area (cm)	Weight (kg ²)	Mode Number
4	15	44	41	6.42	0.6	RO415
4	30	60	41	6.42	0.8	RO430
4	127	252	39	6.42	1.9	SO4127
5	25	110	38.1	6.5	1.0	RC51
5	76	165	38.1	6.5	1.5	RC53
10	105	172	57	14.4	30	C104C
10	15	44	70	14.52	1.1	LJ115
10	11	445	14.4	14.4	1.1	RLS503
10	150	300	57	14.52	63	S1150
10	300	471	57	14.52	7.4	S1300
10	55	130	57	14.52	2.1	S155
10	26	89	57	14.5	1.8	RG101
10	38	88	69	14.5	4.1	RLP101

20-30 Tonne Rams

Tonnes	Stroke (mm)	Closed Height (mm)	Centre Hole Ø (mm)	Effective Area (cm)	Weight (kg ²)	Mode Number
20	15	52	88	30.19	2.1	LJ215
20	50	160	86	33.18	5.8	S250
20	126	271	86	33.18	10.2	SJ2126
20	45	96	92	28.6	5	SCS201
25	102	216	86	33.2	8	C254C
25	210	324	86	33.2	12.2	RC258
30	62	117	101	42.1	6.8	RLP302
30	8	34	112	46.56	2.6	LF310
30	13	58.7	95.3x114.3	41.9	3.9	RLS300
30	15	58	105	46.56	3.5	LJ315

Can also be used for anchor testing. Please confirm the specifications needed with Staff at time of Hire.



Hollow Rams



Pancake Jack



Flat Jack Rams



Locking Collar With Swivel Cap



50–500 Tonne Rams

Tonnes	Stroke (mm)	Closed Height (mm)	Outside Ø (mm)	Effective Area (cm)	Weight (kg ²)	Mode Number
50	150	387	128	71.63	31.5	D5150
50	15	65	132	72.38	6.4	LJ515
50	60	127	128	62.0	10.5	RSS502
50	25	100	128	71.63	9.4	S525
50	50	206	128	71.63	13.8	S550
50	154	300	128	71.63	26.5	SJ5154
50	150	264	125	70.9	25	RSLC-506
50	60	122	124	62.1	10.9	RLP502
50	50	164	125	70.9	15	RSLC502
70	25	130	150	102.69	16.5	S725
90	15	85	178x153	126.7	14.5	RM1000
100	25	100	175	133.3	16.9	RJ1001
100	260	428	158	133	51.2	C10010
100	150	286	175	132.7	45	CGG10P150
100	150	287	165	132.7	48	CLL1006
100	57	140	169	126.6	21.4	RA1002
100	152	270	203	133	23	AR1006
100	159	298.5	187.3	133	22.6	RA1006
100	57	141	165	126.7	22.7	RLP1002
100	10	30	145	69.4	4.5	SV11Y100
200	150	473	241	285.3 push/ 139 pull	130	D20150
200	50	302	350		127	SPE2002
250	150	335	275	366.2	136	RDHG-250
500	100	444	395	730	390	SPE5006



Lightweight Aluminium



Low Profile



Double Acting Rams

Pull Rams

150mm Stroke Pull Ram — RAP206

The Durapac RAP-206 is a single-acting hydraulic cylinder designed for reliable and efficient performance.



Locking Collar Rams

Tonnes	Stroke (mm)	Closed Height (mm)	Outside Ø (mm)	Effective Area (cm)	Weight (kg ²)	Mode Number
100	50	137	175	146.8	26	RPLC-1002
50	50	164	125	70.9	15	RSLC-502
100	150	287	165	133	48	CLL-1006



Double Acting Rams

Ram Attachments

Wide range of attachments available, contact your HTC representative for more information



Ram Wedge

- 1 Tonne Wedge Ram
- 2 Tonne Wedge Ram
- DHS-15 Wedge Ram



Rebar Benders

*Large range of heavy duty table rebar benders

*Rebar bender/straighteners

*Jimmy benders- used for bending bars and starters in situ.

Rebar Bender/Straightener For 620N/mm² 32mm



Table Bender



Rebar Bender



Bender 32mm

Rebar Cutters

- 1 Tonne Wedge Ram
- 2 Tonne Wedge Ram
- DHS-15 Wedge Ram
- 2 Tonne Wedge Ram
- DHS-15 Wedge Ram
- DHS-15 Wedge Ram
- 2 Tonne Wedge Ram
- DHS-15 Wedge Ram



Cordless Rebar Cutter



Rebar Bender Cutter Kit



Battery Tipped Saw Cutter



32mm Rebar Cutter



Electric Rebar Cutter



16mm Rebar Cutter

Rebar Cutters

Rebar Cutter Max 32mm 230V

Hire the Ogura Rebar Cutter 32 mm (HBC-232) from HTC — a heavy-duty electric cutter built for clean, fast cuts through high-tensile reinforcement bar.



Shims

Cribbing Plates per set of 50mm

Shim Plates 200 x 200 x 20mm thick

Shim Plates 200 x 200 x 2mm thick



Site Support

Generator 2.2 KVA

Generator 5.5 KVA



Recycling Gear

Recycling Cutter

The Recycling Cutter – Hydraulic are powerful cutters that make quick work of most steel frames, electrical cables, car bodies and any other recycling material.



Snakes

Fibre Glass Duct Snake

Wide range of attachments available, contact your HTC representative for more information



Stressing Jack Mono

Mono Strand Stressing Jack 25

Includes Tooling for 0.5" Or 0.6" Strand not including Pump or Hose



Recycling Gear

TL-500 — Portable Rechargeable Light Tower 5.3m Tall

PT-200 — Portable Pan-tilt Light with Remote Control & Magnetic Base

TL-400 — Portable Rechargeable Light Tower 2.2m Tall

PL-300 — Portable Rechargeable Light Tower 3.4m Tall

TL-200 — Portable Rechargeable Light Tower 2.3m Tall

TL-100 — Portable Rechargeable Light Tower 1.4m Tall



TL-100



TL-200



TL-400



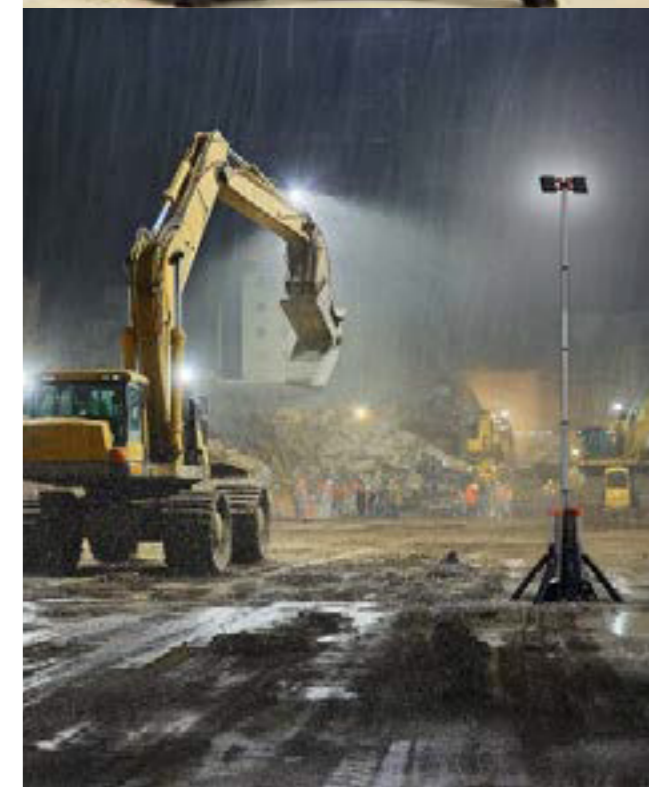
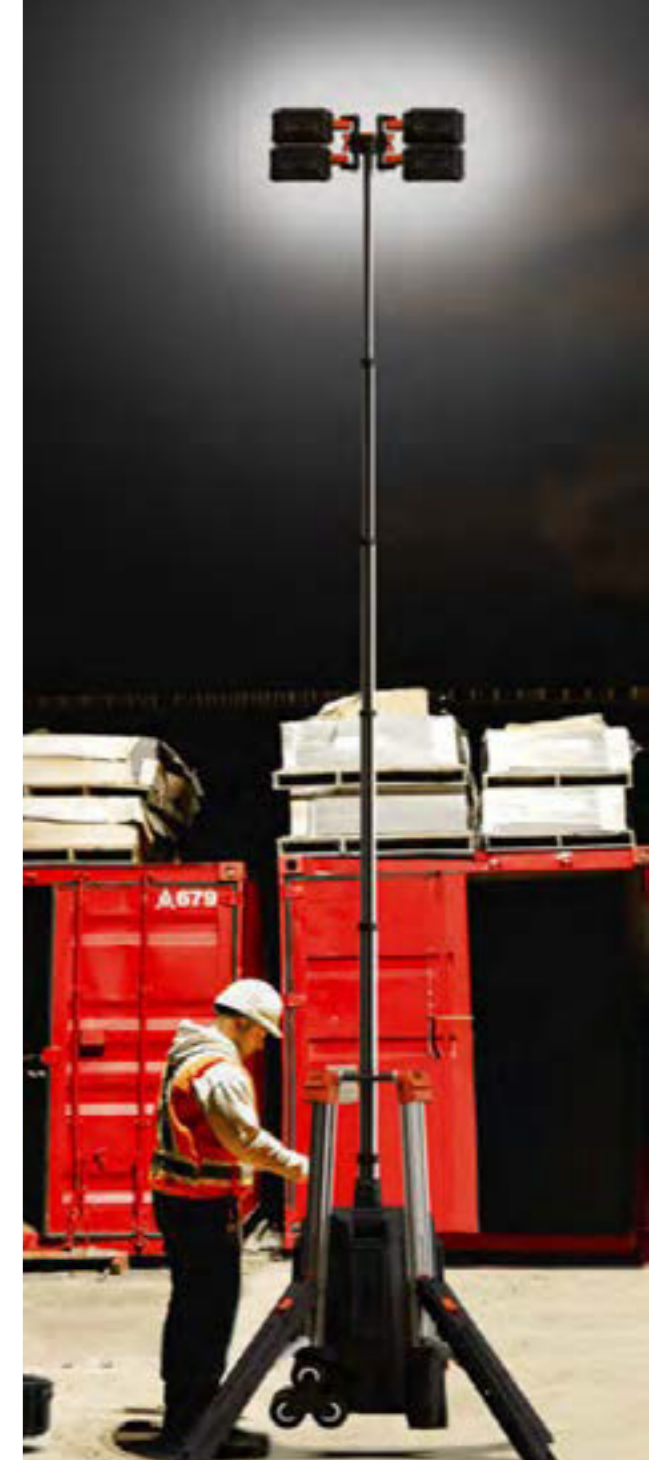
PL-300



PT-200



Fibre Glass Duct Snake



Bolting

Flogging Spanners/Slugging Wrenches

Sizes Ranging From 30-65mm



Sockets

POWERHEAD LPC4 585-5858Nm

LPC4 36mm Cassette

LPC4 41mm Cassette

LPC4 46mm Cassette

LPC4 55mm Cassette

LPC4 34mm Cassette

LPC4 50mm Cassette

LPC4 60mm Cassette

LPC4 65mm Cassette

LPC4 1 5/8" Cassette

LPC4 1 7/16" Cassette

LPC4 2" Cassette

LPC4 2 3/16" Cassette

LPC4 2 3/8" Cassette

POWERHEAD LPC8 1,094-10,941Nm LPC8

LPC8 - 2 1/4" Cassette

LPC8 - 3 1/2" Cassette

RIGHT ANGLE SQUARE DRIVE LPC8

3/4" Drive Hydraulic Wrench (166-1937Nm)

1" Drive Hydraulic Wrench (363-4237Nm)

1 1/2" Drive Hydraulic Wrench (708-10,813Nm)

1 1/2" Hydraulic Wrench (1,315-15,516Nm)

Sockets

Socket 3/4" Drive Full Range

Socket 1" Drive Full Range

Socket 1 1/2" Drive Full Range

Socket Set 1" Drive 15 PC 32-80mm



PowerHead LPC4

Torque Cassette Drive Head – LPC4 5858Nm



Hydraulic Wrench

Torque Wrench – Hydraulic 1-1/2" DR 7500NM

Torque Wrench

Hydraulic Pumps

Torque Wrench Pump – Pneumatic

Torque Wrench Pump – Electric

Torque Wrench Pump – Battery



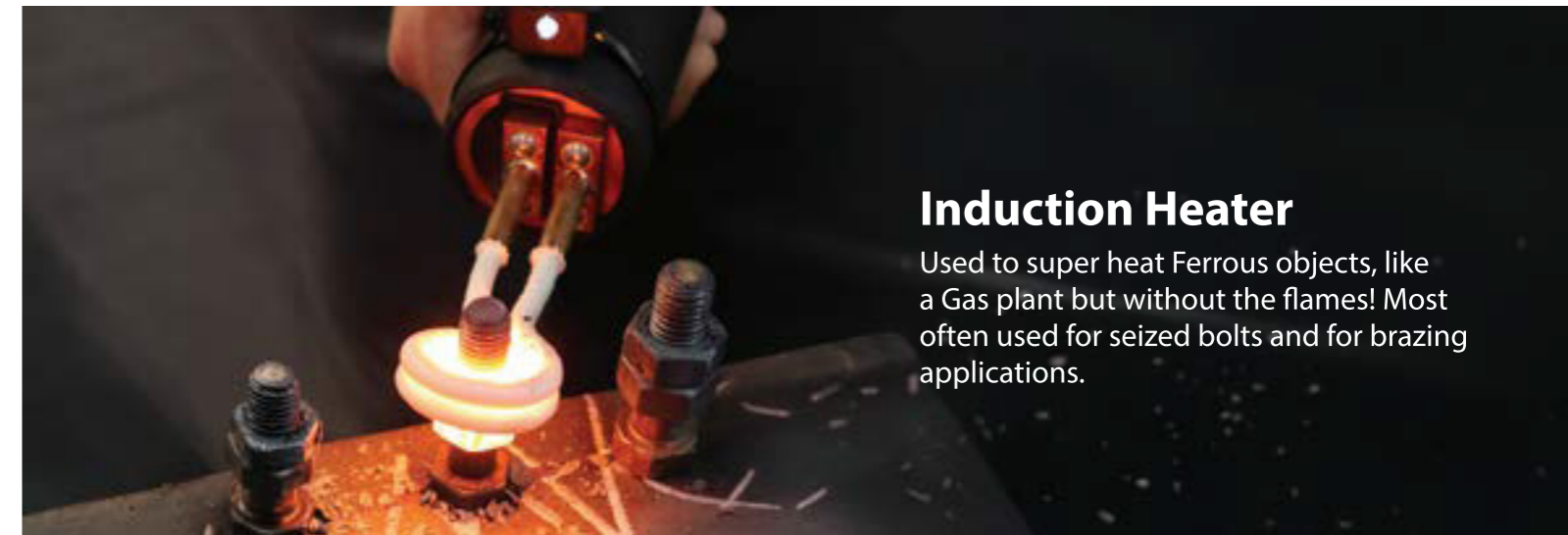
Pneumatic



Electric



Battery



Induction Heater

Used to super heat Ferrous objects, like a Gas plant but without the flames! Most often used for seized bolts and for brazing applications.

Sockets

RAD 10GX-NX 3/4" DR 272-1360Nm

CLD 155 1" DR 1730Nm

CLD2/80 1" DR 800-2800Nm

RAD 25GX-NX 1" DR 680-3400Nm

CLD2/300 1" DR 385-3595Nm

RAD 34GX 1" DR 1355-4600Nm

RAD 50 1 1/2" DR 2033-6770Nm

Jgun A1 Pneumatic Torque Multiplier 1513Nm

Jgun A3 Pneumatic Torque Multiplier 4174Nm

Jgun A5 Pneumatic Torque Multiplier 6998 Nm



RAD 10GX-NX



CLD 155



Pneumatic Torque Multiplier - Digital



Pneumatic Torque Multipliers

0800 48 2000
ALSO AVAILABLE FOR PURCHASE

Nationwide Calibration & Testing for Tools, Equipment & PPE

HTC is New Zealand's trusted partner for professional calibration and certification services, helping industries maintain safety, accuracy, and compliance across a wide range of tools and equipment. Whether you need a torque wrench certified, a force gauge recalibrated, or your high-voltage PPE tested, our technicians deliver results you can rely on — backed by traceable standards and decades of experience.

Explore each service below to see how HTC can help keep your tools accurate, your records up-to-date, and your teams working safely

SUPPLYING SOLUTIONS TO THE NEW ZEALAND INDUSTRY FOR OVER 40 YEARS



Torque Calibration

From manual wrenches to digital and hydraulic torque tools, we ensure precise fastening every time.



Force Calibration

Accurate measurement of tension and compression with calibrated dynamometers, gauges, and load cells.



Pressure & Vacuum

Reliable calibration of gauges, transducers, and vacuum sensors across a wide pressure range.



Gas Detection & Environmental Meters

Calibration of single and multi-gas detectors, UV light meters, temperature and humidity devices.



Weighing Equipment Calibration

Precision checks for platform scales, crane scales, and portable weighing systems.



PPE & Safety Gear Inspections

Certified inspection and tagging for harnesses, slings, shackles, and lifting gear.



Metrology & Specialty Instruments

If it measures, detects, or protects — we probably calibrate it.



Electrical Safety Calibration

Dielectric testing of gloves, mats, poles, and other liveline PPE to keep workers protected.

Calibration, Testing, & Inspection Services

Contact us!

0800 48 2000
info@htc.co.nz

Visit us!

31 Andrew Baxter Drive
Airport Oaks
Auckland 2022
31 Epsom Road
Sockburn
Christchurch 8042

Dave B.



The speed and efficiency of getting our equipment back tested and certified was second to none.

Grant C.



We had to design a Test Rig using Hydraulic Gear, HTC advised us what items we needed and supplied them and helped with us to set everything up on the Rig

Steve P.



HTC really came through on a job for us. Very helpful and the guys know their stuff. Appreciate it!

Chris M.



Stocking reliable brands of trade equipment and competitive prices. Have never let us down with our orders

ErleV.



Always had good service, the crew in Christchurch go the extra mile when required and always happy to help out where possible.

Deon S.



We have had great service from HTC during the year working on a large cable fault. HTC's assistance with hydraulic crimping tools has been exceptional.

Electric Torque Multipliers - Tone

Electronic torque multiplier 1" drive
1600-4000Nm

Electronic torque multiplier 1-1/2"
drive 2400-6000Nm

230V Electric Torque Multiplier
2,000-5,500Nm 1-1/2" Drive



Battery Nut Runner

GST602QE

GNRS402E-CE

Manual Torque Multipliers

Torque Multiplier 1300Nm 5:1

Torque Multiplier 1627Nm 6:1

Torque Multiplier 2700Nm 5:1

Torque Multiplier 4339Nm 18.5:1

1 inch drive 3500Nm

Stand Alone Torque Wrench with
Wheel Nut Tool



Wheel Nut Tool

Torque Multiplier
1300Nm

HG20 max torque
3500Nm

Manual Torque Wrenches

3/8" Drive 5-25Nm - QL25n

1/2" Drive 20-100Nm - 100

1/2" Drive 40-200Nm - QL200mh

1/2" Drive 60-300Nm - 300

1/2" Drive 60-330Nm - 330

3/4" Drive 60-420Nm - QL420n

3/4" Drive 150-700Nm - 4R

3/4" Drive 200-800Nm - 4AR

3/4" Drive 300-1000Nm - 5R

3/4" Drive 700-1500Nm - 5AR

1" Drive 300-1400Nm - QLE1400n



1/2" Drive 40-200Nm

3/8" Drive 5-25Nm

3/4" Drive 60-420Nm

1" Drive 300-1400Nm



Battery Impact Wrenches

Battery Impact Wrench 3/4" Drive 1250Nm

Electric Impact Wrenches

1/2" Impact Wrench 350Nm

3/4" Impact Wrench 588Nm

1" Impact Wrench 1000Nm



Electric 1050nm,
3/4" Drive

1" Impact Wrench
1000Nm

Pneumatic Impact Wrenches

Air powered impact wrench 1/2" Drive

Air powered impact wrench 3/4" Drive

Air powered impact wrench 1" Drive

Transmission Jacks



Electrical Winches

Electric Cable Puller 2.5 Tonne
Pull - up to 43.5m/min

Electric Super Tugger (3000kg) -
8m/min



Manual Winches

1.6 Tonne Tirfor - Wire Rope
Puller (20m Rope)

3.2 Tonne Lift Tirfor, 5 Tonne Pull
(20m Rope)

Battery Powered

PCW-3000Li Battery Winch
(1000kg) - 1.6m/min



Electric Impact Wrenches

Petrol Twin Capstan (1000kg) - 25m/min

PCW-4000 Petrol Hauling Winch (1000kg)

PCW-4500 2 Stroke (1200kg) - 12.2m/min

PCW-5000 Petrol Powered Winch (1000kg)



About HTC Hire

HTC Hire Rates

You can find 4 hour and 24 hour hire rates for all our tools listed on our website.

When you hire a tool for over 7 days our team will calculate a discounted rate based on the length of the hire. HTC hire rates usually reduce as the term of the hire increases. Once the hire period rolls into a second month, the deal can get even better.

We understand that you don't always know how long a job is going to take. Talk to our team about projected project times and actual day's usage of equipment. At HTC we aim to accommodate days when tools are not used by offering stand by rates and contract rates for long term hire.

We don't usually charge for transit time for out of town customers.

HTC Damage Waiver

HTC Damage Waiver aims to reduce a client's financial liability during the hire of HTC's equipment. Which means it can help you avoid meeting the cost of unexpected damage of hire equipment.

HTC Damage Waiver is an agreement to cover 'loss of use'. It covers you against the cost of repair for accidental damage to equipment, replacement value, salvage costs & hire charges incurred during repair/replacement if the equipment is damaged.

It's important to know Damage Waiver does not cover against loss, theft or malicious or negligent

damage. The client is responsible for the correct use, maintenance and safekeeping of HTC's equipment during the hire period.

Damage Waiver is a non-refundable fee of 10% of the hire charges for the equipment and billed on the hire invoice in addition to your hire charges. The Damage Waiver Excess is limited to no more than \$1000 for accidental loss or damage.

HTC Parts and Service

HTC's in-house specialist fitters are trained to provide fast, reliable and economic repairs and scheduled maintenance for your hydraulic tools and equipment.

Common parts are stocked for most products we hire and sell, which means you get your gear back quicker. Worried about keeping your current projects progressing while your gear is being serviced?

HTC offers discount hire rates when your own tools and equipment are being serviced by our specialist fitters.

HTC also supply seal kits, hoses, couplers, gauges, hydraulic fluids, coolants, cutters, punches, compression dies and a large range of other spares and accessories.

The skillsets of HTC's Specialist Fitters go beyond repairs and scheduled maintenance. Our team can also create bespoke engineering solutions for your projects.



Pressure & Force Calculations

Calculating Force from Pressure

The following calculates the amount of force being applied to a load. In order to complete the equation, the Effective Area (CEA) of the cylinder being used must be known. Each cylinder has its own specific CEA.

To calculate kilo newtons using a gauge reading (kgf/cm²)

$$\frac{\text{Applied pressure (kgf/cm}^2\text{)} \times \text{Cylinder effective area} \times 9.81}{1000} = \text{kilo newtons}$$

To calculate kilo newtons using a gauge reading (psi)

$$\frac{(\text{Applied pressure (psi)} \div 14.233) \times \text{Cylinder effective area} \times 9.81}{1000} = \text{kilo newtons}$$

To convert kilo newtons to tonnes, divide by 9.81

Effective area for cylinder used: _____ cm²

CONVERSION FORMULAS

COMMON CONVERSION FORMULAS		SI* CONVERSION FORMULAS		APPROXIMATE CONVERSION	
Multiply SI* Unit	By Conversion Factor	To get or Multiply Non-SI Unit	By Conversion Factor	To get SI* Unit	
Length					
millimetre (mm)	x 0.03937	= inch	x 25.4	= mm	
(1 inch = 25.4mm exactly)					
centimetre (cm) 10mm	x 0.3937	= inch	x 2.54	= cm	
metre (m) 1000mm	x 3.28	= foot	x 0.305	= m	
metre (m)	x 1.09	= yard	x 0.914	= m	
kilometre (km) 1000m	x 0.62	= mile	x 1.61	= km	
Area					
millimetre (mm)	x 0.00155	= inch ²	x 6.45	= mm ²	
centimetre ² (cm ²)	x 0.155	= inch ²	x 6.45	= cm ²	
metre ² (m ²)	x 10.8	= foot ²	x 0.0929	= m ²	
metre ² (m ²)	x 1.2	= yard ²	x 0.836	= m ²	
hectare (ha) 10,000m ²	x 2.47	= acre ²	x 0.405	= ha ²	
kilometre ² (km ²)	x 0.39	= mile ²	x 2.59	= km ²	
Volume					
centimetre ³ (cm ³)	x 0.061	= inch ³	x 16.4	= cm ³	
litre (l)	x 61	= inch ³	x 0.016	= 13	
millilitre (ml)	x 0.034	= oz-liq	x 29.6	= ml (1ml = 1cm ³)	
litre (l) 1000ml	x 1.06	= quart	x 0.946	= 13	
litre (l)	x 0.26	= gallon	x 3.79	= 13	
metre ³ (m ³) 1000l	x 1.3	= yard	x 0.76	= m ³	
Mass					
gram (g)	x 0.035	= ounce	x 28.3	= g	
kilogram (kg) 1000g	x 2.2	= pound	x 0.454	= kg	
metric Tonne (t) 1000kg	x 1.1	= Tonne (short)	x 0.907	= t	
Force (N = kg • ms²)					
newTonne (N)	x 0.225	= pound	x 4.45	= N	
kilonewTonne (kN)	x 225	= pound	x 0.00445	= kN	
Torque					
newTonne metre (Nm)	x 8.9	= lb. in.	x 0.113	= Nm	
newTonne metre (Nm)	x 0.74	= lb. ft	x 1.36	= Nm	
Pressure					
kilopascal (kPa)	x 4.0	= in. H2O	x 0.249	= kPa	
kilopascal (kPa)	x 0.30	= in. Hg	x 3.38	= kPa	
kilopascal (kPa)	x 0.145	= p.s.i.	x 6.89	= kPa	
megapascal (MPa)	x 145	= p.s.i.	x 0.00689	= MPa	
Bar	x 14.5	= p.s.i.	x .0689	= Bar	
Power					
kilowatt (kw)	x 1.34	= hp	x 0.746	= kw	
kilowatt (kw)	x 0.948	= Btu/s	x 1.055	= kw	
watt (w)	x 0.74	= f t. lb/s	x 1.36	= w	
Temperature					
°C = (°F - 32) ÷ 1.8	°F = (°C x 1.8) + 32				
Flow					
cu. cm./min.	x 0.61	= cu. in./min . x 16.4 = cu. cm./min			
litres/min.	x .2642	= GPMX 3.785 = litres/min.			

Fractions	Decimals	Millimetres	Fractions	Decimals	Millimetres	Fractions	Decimals	Millimetres
1/64	0.016	0.397	23/64	0.359	9.128	45/64	0.703	17.859
1/32	0.031	0.794	3/8	0.375	9.525	23/32	0.719	18.256
3/64	0.047	1.191	25/64	0.391	9.922	47/64	0.734	18.653
1/16	0.063	1.588	13/32	0.406	10.319	3/4	0.750	19.050
5/64	0.078	1.984	27/64	0.422	10.716	49/64	0.766	19.447
3/32	0.094	2.381	7/16	0.438	11.113	25/32	0.781	19.844
7/64	0.109	2.778	29/64	0.453	11.509	51/64	0.797	20.241
1/8	0.125	3.175	15/32	0.469	11.906	13/16	0.813	20.638
9/64	0.141	3.572	31/64	0.484	12.303	53/64	0.828	21.034
5/32	0.156	3.969	2/2	0.500	12.700	27/32	0.844	21.431
11/64	0.172	4.366	33/64	0.516	13.097	55/64	0.859	21.828
3/16	0.188	4.763	17/32	0.531	13.494	7/8	0.875	22.225
13/64	0.203	5.159	35/64	0.547	13.891	57/64	0.891	22.622
7/32	0.219	5.556	9/16	0.563	14.228	29/32	0.906	23.019
15/64	0.234	5.953	37/64	0.578	14.684	59/64	0.922	23.416
1/4	0.250	6.350	19/32	0.594	15.081	15/16	0.938	23.813
17/64	0.266	6.747	39/64	0.609	15.478	61/64	0.953	24.209
9/32	0.281	7.144	5/8	0.625	15.875	31/32	0.969	24.606
19/64	0.297	7.541	41/64	0.641	16.272	63/64	0.984	25.003
5/16	0.313	7.938	21/32	0.656	16.669	1	1.000	25.400
21/64	0.328	8.334	43/64	0.672	17.006			
11/32	0.344	8.731	11/16	0.688	17.463			

1mm = 0.3937 and
.001 = 0.254mm

Auckland

Phone: 09 271 0800
Fax: 09 271 0801

31 Andrew Baxter Drive,
Airport Oaks,
Auckland 2022

Christchurch

Phone: 03 341 0040
Fax: 03 341 0043

31 Epsom Road,
Sockburn,
Christchurch



Makin' the Hard Jobs Easy

www.htc.co.nz • info@htc.co.nz • 0800 48 2000