



SPECIALISED TOOLS  
AND EQUIPMENT

***CIVIL & DRAINAGE  
ESSENTIALS***



**ALSO AVAILABLE ONLINE**  
**HTC.CO.NZ**

[www.htc.co.nz](http://www.htc.co.nz)

SALES • SERVICE • CALIBRATION • HIRE

0800 48 2000

**MAKIN' THE HARD JOBS *EASY***

# SUPERCHARGING INDUSTRY & ESSENTIAL INFRASTRUCTURE



**HTC** has been creating specialised tooling solutions for New Zealand industry for over 40 years.

Specialists in 700 bar hydraulics, HTC offers more than 35 years of experience in the supply and application of high pressure hydraulic equipment. HTC sources and supplies solution-based tools and equipment for electrical contracting, railway, construction, engineering and drainage industries.

With branches in Auckland and Christchurch, HTC offers equipment sales, service, repair, calibration and tool hire.

***“We are passionate about making the hard jobs easier for our customers. Call us today to see how we can help with your next project.”***

Robb Huskinson  
Owner/Director

## HTC'S PROMISE TO YOU



Only need a tool for a short job?  
Rent it and ease your budget impact



Rent it to try for a day, if you decide  
to buy then the days hire is free



Contract rates, talk to us for the right  
tooling for your project



24 Hour call out service



Technical Solutions to  
keep your job running



# INDEX

<b>A</b> nchor Testing	2
<b>F</b> lange Equipment	2
<b>G</b> as Detection	3
Generators	3
<b>H</b> ydraulic Rams	3
Hydraulic Tools	4
<b>L</b> ift & Shift	7
<b>P</b> ipe and Cable Hauling	10
Pipe Connections	11
Pipe Sealing & Testing	12
Pipe Joint Tester	17
<b>R</b> ebar Tools	18

<b>T</b> ension Meters	19
<b>V</b> entilation Fans	19
<b>W</b> inches	20
<b>HTC Service</b>	21



## Anchor Bolt Testing

### Anchor Tester

#### IMG REF Product Description

- A1 Anchor Bolt Tester 0-10kN & 0-25kN. Includes Eye Bolt Tester
- A2 Range of Hydraulic Hollow rams
- A3 Heavy Duty Tester Kit with built in digital gauge

A3



A1



A2



## Flange Equipment

### Flange spreader and aligners

#### IMG REF Product Description

- F1 Hydraulic Fixed Flange Alignment & Rotational Tool: includes 2 x Hydraulic Alignment Tools, Hydraulic Pump, Hose, 1000 Bar Gauge & Ratchet Stop
- F2 Hydraulic Flange Spreader Kit: includes 2 x Hydraulic Spreaders, 2 x Hoses, Hydraulic Pump, 2 x 1000 Bar Gauges, 2 x Step Wedges 2 x Step Chocks

F1



F2



## Bolting Tools

#### IMG REF Product Description

- F3 Powered torque tools 50-50,000Nm +. Hydraulic, pneumatic, battery and manual tools available.

F3



# Gas Detection

## Gas Detectors

IMG REF Product Description

G1 A range of equipment available, ask the team for details



G1



# Generators

IMG REF Product Description

G2 Honda industrial and inverter generators - Multiple models available

G2



# Hydraulic Rams

## Rams

IMG REF Product Description

H1 Hydraulic rams - 5t - 1000t models available, custom sizes can be made to order

H1



## Wedge Rams

IMG REF Product Description

H2 Wedge-type rams are the perfect tool when you only have the slightest gap. Designed to lift, align or pry apart plant and machinery.

H2



## Stressing Jack

IMG REF Product Description

H3 POWERSTRESS 10T Mono Strand Stressing Jacks (Mono or multi-strand jack)

H3







# Hydraulic Tools

## Breakers

IMG REF Product Description

H3 Ideal in general demolition works of concrete and asphalt cutting.

H3



## Diamond chainsaw

IMG REF Product Description

H4 Lightweight solution for fast cutting of concrete, reinforced concrete, conduit, brick and other masonry.

H4

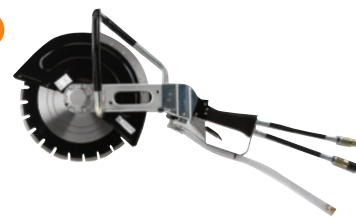


## Hydraulic circular saw

IMG REF Product Description

H5 Unbeatable power to weight ratio, versatile usage, no electricity means no possibility of electric shock hazard, absence of emissions, minimal noise vibrations and maintenance, can also be used for professional underwater works.

H5



## Riexinger pipe saw

IMG REF Product Description

H6 Powerful. Versatile. Easy to operate with infinitely variable electric feed and thanks to the variable chain clamping system, even thin-walled pipes, such as GRP pipes, are not deformed either when clamping the machine or when sawing.

H6

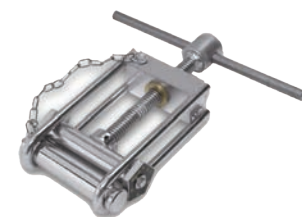


## Pipe compression tool

IMG REF Product Description

H7 Manual Pipe Compressing Tool for 16mm – 63mm Polyethylene Pipe.

H7

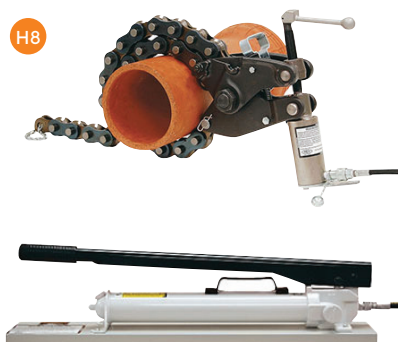


## Pipe cutters, squeeze and pop

IMG REF Product Description

H8 Ideal solution for cutting larger diameter Cast Iron, Tile and Concrete Pipe.

H8



# Hydraulic Tools

## Hydraulic Hammer Drill

### IMG REF Product Description

- H9** Safer than electrical tools, this hydraulic drill can be used completely submerged in water or with the operator inside a trench with "feet in water and mud".

H9



## Pole Tamper

### IMG REF Product Description

- H10** Greenlee hydraulic pole tamper – 1.8m long, kidney foot, open and closed center operation

H10



## Hydraulic Pumps

### IMG REF Product Description

- H11** Hand operated 700bar hydraulic pumps – Multiple fluid capacity sizes available
- H12** Air operated 700bar hydraulic pumps – Multiple fluid capacity sizes available
- H13** Riken 230v 700bar hydraulic pump units – Single and double acting, custom builds available
- H14** Durapac petrol and diesel operated 700bar hydraulic pumps – Multiple models available
- H15** Petrol and diesel operated low pressure pumps – Multiple models available
- H16** Battery Hydraulic Pump

H11



H12



H13



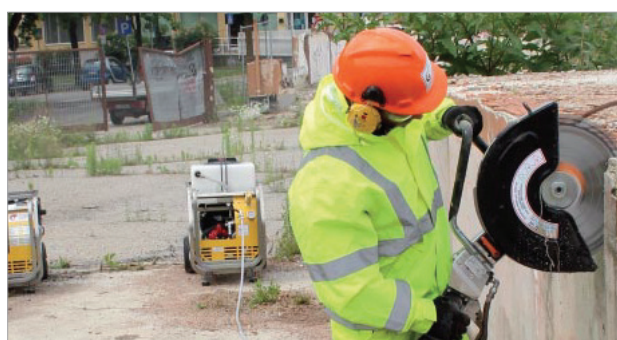
H14



H16



H15



## Water/Trash Pumps

IMG  
REF

### Product Description

H17

Wide range of water/trash pumps available. Small electric units, through to large machine mount hydraulic models.

H17





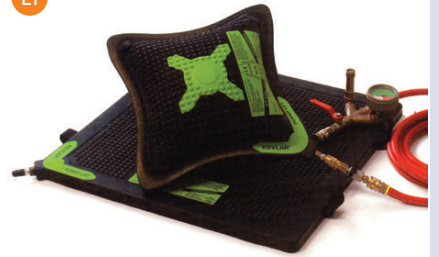
# Lift & Shift

## Lifting Bags

### IMG REF Product Description

**L1** Range of air lifting bags and accessories

**L1**



## Chain Blocks

### IMG REF Product Description

**L4** Elephant manual chain blocks – 3m and 6m standard drop, custom lengths available, capacities 0.5t to 5t available

Model	Capacity (ton)	Lift (m)
C-21-0.5	0.5	3
C-21-1.0	1.0	3
C-21-1.5	1.5	3
C-21-2.0	2.0	3
C-21-3.0	3.0	3

**L4**



## Lever Hoists

### IMG REF Product Description

**L5** Elephant lever chain hoists – 1.5m drop, custom lengths available, sizes range from 250kg to 6.3t

Model	Capacity (ton)	Lift (m)
Y11-25	0.25	1
YA-50	0.5	1.2
YA-80	0.8	1.5
YA-160	1.6	1.5
YA-320	3.2	1.5
YA-630	6.3	1.5

**L5**



## Electric Hoists

### IMG REF Product Description

**L6** Range of Wire and Chain Hoists available with capacities up to 3 Tonne

**L6**



# Lift & Shift

## Portable Gantries

### IMG REF Product Description

**L7** Reid portable gantries – Multiple sizes available, rated to be used with safety harness



## Porta Gantry Rapide

### IMG REF Product Description

**L8** Unique and innovative PORTAGANTRY RAPIDE is a height adjustable, foldable aluminium gantry designed for rapid deployment. Capable of an impressive load lifting capacity of up to 1000kg. Can be assembled and disassembled by just one person within a minute without the need for any tools.





# Lift & Shift

## Porta Davit

### IMG REF Product Description

- L14** Rapidly deployable, lightweight solution to heavy lifting and lowering of goods. Manually operated by just one person while maintaining a lifting capacity up to 600kg.

L14



## T Davit

### IMG REF Product Description

- L15** Lightweight, portable, with a lifting capacity of up to 500kg and 360° rotation under a full load.

L15



## Loadskates

### IMG REF Product Description

- L16** Borkey load skates - Multiple kits and individual units available

L16



## Manhole Cover Lifters

### IMG REF Product Description

- L17** Safely move Manhole covers. Lifting capacity up to 15000Kg.

L17



# Pipe and Cable Hauling

## Line Blowing Equipment

### IMG REF Product Description

- P1** Line blowing equipment - Darts, balloons, birds and accessories available
- P2** Stringing Gun for microducts to suit cable ducts Ø up to 200 mm

P1



P2


 100 m  
 ≈ 300 ft


02:12

## Snake rods

### IMG REF Product Description

- P3** Fiberglass rod on dispensers - Multiple sizes available, 4-13mm diameter, 60-250m long, with tracer wire built in

P3



## Rollers

### IMG REF Product Description

- P4** Cable guide rollers - Multiple sizes and models available
- P5** Trench rollers - Multiple sizes and models available
- P6** Universal Stringing rollers - Multiple sizes and models available
- P7** Hanging Rollers

P4



P5



P6



P7





# Pipe Connections

## Hot tapping gear

### IMG REF Product Description

- P8** Hand operated and designed for drilling holes in active water lines up to 250 psi. Lightweight and easy for one operator to set up and use on 3/4" to 2" steel, cast iron, ductile and plastic pipe.



## Magnetic Drill

### IMG REF Product Description

- P9** Magnetic based drills – 12mm to 100 capacities  
**P10** Magnetic based drills – Low Height  
**P11** Automatic Feed Magnetic Drills  
**P12** Medium Pipe Magnetic drills



## Pipe Bending

### IMG REF Product Description

- P13** Pipe bender + shoes up to 50mm nominal pipe not including pump & hose.



## Pipe Threading

### IMG REF Product Description

- P14** Pipe Threading Machines and Roll Grooving Machines are available in many sizes and configurations



## Pipe Sealing & Testing

Testing gauges, inflation controllers and Hoses

### IMG REF Product Description

- P15** Range of Analogue and Digital Gauges available with capacities to suit equipment in use.



P15



## Sealing and Testing Bags

Small diameter plugs

### IMG REF Product Description

- P16** Available for sealing and testing, in a variety of lengths and sizes, up to 305mm diameter.



P16

## Standard plugs

### IMG REF Product Description

- P17** Available for sealing and testing, in a variety of lengths and sizes, up to 1800mm diameter.





## Bypass Plugs

IMG REF Product Description

P18 Multi-size plugs with a larger bypass cover the ranges from 100mm up to 1800mm.



## PLUGY - BLOCKING PLUGS

PART NUMBER	NOMINAL SIZE	SIZE USAGE RANGE		REQUIRED INFLATION PRESSURE (BAR)	DEFLATED PLUG		PRODUCT WEIGHT (KG)	EYE BOLT M THREAD	INFLATION VALVE THREAD SIZE
		MIN. DIA. (MM)	MAX. DIA. (MM)		DIAMETER (MM)	RUBBER LENGTH (MM)			
519423	40-70	40	70	2.5	35	160	0.2	NA	R 1/4"
519424	70-150	70	150	2.5	68	300	0.4	NA	R 1/4"
60417	100-200	100	200	2.5	92	500	1.35	M6	R 1/4"
526850	150-200	150	200	2.5	142	350	1.85	M8	R 1/4"
60418	150-300	150	300	2.5	142	540	2.6	M8	R 1/4"
60419	200-400	200	400	2.5	192	600	3.6	M8	R 1/4"
60599	300-525	300	525	2.5	272	630	6.8	M8	R 1/4"
60422	350-600	350	600	2.5	322	830	9.8	M10	R 1/4"
60606	375-750	375	750	2.5	342	1050	11.9	M10	R 1/4"
60453	500-800	500	800	2.5	472	1150	19.5	M10	R 1/4"
60425	500-1000	500	1000	1.5	472	1150	19.5	M10	R 1/4"
523941	600-1200	600	1200	1.5	574	1450	38	M10	2 x R 3/8"
78959	750-1500	750	1500	1	600	2300	75	M10	2 x R 1/4"
535881	800-1800	800	1800	1	600	3000	106	M10	2 x R 1/4"

## PLUGSY - BYPASS PLUGS

PART NUMBER	NOMINAL SIZE	SIZE USAGE RANGE		REQUIRED INFLATION PRESSURE (BAR)	DEFLATED PLUG		PRODUCT WEIGHT (KG)	EYE BOLT M THREAD	INFLATION VALVE THREAD SIZE	BYPASS DIAMETER (FEMALE)
		MIN. DIA. (MM)	MAX. DIA. (MM)		DIAMETER (MM)	RUBBER LENGTH (MM)				
526849	70-150	70	150	2.5	68	300	1.7	NA	R 1/4"	1/2"
60429	100-200	100	200	2.5	92	500	2.7	M6	R 1/4"	1"
526851	150-200	150	200	2.5	142	350	3.3	M8	R 1/4"	1"
60432	150-300	150	300	2.5	142	540	4.3	M8	R 1/4"	1"
60434	200-400	200	400	2.5	192	600	7	M8	R 1/4"	2"
60630	300-525	300	525	2.5	272	630	12	M8	R 1/4"	2"
60440	350-600	350	600	2.5	322	830	16	M10	R 1/4"	2"
60632	375-750	375	750	2.5	342	1050	19.7	M10	R 1/4"	2"
60454	500-800	500	800	2.5	472	1150	32.5	M10	R 1/4"	2"
60442	500-1000	500	1000	1.5	472	1150	32.5	M10	R 1/4"	2"
523942	600-1200	600	1200	1.5	574	1450	55.5	M10	2 x R 3/8"	4"
78960	750-1500	750	1500	1	600	2300	91	M10	2 x R 1/2"	4"
535882	800-1800	800	1800	1	600	3000	117	M10	2 x R 1/2"	4"

## BACK PRESSURES (bar)\* - PLUGY, PLUGSY

PLUG SIZE	PIPE DIAMETER (MM)																				
	40	70	100	150	200	250	300	350	400	500	600	800	1000	1200	1300	1400	1500	1600	1700	1800	
40-70	2	1.2																			
70-150		2.2	1.7	1.3																	
100-200			2.2	1.7	1.3																
150-200				2	1.5																
150-300				2.2	2	1.4	1.2														
200-400					2.2	2	1.7	1.5	1.2												
300-525							2	1.7	1.5	1.2											
350-600								2.1	1.9	1.6	1.3										
375-750									2	1.7	1.4										
500-800										1.8	1.4	1.1									
500-1000										1	0.8	0.6	0.5								
600-1200											1	0.7	0.6	0.5							
750-1500												1	0.9	0.8	0.7	0.6	0.5				
800-1800													1	1	0.9	0.8	0.7	0.6	0.5	0.5	0.4

\* measured in a dry iron pipe

# Pipe Sealing & Testing

## Pipe Pinching Tools

### IMG REF Product Description

- P19** Manual pipe squeezing tool designed for compressing polyethylene pipes, of gas and water, with diameters up to 63mm.

P19



## Diamond Shape Plugs

### IMG REF Product Description

- P20** Cone/Diamond shaped plugs available in dimensions from 400 mm - 2400 mm (16' - 95'). Produced from special CR rubber and reinforced with fabric. Carrying handles and eyelets for easier manipulation. Suitable for sealing pipes of various shapes (cone, oval, etc.).



## Flexible Packer

### IMG REF Product Description

- P21** Suitable for patch repairs ranging from 1 up to 5 meters (3.3' - 16.4'). Equipped with a bypass and wheel system that allows positioning along the pipeline. They can easily bend and fit through the manholes.



## Lateral Packer

### IMG REF Product Description

- P22** Suitable for repairs of pipes of smaller diameters, especially in house connection installations. Rounded on both ends in order to simplify handling and insertion. Equipped with quick action couplings.





# Pipe Sealing & Testing

## Man Hole Plugs

### Product Description

- P23** For manhole tightness testings, these plugs are short and light, equipped with three eyebolts for a simple vertical insertion.



## Oil/Chemical Resistant Plugs

### Product Description

- P24** Made from a special CR rubber compound, reinforced with aramid cord. Superb resistance to certain chemicals, ideal for use in the oil and gas industry.



## Oval Shape Plugs

### Product Description

- P25** Special models including versions that adapt to the shape of the pipeline. Oval-shaped models simplify insertion through manholes. Available in both sealing and bypass types.



**P25**

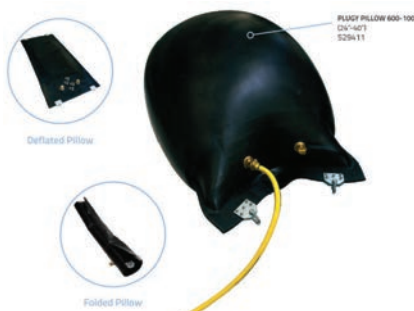
## Pillow Type Plugs

### Product Description

- P26** Unique construction ensures low weight and high flexibility during use and storage. Suitable for the largest pipelines.



**P26**

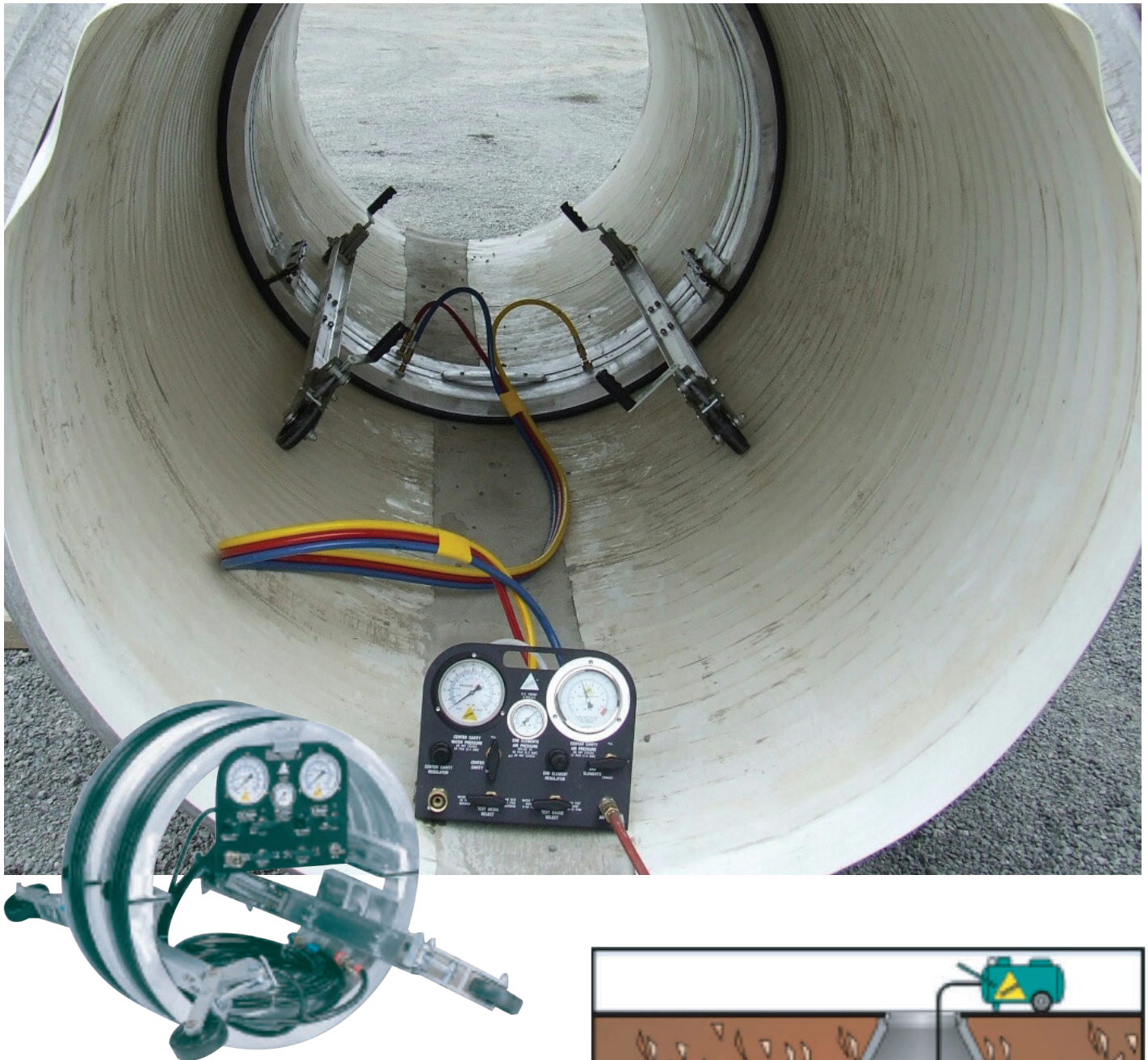


# PIPE JOINT TESTER

17

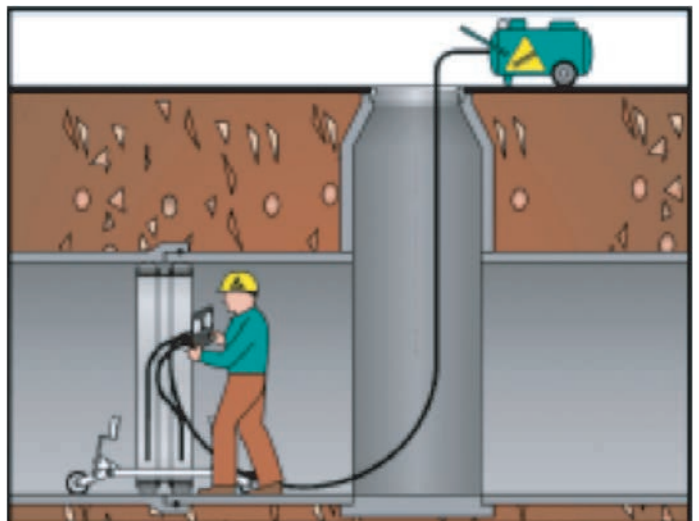
**Fast, safe and easy to use, HTC's Joint Testers are designed to test large-diameter, installed, pre-cast concrete pipe.**

Ready to test with water or air, no modifications needed. The Joint Tester also allows you to pre-test before backfilling.



## FEATURES

- Sleeveless, lightweight aluminum design allows for easy assembly in manholes
- Independent, adjustable wheels—easy to move
- Quick-connect control panel is simple to install and remove, plus the top-mounting feature won't interfere with laser usage





## Pipe Sealing & Testing

### Pipe Joint Tester

#### IMG REF Product Description

- P27** Wide range of pressure capacities and size available. Fit pipe sizes ranging from 24" - 120". Equipped with adjustable wheels that allow for easy transportation through the pipeline.

P27



## Rebar Tools

### Rebar Benders

#### IMG REF Product Description

- P28** Range of table and handheld rebar bending machines

P28



### Rebar Cutters

#### IMG REF Product Description

- P29** Handheld Bender Cutter Combo Tool
- P30** Electric/Hydraulic Rebar Cutters
- P31** Electric Flush Cutter Saw

P29



P30



P31





# Tension Meters

## Dynamometers

IMG  
REF

### Product Description

- T1** Dillon wire tension meters - Up to 20 wire sizes able to be loaded at once
- T2** Analogue tension meters - 500kg to 10t
- T3** Dillon digital tension meters - 5kg to 20t, wireless display units available



# Ventilation Fans

IMG  
REF

### Product Description

- V1** For ventilation of confined spaces.



# Winches

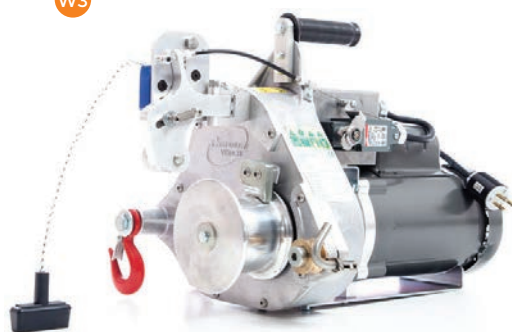
## Portable Winches, Tirfors, Trailer Winches for Lifting and Pulling

IMG REF	Product Description
W1	Wire tirfors - 1250kg, 2500kg and 5000kg models available
W2	Petrol and battery powered capstan winches for pulling - 700kg and 1000kg models
W3	Petrol and electric powered capstan winches for pulling and lifting - multiple models available
W4	Winch accessories - bags, rope, pulleys, hooks, pole mounts and more..
W5	Trailer mounted winches - Multiple sizes with wireless control and accessories available
W6	Tema Dual Capstan feeding and hauling systems.

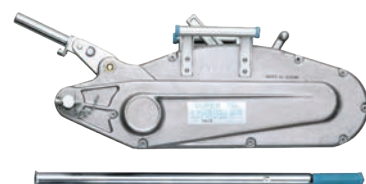
W2



W3



W1



W4



PCA-1255

PCA-1215M



PCA-1282

2x PCA-1276



PCA-1274



PCA-1259

W5



W6







# WE SERVICE WHAT WE SELL

**Let HTC's in-house experts transform your service experience.**

Trained for speed, reliability, and cost-effectiveness, our specialists handle repairs and scheduled maintenance for your hydraulic tools. We've got the basics in stock for most of our products, ensuring you'll be back in action in no time.

Worried about project delays during servicing? Enjoy discounted hire rates when our experts are fine-tuning your gear.

But that's not all—HTC is your one-stop shop for seal kits, hoses, couplers, gauges, hydraulic fluids, coolants, cutters, punches, compression dies, and a wide range of spares and accessories.

And here's the real difference-maker—our specialists don't just fix things. We go beyond, creating custom engineering solutions for your projects.

**HTC: Your project's ally in progress.**







- SALES • HIRE
- CALIBRATION
- SERVICE

#### AUCKLAND

31 Andrew Baxter Drive, Airport Oaks  
T (09) 271 0800



#### CHRISTCHURCH

31 Epsom Road, Sockburn  
T (03) 341 0040

*"Makin' the Hard Jobs Easy"*

T 0800 HTC 000 (0800 48 2000) W [HTC.CO.NZ](http://HTC.CO.NZ)